



Western Michigan University
ScholarWorks at WMU

Legacy Scout Tickets from Pure Oil Company

8-20-2021

MGRRE_PureOilScoutTickets_Sophia_1_21017099050000

MGRRE

Western Michigan University

Follow this and additional works at: <https://scholarworks.wmich.edu/pure>



Part of the Geology Commons

WMU ScholarWorks Citation

MGRRE, "MGRRE_PureOilScoutTickets_Sophia_1_21017099050000" (2021). *Legacy Scout Tickets from Pure Oil Company*. 787.

<https://scholarworks.wmich.edu/pure/787>

This Document is brought to you for free and open access via ScholarWorks at WMU. It has been accepted for inclusion in Legacy Scout Tickets from Pure Oil Company by an authorized administrator of ScholarWorks at WMU. See the National Digital Catalogue - Science Base Catalogue for more collections submitted by MGRRE.



MGRRE_PureOilScoutTickets_Sophia_1_21017099050000

API 21017099050000

Permit Number 9905

Lease Name Sophia

Well Number 1

County Bay

Township 14N

Range 04E

Section 2

2021 DEQ or Pure co_name Muskegon Development Company

Pure Number 129

Latitude 43.6448767

Longitude -83.958303

THE PURE OIL COMPANY

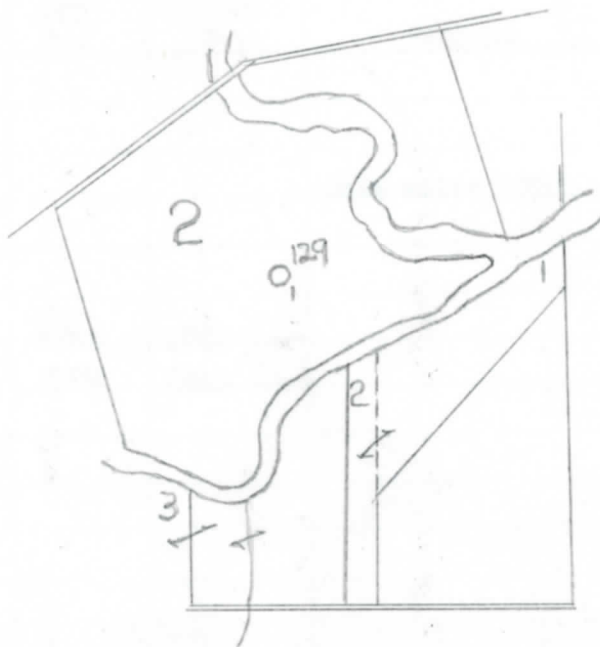
LOCATION REPORT

Date December 2, 1942 A.F.E. No. _____
 Division Michigan Producing District _____ Lease Sophia
 Acres _____ Lease No. _____ Elevation _____ Well No. 1 (Serial No. 129)
 Quadrangle C N $\frac{1}{2}$ NW SE Sec. 2 Twp. 14 N Rge. 4 E Monitor Monitor
 Survey _____ County Bay State Michigan
 Operator Gulf Refining Co. Map Monitor Twp. Bay Co.
Gulf Refining Company

<u>330'</u>	<u>330</u>	Feet from North Line of Lease
<u>660'</u>	<u>660</u>	" " East " " "
		" " South " " "
<u>660'</u>	<u>660</u>	" " West <u>1/4</u> "
<u>330'</u>	<u>330</u>	Feet from North Line of Section
		" " East " " "
		" " South " " "
<u>660'</u>	<u>660</u>	" " West " " <u>1/4</u>

LEGEND

- Location
- ☀ Gas Well
- Oil Well
- ☀- Distillate Well
- or ○ Dry Hole
- Dry Showing Oil
- ☀ Dry Showing Gas
- ⊗ Abandoned Location
- ☀ or ☀ Abandoned Gas Well
- or ● Abandoned Oil Well
- or ○ Input Well



Scale _____

Remarks: _____

Submitted by D _____ Approved by _____
 Civil Engineer Division Manager
 Approved by _____
 Vice-President - General Manager

COMPLETION RECORD OF WELLS DRILLED BY OTHER OPERATORS

Michigan Producing Division

Date **February 24, 1943** No. **129**
 State **Mich.** County **Bay** Dist. ~~Sec.~~ Twp. **Monitor** Sec. **2** Twp. **14 N** Rge. **4 E**
 (Serial No.)
 Well No. **1** (County No.) **129** Farm **Sophia** Acres _____
 Operator **Gulf Refining Company** Information secured from ~~XXX~~ **Scouting Department**
 Date well started **12-16-42** Date well completed **1-31-43** Elevation **595.0**

PRODUCTION RECORD

1st 24 hours natural **Filled up 1000 ft.**
 2nd 24 hours natural _____
 Date of shot _____ No. of quarts _____ From _____ to _____ From _____ to _____
 Date of acid **2-13-43** No. of gallons **750**
 1st 24 hours after acid ~~shot~~ **55 Barrels (Pumped)**
 shot
 2nd 24 hours after acid _____

FORMATION AND CASING RECORD

Formation	Top	Bottom	Top Pay	Bottom Pay	Remarks	Casing	
						Size	Set at
Coldw. Red Rock	1340	1350				10"	72
Sunbury	1466					8-1/4"	785
Berea	1488				Salt water 1590.	6-5/8"	2727
Antrim	1660						
Traverse Line	2005						
Dundee	2708	S.L.M.	2762	2782			
			2792	2843			
Total Depth		2869					

Remarks **2713' CTM equals 2709' SLM.**

Signed **D. C. Shackelford**