



Western Michigan University
ScholarWorks at WMU

Legacy Scout Tickets from Pure Oil Company

8-20-2021

MGRRE_PureOilScoutTickets_Jeske, Michel_1_21017099270000

MGRRE

Western Michigan University

Follow this and additional works at: <https://scholarworks.wmich.edu/pure>



Part of the Geology Commons

WMU ScholarWorks Citation

MGRRE, "MGRRE_PureOilScoutTickets_Jeske, Michel_1_21017099270000" (2021). *Legacy Scout Tickets from Pure Oil Company*. 789.

<https://scholarworks.wmich.edu/pure/789>

This Document is brought to you for free and open access via ScholarWorks at WMU. It has been accepted for inclusion in Legacy Scout Tickets from Pure Oil Company by an authorized administrator of ScholarWorks at WMU. See the National Digital Catalogue - Science Base Catalogue for more collections submitted by MGRRE.



MGRRE_PureOilScoutTickets_Jeske, Michel_1_21017099270000

API 21017099270000

Permit Number 9927

Lease Name Jeske, Michel

Well Number 1

County Bay

Township 15N

Range 04E

Section 27

2021 DEQ or Pure co_name Muskegon Development Company

Pure Number 131

Latitude 43.6682843

Longitude -83.9817466

THE PURE OIL COMPANY

LOCATION REPORT

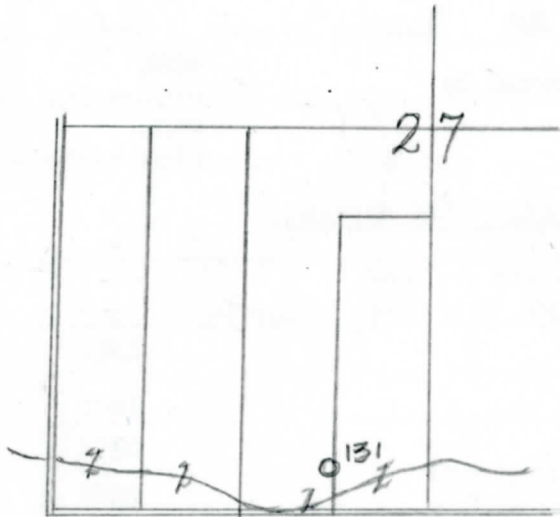
Date 12-23-42 A.F.E. No. _____
 Division Michigan Producing District _____ Lease Michel Jeske
 Acres _____ Lease No. _____ Elevation _____ Well No. 1 (Serial No. 131)
 Quadrange C S 1/2 SE SW Sec. 27 Twp. 15 N Rge. 4 E Twp. Kawkawlin
 Survey _____ County Bay State Michigan
 Operator Gulf Refining Co. Map Kawkawlin Twp - Bay Co.
Gulf Refining Company Kawkawlin Township, Bay County

Feet from North Line of Lease	
<u>660'</u>	<u>660</u> " " East " " "
<u>330'</u>	<u>330</u> " " South " " "
<u>660'</u>	<u>660</u> " " West " " "
Feet from North Line of Section	
<u>660'</u>	<u>660</u> " " East <u>1/4</u> " "
<u>330'</u>	<u>330</u> " " South " " "
	" " West " " "

Lo

LEGEND

- Location
- ☀ Gas Well
- Oil Well
- ☀ Gas - Distillate Well
- ∅ or ○ Dry Hole
- Dry Showing Oil
- ☀ Dry Showing Gas
- ⊗ Abandoned Location
- ☀ or ☀ Abandoned Gas Well
- or ● Abandoned Oil Well
- or ○ Input Well



Scale _____

Remarks: _____

Submitted by N Civil Engineer Approved by _____ Division Manager
 Approved by _____ Vice-President - General Manager

