



Western Michigan University  
ScholarWorks at WMU

---

Legacy Scout Tickets from Pure Oil Company

---

8-20-2021

**MGRRE\_PureOilScoutTickets\_Siegrist, Karl\_1\_21017099690000**

MGRRE

*Western Michigan University*

Follow this and additional works at: <https://scholarworks.wmich.edu/pure>



Part of the Geology Commons

---

#### **WMU ScholarWorks Citation**

MGRRE, "MGRRE\_PureOilScoutTickets\_Siegrist, Karl\_1\_21017099690000" (2021). *Legacy Scout Tickets from Pure Oil Company*. 793.

<https://scholarworks.wmich.edu/pure/793>

This Document is brought to you for free and open access via ScholarWorks at WMU. It has been accepted for inclusion in Legacy Scout Tickets from Pure Oil Company by an authorized administrator of ScholarWorks at WMU. See the National Digital Catalogue - Science Base Catalogue for more collections submitted by MGRRE.



---

**MGRRE\_PureOilScoutTickets\_Siegrist, Karl\_1\_21017099690000**

API 21017099690000

Permit Number 9969

Lease Name Siegrist, Karl

Well Number 1

County Bay

Township 15N

Range 04E

Section 33

2021 DEQ or Pure co\_name Muskegon Development Company

Pure Number 135

Latitude 43.6665072

Longitude -83.9965604

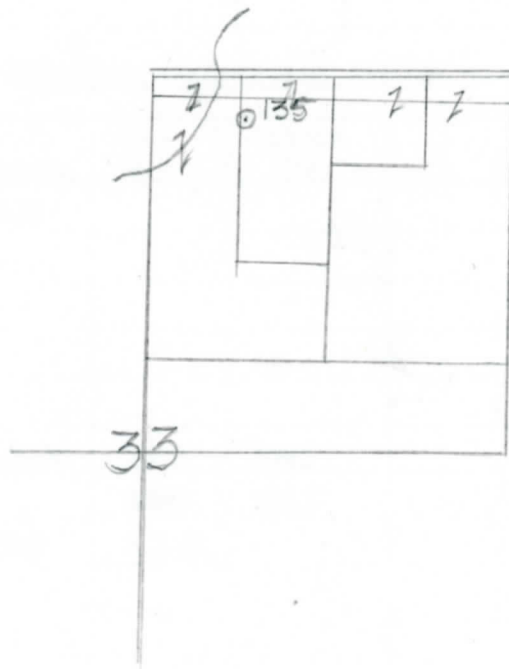
# THE PURE OIL COMPANY LOCATION REPORT

Date February 3, 1943 A.F.E. No. \_\_\_\_\_  
 Division Michigan Producing District \_\_\_\_\_ Lease Karl Siegrist  
 Acres \_\_\_\_\_ Lease No. \_\_\_\_\_ Elevation \_\_\_\_\_ Well No. 1 (Serial No. 135)  
 Quadrangle C N<sup>1</sup>/<sub>2</sub> NW - NE Sec. 33 Twp. 15 N Rge. 4 E ~~Bay~~ Kaw Kawlin  
C N<sup>1</sup>/<sub>2</sub> NW NE Sec. 33 Twp. 15 N Rge. 4 E Twp. Kaw Kawlin  
 Survey \_\_\_\_\_ County Bay State Michigan  
 Operator Gulf Ref. Co. Map Kaw Kawlin Twp - Bay Co.  
Gulf Refining Company Kaw Kawlin Township, Bay County

<u>330</u>	<u>330</u>	Feet from North Line of Lease
<u>660</u>	<u>660</u>	" " East " " "
		" " South " " "
<u>660</u>	<u>660</u>	" " West " " "
<u>330</u>	<u>330</u>	Feet from North Line of Section
		" " East " " "
		" " South " " "
<u>660</u>	<u>660</u>	" " West " " "

**LEGEND**

- Location
- ☀ Gas Well
- Oil Well
- ☀ Gas - Distillate Well
- ⊘ or ○ Dry Hole
- Dry Showing Oil
- ☀ Dry Showing Gas
- ⊘ Abandoned Location
- ☀ or ☀ Abandoned Gas Well
- or ● Abandoned Oil Well
- ⊘ or ⊘ Input Well



Scale \_\_\_\_\_

Remarks: \_\_\_\_\_

Submitted by N \_\_\_\_\_ Approved by \_\_\_\_\_  
 Civil Engineer Division Manager

Approved by \_\_\_\_\_  
 Vice-President - General Manager

THE PURE OIL COMPANY

COMPLETION RECORD OF WELLS DRILLED BY OTHER OPERATORS

Michigan Producing Division

Date April 14, 1943 No. 135
State Mich. County Bay Twp. Kawkawlin Sec. 33 Twp. 15 N Rge. 4 E
Well No. 1 (Serial No.) 135 Farm Karl Siegrist Acres
Operator Gulf Refining Company Information secured By Scouting Department
Date well started 2-8-43 Date well completed 3-14-43 Elevation 601.8

PRODUCTION RECORD

1st 24 hours natural Filled up 2100 ft.
2nd 24 hours natural
Date of shot No. of quarts From to From to
Date of acid 4-6-43 No. of gallons 500
1st 24 hours after acid shot 90 Barrels (Pumped)
2nd 24 hours after acid

FORMATION AND CASING RECORD

Table with 7 columns: Formation, Top, Bottom, Top Pay, Bottom Pay, Remarks, Casing (Size, Set at). Rows include Red Rock, Sunbury, Berea, Antrim, Traverse Lime, Dundee, and Total Depth.

Remarks 2940' CTM equals 2943' SLM.

Signed D. C. Shackelford