



Western Michigan University  
ScholarWorks at WMU

---

Legacy Scout Tickets from Pure Oil Company

---

8-20-2021

**MGRRE\_PureOilScoutTickets\_Goulet,  
Virginne\_1\_21017099700000**

MGRRE  
*Western Michigan University*

Follow this and additional works at: <https://scholarworks.wmich.edu/pure>



Part of the Geology Commons

---

#### **WMU ScholarWorks Citation**

MGRRE, "MGRRE\_PureOilScoutTickets\_Goulet, Virginne\_1\_21017099700000" (2021). *Legacy Scout Tickets from Pure Oil Company*. 794.  
<https://scholarworks.wmich.edu/pure/794>

This Document is brought to you for free and open access via ScholarWorks at WMU. It has been accepted for inclusion in Legacy Scout Tickets from Pure Oil Company by an authorized administrator of ScholarWorks at WMU. See the National Digital Catalogue - Science Base Catalogue for more collections submitted by MGRRE.



---

**MGRRE\_PureOilScoutTickets\_Goulet, Virginne\_1\_21017099700000**

API 21017099700000

Permit Number 9970

Lease Name Goulet, Virginne

Well Number 1

County Bay

Township 15N

Range 04E

Section 33

2021 DEQ or Pure co\_name Muskegon Development Company

Pure Number 136

Latitude 43.66479

Longitude -84.00158

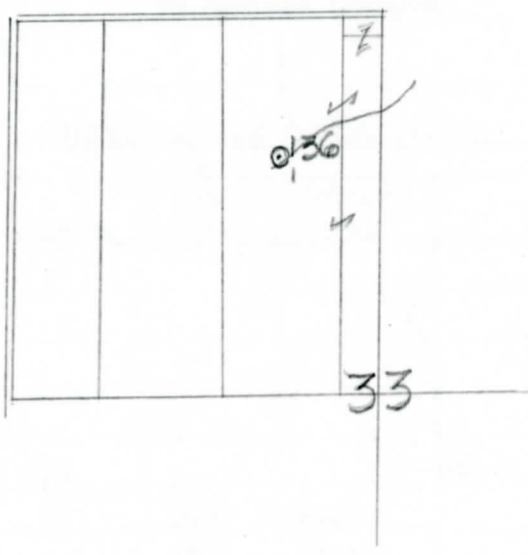
# THE PURE OIL COMPANY LOCATION REPORT

Date February 3, 1943 A.F.E. No. Virginne Goulet  
 Division Michigan Producing District \_\_\_\_\_ Lease Virginne Goulet  
 Acres \_\_\_\_\_ Lease No. \_\_\_\_\_ Elevation \_\_\_\_\_ Well No. 1 (Serial No. 136)  
 Quadrangle C S 1/2 NE NW Sec. 33 Twp. 15 N Rge. 4 E ~~XBIBX~~ ~~XBIBX~~ Kawkawlin  
 Survey \_\_\_\_\_ County Bay State Michigan  
 Operator Gulf Refining Company Map Kawkawlin Twp - Bay Co.  
Kawkawlin Township, Bay County

		Feet from North Line of Lease				
<u>660</u>	<u>660</u>	"	"	East	"	"
<u>330</u>	<u>330</u>	"	"	South	"	"
<u>660</u>	<u>660</u>	"	"	West	"	"
		Feet from North Line of Section				
<u>990</u>	<u>990</u>	"	"	East	"	"
<u>660</u>	<u>660</u>	"	"	South	"	"
		"	"	West	"	"

**LEGEND**

- Gas Well
- Oil Well
- Gas - Distillate Well
- Dry Hole
- Dry Showing Oil
- Location
- Dry Showing Gas
- Abandoned Location
- Abandoned Gas Well
- Abandoned Oil Well
- Input Well



Scale \_\_\_\_\_

Remarks: \_\_\_\_\_

Submitted by      Civil Engineer

Approved by \_\_\_\_\_ Division Manager

Approved by \_\_\_\_\_ Vice-President - General Manager

COMPLETION RECORD OF WELLS DRILLED BY OTHER OPERATORS

Michigan Producing Division

Date August 11, 1943 No. 136  
 State Mich. County Bay District Kawkawlin Twp. 15 N Rge. 4 E  
 Well No. 1 (Serial No.) 136 Farm Virginie Coulet Acres \_\_\_\_\_  
 Operator Gulf Refining Company Information secured ~~from~~ Scouting Department  
 Date well started 2-16-43 Date well completed 7-28-43 Elevation 603.3

PRODUCTION RECORD

1st 24 hours natural Filled up 500 ft.  
 2nd 24 hours natural \_\_\_\_\_  
 Date of shot \_\_\_\_\_ No. of quarts \_\_\_\_\_ From \_\_\_\_\_ to \_\_\_\_\_  
 Date of acid 8-7-43 No. of gallons 500  
 1st 24 hours after acid 70 Barrels (Pumped)  
 2nd 24 hours after acid \_\_\_\_\_

FORMATION AND CASING RECORD

Formation	Top	Bottom	Top Pay	Bottom Pay	Remarks	Casing	
						Size	Set at
Marshall	400					10"	87
Sunbury	1580					8-1/4"	817
Berea	1605					5-3/16"	2828
Antrim	1780						
Traverse Lime	2125	SLM			Oil & Gas 2125-2128	SLM.	
Dundee	2810	"	2880	2898			
			2912	2939 1/2			
Total Depth		2940					

Remarks Traverse treated 4-3-43 with 500 gals. acid and on 4-11-43 with 1000 gals. acid-  
produced approximately 925 bbls. oil before and after acid treatment - upon deepening hole  
was lost-rig skidded-no oil shows in Traverse in second hole.  
2140' CTM equals 2128' SLM.

Signed D. C. Shackelford