



Western Michigan University  
ScholarWorks at WMU

---

Legacy Scout Tickets from Pure Oil Company

---

8-20-2021

**MGRRE\_PureOilScoutTickets\_Bedell\_1\_21017099910000**

MGRRE

*Western Michigan University*

Follow this and additional works at: <https://scholarworks.wmich.edu/pure>



Part of the Geology Commons

---

#### **WMU ScholarWorks Citation**

MGRRE, "MGRRE\_PureOilScoutTickets\_Bedell\_1\_21017099910000" (2021). *Legacy Scout Tickets from Pure Oil Company*. 797.

<https://scholarworks.wmich.edu/pure/797>

This Document is brought to you for free and open access via ScholarWorks at WMU. It has been accepted for inclusion in Legacy Scout Tickets from Pure Oil Company by an authorized administrator of ScholarWorks at WMU. See the National Digital Catalogue - Science Base Catalogue for more collections submitted by MGRRE.



---

**MGRRE\_PureOilScoutTickets\_Bedell\_1\_21017099910000**

API 21017099910000

Permit Number 9991

Lease Name Bedell

Well Number 1

County Bay

Township 15N

Range 04E

Section 33

2021 DEQ or Pure co\_name Muskegon Development Company

Pure Number 139

Latitude 43.6646517

Longitude -83.9916309

THE PURE OIL COMPANY  
LOCATION REPORT

A.F.E. No. \_\_\_\_\_

Date Feb. 24, 1943

Division Mich. Producing District \_\_\_\_\_ Lease Bedell

Acres \_\_\_\_\_ Lease No. \_\_\_\_\_ Elevation \_\_\_\_\_ Well No. 1 (Serial No. 139)

Quadrangle C S<sub>2</sub> NE NE Sec. 33 Twp. 15 N Rge. 4 E Twp. Kawkawlin

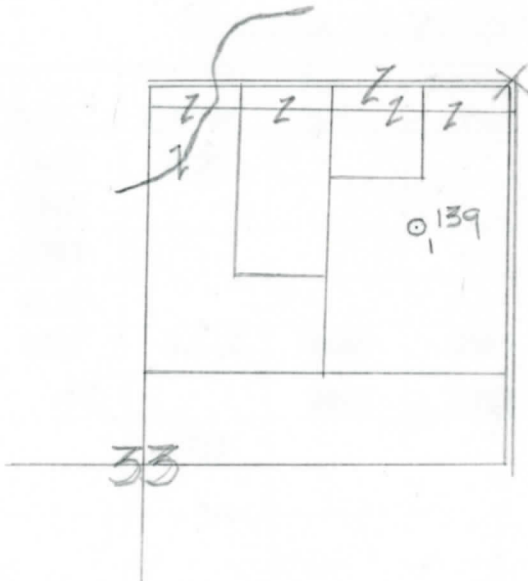
Survey \_\_\_\_\_ County Bay State Michigan

Operator Gulf Refining Company Map Kawkawlin Twp - Bay Co.

_____	_____	Feet from North Line of Lease
<u>660</u>	<u>660</u>	" " East " " "
<u>330</u>	<u>330</u>	" " South " " "
<u>660</u>	<u>660</u>	" " West " " <u>1/4</u>
<u>990</u>	<u>990</u>	Feet from North Line of Section
<u>660</u>	<u>660</u>	" " East " " "
_____	_____	" " South " " "
_____	_____	" " West " " "

LEGEND

- ☉ Gas Well
- Oil Well
- ☉ or ☉ Gas - Distillate Well
- or ○ Dry Hole
- Dry Showing Oil
- Location
- ☉ Dry Showing Gas
- ⊗ Abandoned Location
- ☉ or ☉ Abandoned Gas Well
- or ● Abandoned Oil Well
- or ○ Input Well



Scale \_\_\_\_\_

Remarks: \_\_\_\_\_

Submitted by N \_\_\_\_\_ Approved by \_\_\_\_\_  
Civil Engineer Division Manager

Approved by \_\_\_\_\_  
Vice-President - General Manager

Date June 30, 1943 No. 139  
 State Mich. County Bay District Bedell Twp. Kawkawlin Sec. 33 Twp. 15 N Rge. 4 E  
 Well No. 1 (Serial No.) 139 Farm Bedell Acres \_\_\_\_\_  
 Operator Gulf Refining Company Information secured By Scouting Department  
 Date well started 2-26-43 Date well completed 3-30-43 Elevation 603.9

PRODUCTION RECORD

1st 24 hours natural Filled up 1500 ft.  
 2nd 24 hours natural \_\_\_\_\_  
 Date of shot \_\_\_\_\_ No. of quarts \_\_\_\_\_ From \_\_\_\_\_ to \_\_\_\_\_ From \_\_\_\_\_ to \_\_\_\_\_  
 Date of acid 6-22-43 No. of gallons 500  
 1st 24 hours after acid 85 Barrels (Pumped)  
 shot \_\_\_\_\_  
 2nd 24 hours after acid \_\_\_\_\_

FORMATION AND CASING RECORD

Formation	Top	Bottom	Top Pay	Bottom Pay	Remarks	Casing	
						Size	Set at
Red Rock	1465	1470				10"	116
Berea	1615					8-1/4"	775
Antrim	1787					5-3/16"	2809
Traverse Lime	2137						
Dundee	2788	S.L.M.	2860	2885			
			2892	2935			
Total Depth		2935					

Remarks \_\_\_\_\_  
 \_\_\_\_\_  
 \_\_\_\_\_  
 \_\_\_\_\_

Signed D. C. Shackelford