



Western Michigan University
ScholarWorks at WMU

Legacy Scout Tickets from Pure Oil Company

8-20-2021

MGRRE_PureOilScoutTickets_Nitschke, L_1_21017100270000

MGRRE

Western Michigan University

Follow this and additional works at: <https://scholarworks.wmich.edu/pure>



Part of the Geology Commons

WMU ScholarWorks Citation

MGRRE, "MGRRE_PureOilScoutTickets_Nitschke, L_1_21017100270000" (2021). *Legacy Scout Tickets from Pure Oil Company*. 800.

<https://scholarworks.wmich.edu/pure/800>

This Document is brought to you for free and open access via ScholarWorks at WMU. It has been accepted for inclusion in Legacy Scout Tickets from Pure Oil Company by an authorized administrator of ScholarWorks at WMU. See the National Digital Catalogue - Science Base Catalogue for more collections submitted by MGRRE.



MGRRE_PureOilScoutTickets_Nitschke, L_1_21017100270000

API 21017100270000

Permit Number 10027

Lease Name Nitschke, L

Well Number 1

County Bay

Township 15N

Range 04E

Section 27

2021 DEQ or Pure co_name Muskegon Development Company

Pure Number 142

Latitude 43.6699629

Longitude -83.9864984

THE PURE OIL COMPANY
LOCATION REPORT

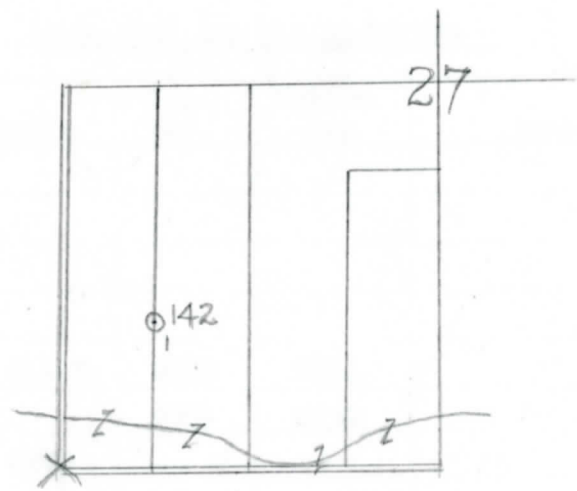
Date March 24, 1943 A.F.E. No. _____
 Division Mich. Producing District _____ Lease L. Nietschke
 Acres _____ Lease No. _____ Elevation _____ Well No. 1 (Serial No. 142)
 Quadrangle C N 1/2 SW SW Sec. 27 Twp. 15 N Rge. 4 E Twp. Kawkawlin
 Survey _____ County Bay State Michigan
 Operator Gulf Refining Co Map Kawkawlin Twp - Bay Co.

<u>330</u>	<u>330</u>	Feet from North Line of Lease
<u>660</u>	<u>660</u>	" " East " " "
		" " South " " "
<u>660</u>	<u>660</u>	" " West " " "
		Feet from North Line of Section
<u>990</u>	<u>990</u>	" " East " " "
<u>660</u>	<u>660</u>	" " South " <u>2/4</u>
		" " West " " "

Loop

LEGEND

- Location
- ☀ Gas Well
- Oil Well
- ☀ Gas - Distillate Well
- ⊘ or ○ Dry Hole
- Dry Showing Oil
- ☀ Dry Showing Gas
- ⊘ Abandoned Location
- ☀ or ☀ Abandoned Gas Well
- or ● Abandoned Oil Well
- or ○ Input Well



Scale _____

Remarks: _____

Submitted by PN Civil Engineer Approved by _____ Division Manager
 Approved by _____ Vice-President - General Manager

Michigan Producing Division

Date June 23, 1943 No. 142
 State Mich. County Bay Dist. Kawkawlin Twp. 15 N Sec. 27 Rge. 4 E
 Well No. 1 (Serial No.) 142 Farm L. Nitschke Acres _____
 Operator Gulf Refining Company Information secured from Scouting Department
 Date well started 3-29-43 Date well completed 4-30-43 Elevation 602.6

PRODUCTION RECORD

1st 24 hours natural Filled up 150 ft.
 2nd 24 hours natural _____
 Date of shot _____ No. of quarts _____ From _____ to _____ From _____ to _____
 Date of acid 6-15-43 No. of gallons 500
 1st 24 hours after acid 15 Barrels (Pumped)
 2nd 24 hours after acid _____

FORMATION AND CASING RECORD

Formation	Top	Bottom	Top Pay	Bottom Pay	Remarks	Casing	
						Size	Set at
Sunbury	1550					10"	119
Berea	1575					8-1/4"	754
Antrim	1750					6-5/8"	2821
Traverse Lime	2112						
Dundee	2800	S.L.M.	2870	2894			
			2905	2938			
Total Depth		2938					

Remarks _____

Signed D. C. Shackelford