



Western Michigan University
ScholarWorks at WMU

Legacy Scout Tickets from Pure Oil Company

8-20-2021

MGRRE_PureOilScoutTickets_Sivier, Alfred H & Pauline M_1_21017101760000

MGRRE

Western Michigan University

Follow this and additional works at: <https://scholarworks.wmich.edu/pure>



Part of the Geology Commons

WMU ScholarWorks Citation

MGRRE, "MGRRE_PureOilScoutTickets_Sivier, Alfred H & Pauline M_1_21017101760000" (2021). *Legacy Scout Tickets from Pure Oil Company*. 807.
<https://scholarworks.wmich.edu/pure/807>

This Document is brought to you for free and open access via ScholarWorks at WMU. It has been accepted for inclusion in Legacy Scout Tickets from Pure Oil Company by an authorized administrator of ScholarWorks at WMU. See the National Digital Catalogue - Science Base Catalogue for more collections submitted by MGRRE.



MGRRE_PureOilScoutTickets_Sivier, Alfred H & Pauline M_1_21017101760000

API 21017101760000

Permit Number 10176

Lease Name Sivier, Alfred H & Pauline M

Well Number 1

County Bay

Township 18N

Range 03E

Section 1

2021 DEQ or Pure co_name Major, Ervin

Pure Number 149

Latitude 43.99221

Longitude -84.0529

THE PURE OIL COMPANY

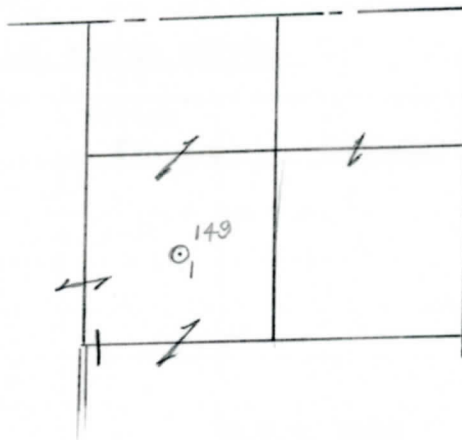
LOCATION REPORT

Date June 23, 1943 A.F.E. No. _____
 Division Michigan Producing District _____ Lease Alfred H. & Pauline M. Sivier
 Acres _____ Lease No. _____ Elevation _____ Well No. 1 (Serial No. 149)
 Quadrangle C SW NE Sec. 1 Twp. 18 N Rge. 3 E Twp. Gibson
 Survey _____ County Bay State Michigan
 Operator Ervin Major Map Gibson Twp - Bay Co.
Gibson Township, Bay County

Feet from North Line of Lease	
660	660
660	660
Feet from North Line of Section	
660	660
660	660

LEGEND

- Location
- ☀ Gas Well
- ☀ Dry Showing Gas
- Oil Well
- ☀ Abandoned Location
- ☀ Gas - Distillate Well
- ☀ or ☀ Abandoned Gas Well
- or ○ Dry Hole
- or ● Abandoned Oil Well
- Dry Showing Oil
- or ○ Input Well



Remarks: _____

Scale _____

Submitted by _____ Civil Engineer Approved by _____ Division Manager
 Approved by _____ Vice-President - General Manager

COMPLETION RECORD OF WELLS DRILLED BY OTHER OPERATORS

Michigan Producing Division

T

Date August 4, 1943 No. 149
 State Mich. County Bay Twp. Gibson Sec. 1 Twp. 18 N Rge. 3 E
 (Serial No.)
 Well No. 1 (6-24-43) Farm A. H. & P. M. Siver Acres _____
 Operator Ervin Major By _____ Information secured ~~from~~ Scouting Department
 Date well started 6-24-43 Date well completed 7-28-43 Elevation 686.0

PRODUCTION RECORD

Dry Hole
 1st 24 hours natural _____
 2nd 24 hours natural _____
 Date of shot _____ No. of quarts _____ From _____ to _____ From _____ to _____
 Date of acid _____ No. of gallons _____
 1st 24 hours after acid shot _____
 2nd 24 hours after acid shot _____

FORMATION AND CASING RECORD

Formation	Top	Bottom	Top Pay	Bottom Pay	Remarks	Casing	
						Size	Set at
Marshall	254					10"	65
Red Rock	1335	1340				8-1/4"	525
Sunbury	1437					6-5/8"	2180
Berea	1478					5-3/16"	2850 -
Antrim	1620					Liner	2115
Traverse Lime	2000				H.F.W. 2010		
Dundee	2794	C.T.M.			Show oil and gas 2894-2904 SLM.		
					Water 2961-2969.		
Total Depth		2973					

Remarks 2930' CTM equals 2924' SLM.

Signed D. C. Shackelford