



Legacy Scout Tickets from Pure Oil Company

8-20-2021

**MGRRE_PureOilScoutTickets_Clement,
Edward_1_21017102020000**

MGRRE
Western Michigan University

Follow this and additional works at: <https://scholarworks.wmich.edu/pure>



Part of the Geology Commons

WMU ScholarWorks Citation

MGRRE, "MGRRE_PureOilScoutTickets_Clement, Edward_1_21017102020000" (2021). *Legacy Scout Tickets from Pure Oil Company*. 809.
<https://scholarworks.wmich.edu/pure/809>

This Document is brought to you for free and open access via ScholarWorks at WMU. It has been accepted for inclusion in Legacy Scout Tickets from Pure Oil Company by an authorized administrator of ScholarWorks at WMU. See the National Digital Catalogue - Science Base Catalogue for more collections submitted by MGRRE.



MGRRE_PureOilScoutTickets_Clement, Edward_1_21017102020000

API 21017102020000

Permit Number 10202

Lease Name Clement, Edward

Well Number 1

County Bay

Township 14N

Range 04E

Section 12

2021 DEQ or Pure co_name Muskegon Development Company

Pure Number 151

Latitude 43.6375287

Longitude -83.9382649

THE PURE OIL COMPANY LOCATION REPORT

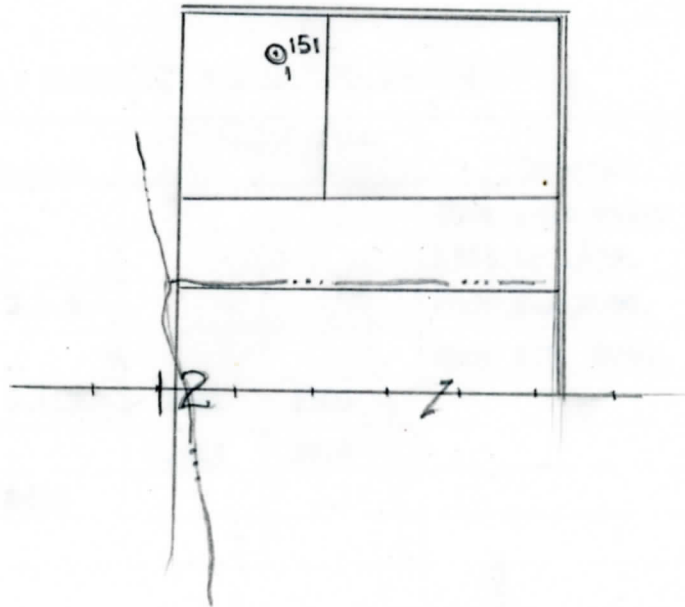
Date July 8, 1943 A.F.E. No. _____
 Division Mich. Producing District _____ Lease Edward Clement
 Acres _____ Lease No. _____ Elevation _____ Well No. 1 (Serial No. 151)
 Quadrangle C N $\frac{1}{2}$ NW NE Sec. 12 Twp. 14 N Rge. 4 E Twp. Monitor
 Survey _____ County Bay State Michigan
 Operator Gulf Refining Co. Map Monitor Twp., Bay Co.

330' 330 Feet from North Line of Lease
660' 660 " " East " " "
 " " South " " "
660' 660 " " West " " "
330' 330 Feet from North Line of Section
 " " East " " "
 " " South " " "
660' 660 " " West " " "

Leo

LEGEND

- Location
- ☀ Gas Well
- Oil Well
- ☀ Gas - Distillate Well
- or ○ Dry Hole
- Dry Showing Oil
- ☀ Dry Showing Gas
- ⊗ Abandoned Location
- ☀ or ☀ Abandoned Gas Well
- or ● Abandoned Oil Well
- or ○ Input Well



Scale _____

Remarks: _____

Submitted by RN Civil Engineer Approved by _____ Division Manager
 Approved by _____ Vice-President - General Manager

COMPLETION RECORD OF WELLS DRILLED BY OTHER OPERATORS

Michigan Producing Division

Date September 9, 1943 No. 151
 State Mich. County Bay District Monitor Twp. 12 Sec. 12 Twp. 14 N Rge. 4 E
 Well No. 1 (Serial No.) 151 Farm Edward Clement Acres _____
 Operator Gulf Refining Company Information secured ~~from~~ Scouting Department By _____
 Date well started 7-19-43 Date well completed 8-29-43 Elevation 590.3

PRODUCTION RECORD

1st 24 hours natural Filled up 100 ft.
 2nd 24 hours natural _____
 Date of shot _____ No. of quarts _____ From _____ to _____ From _____ to _____
 Date of acid 9-3-43 No. of gallons 500
 1st 24 hours after acid ~~500~~ 24 Barrels (Pumped)
 shot
 2nd 24 hours after acid _____

FORMATION AND CASING RECORD

Formation	Top	Bottom	Top Pay	Bottom Pay	Remarks	Casing	
						Size	Set at
Berea	1509				Show salt water 1585 to 1592.	10"	94
Traverse Lime	2035	S.L.M.			Show gas 2060. Show S.W. 2061.	8-1/4"	755
Dundee	2719	S.L.M.	2781	2806			
			2815	2868			
Total Depth		2868					

Remarks 1507' CTM equals 1509' SLM.

Signed D. C. Shackelford