



Western Michigan University
ScholarWorks at WMU

Legacy Scout Tickets from Pure Oil Company

8-20-2021

**MGRRE_PureOilScoutTickets_Bedell, Simon M & Martha
L_1_21017103000000**

MGRRE
Western Michigan University

Follow this and additional works at: <https://scholarworks.wmich.edu/pure>



Part of the Geology Commons

WMU ScholarWorks Citation

MGRRE, "MGRRE_PureOilScoutTickets_Bedell, Simon M & Martha L_1_21017103000000" (2021). *Legacy Scout Tickets from Pure Oil Company*. 813.
<https://scholarworks.wmich.edu/pure/813>

This Document is brought to you for free and open access via ScholarWorks at WMU. It has been accepted for inclusion in Legacy Scout Tickets from Pure Oil Company by an authorized administrator of ScholarWorks at WMU. See the National Digital Catalogue - Science Base Catalogue for more collections submitted by MGRRE.



MGRRE_PureOilScoutTickets_Bedell, Simon M & Martha L_1_21017103000000

API 21017103000000

Permit Number 10300

Lease Name Bedell, Simon M & Martha L

Well Number 1

County Bay

Township 15N

Range 04E

Section 32

2021 DEQ or Pure co_name Major, Ervin

Pure Number 155

Latitude 43.65404

Longitude -84.01162

THE PURE OIL COMPANY LOCATION REPORT

A.F.E. No. _____

Simon M. & Martha J. Bedell

Lease Simon M. & Martha J. Bedell

Date August 18, 1943

Division Michigan Producing District _____

Acres _____ Lease No. _____ Elevation _____ Well No. 1 (Serial No. 155)

Quadrangle C S 1/2 SE SE Sec. 32 Twp. 15 N Rge. 4 E Twp. Kawkawlin

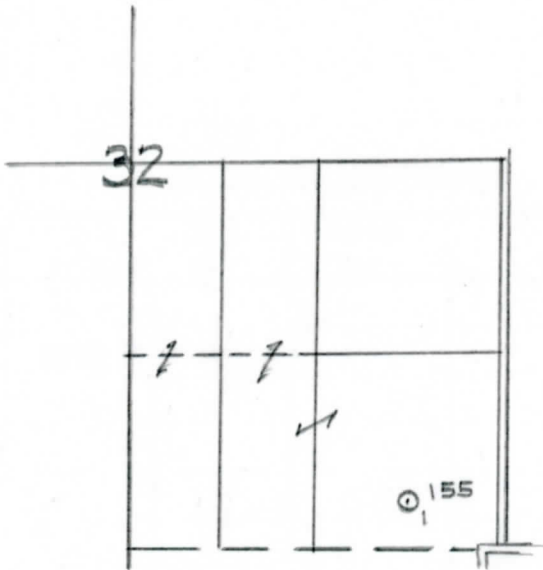
Survey _____ County Bay State Michigan

Operator Ervin Major Map Kawkawlin Township, Bay County

| | | | | | |
|------------|------------|---------------------------------|---|-------|----------------|
| | | Feet from North Line of Lease | | | |
| <u>660</u> | <u>660</u> | " | " | East | " " " |
| <u>330</u> | <u>330</u> | " | " | South | " " " |
| | | " | " | West | " " " |
| | | Feet from North Line of Section | | | |
| <u>660</u> | <u>660</u> | " | " | East | " <u>1/4</u> " |
| <u>330</u> | <u>330</u> | " | " | South | " " " |
| | | " | " | West | " " " |

LEGEND

- Location
- ☀ Gas Well
- Oil Well
- ☀ Gas - Distillate Well
- or ○ Dry Hole
- Dry Showing Oil
- ☀ or ☀ Dry Showing Gas
- ⊗ Abandoned Location
- ☀ or ☀ Abandoned Gas Well
- or ● Abandoned Oil Well
- or ○ Input Well



Scale _____

Remarks: _____

Submitted by RN Civil Engineer Approved by _____ Division Manager
 Approved by _____ Vice-President - General Manager

THE LOPE OIL COMPANY
 COMPLETION RECORD OF WELLS DRILLED BY OTHER OPERATORS

Michigan Producing Division

Date January 12, 1944 No. 155
 State Mich. County Bay ~~Dixie~~ Twp. Kawkawlin Sec. 32 Twp. 15 N Rge. 4 E
 Well No. 1 (~~100000000~~) 155 Farm S. M. & M. J. Bedell Acres
 Operator Ervin Major Information secured ~~from~~ By Scouting Department
 Date well started 8-18-43 Date well completed 9-13-43 Elevation 604.8

PRODUCTION BOARD

1st 24 hours natural Dry Hole
 2nd 24 hours natural
 Date of shot No. of quarts From to From to
 Date of acid No. of gallons
 shot
 1st 24 hours after acid
 shot
 2nd 24 hours after acid

FORMATION AND CASING RECORD

| Formation | Top | Bottom | Top Pay | Bottom Pay | Remarks | Casing | |
|-------------|-----|--------|---------|------------|---------|--------|--------|
| | | | | | | Size | Set at |
| Marshall | 693 | | | | | 10" | 134 |
| Total Depth | | 1712 | | | | 8-1/4" | 845 |
| | | | | | | | |
| | | | | | | | |
| | | | | | | | |
| | | | | | | | |
| | | | | | | | |
| | | | | | | | |
| | | | | | | | |
| | | | | | | | |
| | | | | | | | |

Remarks

Signed D. C. Shackelford