



Legacy Scout Tickets from Pure Oil Company

---

8-20-2021

**MGRRE\_PureOilScoutTickets\_Ammann,  
Ernest\_2\_21017103420000**

MGRRE

*Western Michigan University*

Follow this and additional works at: <https://scholarworks.wmich.edu/pure>



Part of the Geology Commons

---

#### **WMU ScholarWorks Citation**

MGRRE, "MGRRE\_PureOilScoutTickets\_Ammann, Ernest\_2\_21017103420000" (2021). *Legacy Scout Tickets from Pure Oil Company*. 815.

<https://scholarworks.wmich.edu/pure/815>

This Document is brought to you for free and open access via ScholarWorks at WMU. It has been accepted for inclusion in Legacy Scout Tickets from Pure Oil Company by an authorized administrator of ScholarWorks at WMU. See the National Digital Catalogue - Science Base Catalogue for more collections submitted by MGRRE.



---

**MGRRE\_PureOilScoutTickets\_Ammann, Ernest\_2\_21017103420000**

API 21017103420000

Permit Number 10342

Lease Name Ammann, Ernest

Well Number 2

County Bay

Township 15N

Range 04E

Section 26

2021 DEQ or Pure co\_name Muskegon Development Company

Pure Number 157

Latitude 43.66834

Longitude -83.96257

THE PURE OIL COMPANY

LOCATION REPORT

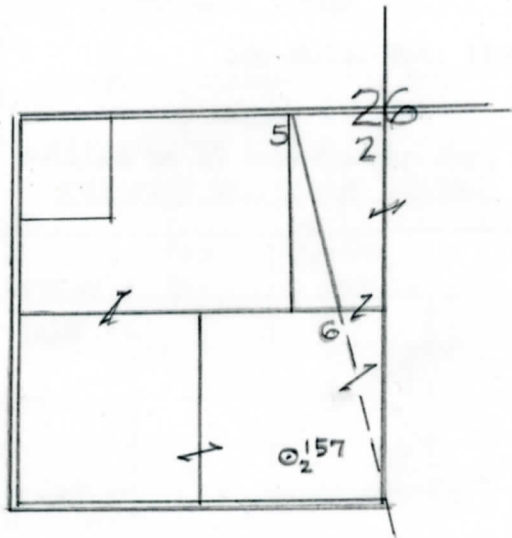
Date September 9, 1943 A.F.E. No. \_\_\_\_\_  
 Division Mich. Producing District \_\_\_\_\_ Lease Ernest Ammann  
 Acres \_\_\_\_\_ Lease No. \_\_\_\_\_ Elevation \_\_\_\_\_ Well No. 2 (Serial No. 157)  
 Quadrangle C 3 1/2 SE SW Sec. 26 Twp. 15 N Rge. 4 E ~~Bay~~ Kawkawlin  
 Survey \_\_\_\_\_ County Bay State Michigan  
 Operator C. W. Jones & Elmer G. Steuermann, Agents Map Kawkawlin Township, Bay County

Feet from North Line of Lease  
660 660 " " East " " "  
330 330 " " South " " "  
 " " West " " "  
 Feet from North Line of Section  
660 660 " " East " 1/4 "  
330 330 " " South " " "  
 " " West " " "

*Loe*

LEGEND

- Location
- ☀ Gas Well
- Oil Well
- ☀ Gas - Distillate Well
- or ○ Dry Hole
- Dry Showing Oil
- ☀ Dry Showing Gas
- ⊖ Abandoned Location
- ☀ or ☀ Abandoned Gas Well
- or ● Abandoned Oil Well
- ⊖ or ⊖ Input Well



Scale \_\_\_\_\_

Remarks: \_\_\_\_\_

Submitted by RN \_\_\_\_\_ Approved by \_\_\_\_\_  
 Civil Engineer Division Manager

Approved by \_\_\_\_\_  
 Vice-President - General Manager

**Michigan Producing** Division

Date December 22, 1943 No. 157  
 State Mich. County Bay Twp. Kawkawlin Sec. 26 Twp. 15 N Rge. 4 E  
 Well No. 2 (~~157~~) 157 Farm Ernest Ammann Acres \_\_\_\_\_  
 Operator C. W. Jones-E. G. Steuernol, Information secured ~~from~~ Scouting Department  
 Agts. By \_\_\_\_\_  
 Date well started 10-9-43 Date well completed 11-24-43 Elevation 595.7

PRODUCTION RECORD

12  
 1st ~~24~~ hours natural Filled up 1200 ft.  
 2nd 24 hours natural \_\_\_\_\_  
 Date of shot \_\_\_\_\_ No. of quarts \_\_\_\_\_ From \_\_\_\_\_ to \_\_\_\_\_ From \_\_\_\_\_ to \_\_\_\_\_  
 Date of acid 12-10-43 and 12-17-43 No. of gallons 2000  
 1st 24 hours after acid 100 Bbls. Net. (Pumped)  
 2nd 24 hours after acid 50 " " "  
Settled to 25 barrels per day.

FORMATION AND CASING RECORD

Formation	Top	Bottom	Top Pay	Bottom Pay	Remarks	Casing	
						Size	Set at
Red Rock	1405	1410				10"	70
Sunbury	1533					8-1/4"	764
Berea	1555					6-5/8"	1747
Antrim	1742					5-3/16"	2811
Traverse Lime	2085						
Dundee	2785	SLM	2849	2872			
			2879	2925			
Total Depth		2925					

Remarks 2784' CTM equals 2811' SLM.

Signed D. C. Shackelford