



Western Michigan University  
ScholarWorks at WMU

---

Legacy Scout Tickets from Pure Oil Company

---

8-20-2021

**MGRRE\_PureOilScoutTickets\_Bauer, Peter\_2\_21017104710000**

MGRRE

*Western Michigan University*

Follow this and additional works at: <https://scholarworks.wmich.edu/pure>



Part of the Geology Commons

---

#### **WMU ScholarWorks Citation**

MGRRE, "MGRRE\_PureOilScoutTickets\_Bauer, Peter\_2\_21017104710000" (2021). *Legacy Scout Tickets from Pure Oil Company*. 822.

<https://scholarworks.wmich.edu/pure/822>

This Document is brought to you for free and open access via ScholarWorks at WMU. It has been accepted for inclusion in Legacy Scout Tickets from Pure Oil Company by an authorized administrator of ScholarWorks at WMU. See the National Digital Catalogue - Science Base Catalogue for more collections submitted by MGRRE.



---

**MGRRE\_PureOilScoutTickets\_Bauer, Peter\_2\_21017104710000**

API 21017104710000

Permit Number 10471

Lease Name Bauer, Peter

Well Number 2

County Bay

Township 15N

Range 04E

Section 34

2021 DEQ or Pure co\_name Muskegon Development Company

Pure Number 164

Latitude 43.6546246

Longitude -83.972332

# THE PURE OIL COMPANY

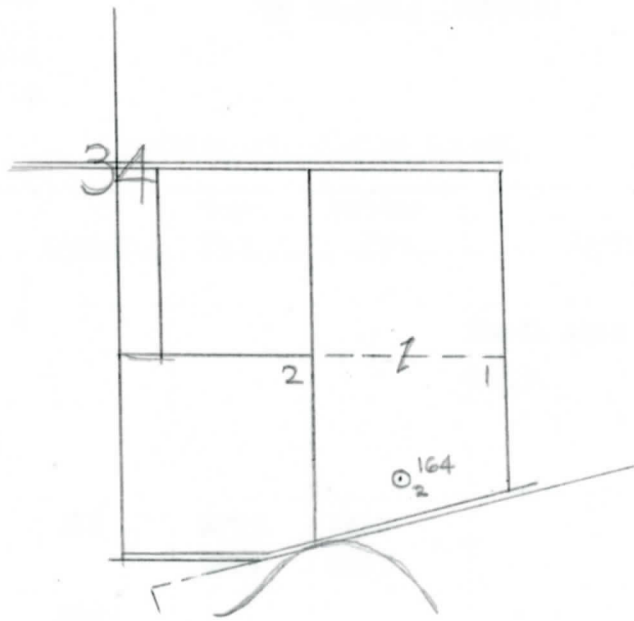
## LOCATION REPORT

Date November 3, 1943 A.F.E. No. \_\_\_\_\_  
 Division Mich. Producing District \_\_\_\_\_ Lease Peter Bauer  
 Acres \_\_\_\_\_ Lease No. \_\_\_\_\_ Elevation \_\_\_\_\_ Well No. 2 (Serial No. 164)  
 Quadrangle S<sub>2</sub> SE SE Sec. 34 Twp. 15 N Rge. 4 E ~~SE~~ Kawkawlin  
 Survey \_\_\_\_\_ County Bay State Michigan  
 Operator Gulf Ref. Co. Map Kawkawlin Twp - Bay Co.  
Gulf Refining Company Kawkawlin Township, Bay County

Feet from North Line of Lease	
<u>735</u>	<u>735</u>
" "	East " " "
<u>345</u>	<u>345</u>
" "	South " " "
" "	West " " "
Feet from North Line of Section	
<u>735</u>	<u>735</u>
" "	East " <u>1/4</u> "
<u>555</u>	<u>555</u>
" "	South " " "
" "	West " " "

*min*

- LEGEND**
- Location
  - ☀ Gas Well
  - Oil Well
  - ☀ Gas - Distillate Well
  - ∅ or ○ Dry Hole
  - Dry Showing Oil
  - ☀ Dry Showing Gas
  - ⊗ Abandoned Location
  - ☀ or ⊗ Abandoned Gas Well
  - or ● Abandoned Oil Well
  - ⊗ or ⊗ Input Well



Remarks: \_\_\_\_\_ Scale \_\_\_\_\_

Submitted by RN Civil Engineer Approved by \_\_\_\_\_ Division Manager  
 Approved by \_\_\_\_\_ Vice-President - General Manager

COMPLETION RECORD OF WELLS DRILLED BY OTHER OPERATORS

Michigan Producing Division

Date December 22, 1943 No. 164  
 State Mich. County Bay ~~Branch~~ Twp. Kawkawlin Sec. 34 Twp. 15 N Rge. 4 E  
 Well No. 2 (~~22222222~~) 164 Farm Peter Bauer Acres \_\_\_\_\_  
 Operator Gulf Refining Company Information secured ~~from~~ Scouting Department By \_\_\_\_\_  
 Date well started 11-2-43 Date well completed 12-2-43 Elevation 597.2

PRODUCTION RECORD

1st 24 hours natural Filled up 100 ft.  
 2nd 24 hours natural \_\_\_\_\_  
 Date of shot 12-14-43 and \_\_\_\_\_ No. of quarts \_\_\_\_\_ From \_\_\_\_\_ to \_\_\_\_\_ From \_\_\_\_\_ to \_\_\_\_\_  
 Date of acid 12-18-43 No. of gallons 1500  
 1st 24 hours after acid ~~XXXX~~ 75 Barrels (Pumped)  
 2nd 24 hours after acid \_\_\_\_\_

FORMATION AND CASING RECORD

Formation	Top	Bottom	Top Pay	Bottom Pay	Remarks	Casing	
						Size	Set at
Sunbury	1510					10"	87
Berea	1535				Small show oil at 1553.	6-5/8"	2746
Antrim	1725						
Traverse Lime	2043						
Dundee	2721	SLM	2793	2810			
			2817	2873			
Total Depth		2883					

Remarks \_\_\_\_\_

Signed D. C. Shackelford