



Western Michigan University  
ScholarWorks at WMU

---

Legacy Scout Tickets from Pure Oil Company

---

8-20-2021

**MGRRE\_PureOilScoutTickets\_Knochel, George  
C\_1\_21017105440000**

MGRRE  
*Western Michigan University*

Follow this and additional works at: <https://scholarworks.wmich.edu/pure>



Part of the Geology Commons

---

#### **WMU ScholarWorks Citation**

MGRRE, "MGRRE\_PureOilScoutTickets\_Knochel, George C\_1\_21017105440000" (2021). *Legacy Scout Tickets from Pure Oil Company*. 826.

<https://scholarworks.wmich.edu/pure/826>

This Document is brought to you for free and open access via ScholarWorks at WMU. It has been accepted for inclusion in Legacy Scout Tickets from Pure Oil Company by an authorized administrator of ScholarWorks at WMU. See the National Digital Catalogue - Science Base Catalogue for more collections submitted by MGRRE.



---

**MGRRE\_PureOilScoutTickets\_Knochel, George C\_1\_21017105440000**

API 21017105440000

Permit Number 10544

Lease Name Knochel, George C

Well Number 1

County Bay

Township 15N

Range 04E

Section 35

2021 DEQ or Pure co\_name Muskegon Development Company

Pure Number 168

Latitude 43.6647186

Longitude -83.9626384

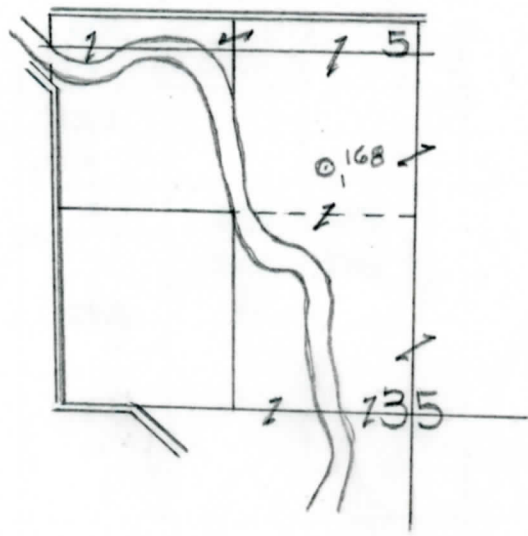
# THE PURE OIL COMPANY LOCATION REPORT

Date December 15, 1943 A.F.E. No. \_\_\_\_\_  
 Division Mich. Producing District \_\_\_\_\_ Lease Geo. C. Knochel  
 Acres \_\_\_\_\_ Lease No. \_\_\_\_\_ Elevation \_\_\_\_\_ Well No. 1 (Serial No. 168)  
 Quadrangle C S 1/2 NE NW Sec. 35 Twp. 15 N Rge. 4 E ~~Bay~~ Kawkawlin  
 Survey \_\_\_\_\_ County Bay State Michigan  
 Operator Gulf Refining Company Map Kawkawlin Twp - Bay Co

|            |            |                                 |                     |
|------------|------------|---------------------------------|---------------------|
|            |            | Feet from North Line of Lease   |                     |
| <u>660</u> | <u>660</u> | " "                             | East " " "          |
| <u>330</u> | <u>330</u> | " "                             | South " " "         |
| <u>660</u> | <u>660</u> | " "                             | West " <u>1/4</u> " |
| <u>990</u> | <u>990</u> | Feet from North Line of Section |                     |
| <u>660</u> | <u>660</u> | " "                             | East " " "          |
|            |            | " "                             | South " " "         |
|            |            | " "                             | West " " "          |

**LEGEND**

- ☉ Gas Well
- Oil Well
- ☼ Gas - Distillate Well
- or ○ Dry Hole
- Dry Showing Oil
- Location
- ☉ Dry Showing Gas
- ⊙ Abandoned Location
- ☼ or ☼ Abandoned Gas Well
- or ● Abandoned Oil Well
- or ○ Input Well



Remarks: \_\_\_\_\_ Scale \_\_\_\_\_

Submitted by RN Civil Engineer Approved by \_\_\_\_\_ Division Manager  
 Approved by \_\_\_\_\_ Vice-President - General Manager

THE PURE OIL COMPANY  
The Pure Oil Company

COMPLETION RECORD OF WELLS DRILLED BY OTHER OPERATORS

Michigan Producing Division

Date **February 16, 1944** No. **168**  
 State **Mich.** County **Bay** ~~Dixie~~ Twp. **Kawkawlin** Sec. **35** Twp. **15 N** Rge. **4 E**  
 Well No. **1** (~~County No.~~) **168** Farm **Geo. C. Knochel** Acres \_\_\_\_\_  
 Operator **Gulf Refining Company** Information secured ~~from~~ **Scouting Department** By \_\_\_\_\_  
 Date well started **12-19-43** Date well completed **1-30-44** Elevation **597.9**

PRODUCTION BOARD

1st 24 hours natural **Filled up 500 ft.**  
 2nd 24 hours natural \_\_\_\_\_  
 Date of shot \_\_\_\_\_ No. of quarts \_\_\_\_\_ From \_\_\_\_\_ to \_\_\_\_\_ From \_\_\_\_\_ to \_\_\_\_\_  
 Date of acid **2-8-44** **500**  
**2-12-44** No. of gallons **1000 (Total 1500)**  
~~XXXXX~~  
 1st 24 hours after acid **50 Barrels (Pumped)**  
 shot \_\_\_\_\_  
 2nd 24 hours after acid \_\_\_\_\_

FORMATION AND CASING RECORD

| Formation     | Top  | Bottom | Top Pay | Bottom Pay | Remarks | Casing |        |
|---------------|------|--------|---------|------------|---------|--------|--------|
|               |      |        |         |            |         | Size   | Set at |
| Sunbury       | 1555 | CTM    |         |            |         | 10"    | 85     |
| Berea         | 1577 | "      |         |            |         | 8-1/4" | 751    |
| Antrim        | 1750 | SLM    |         |            |         | 6-5/8" | 2790   |
| Traverse Lime | 2080 | "      |         |            |         |        |        |
| Dundee        | 2775 | "      | 2835    | 2850       |         |        |        |
|               |      |        | 2860    | 2924       |         |        |        |
| Total Depth   |      | 2924   |         |            |         |        |        |

Remarks **1632' CTM eq. 1620' SLM; 2115' CTM eq. 2115' SLM; 2795' CTM eq. 2790' SLM.**

Signed **D. C. Shackelford**