



Western Michigan University
ScholarWorks at WMU

Legacy Scout Tickets from Pure Oil Company

8-20-2021

MGRRE_PureOilScoutTickets_Zboralski_1_21017107280000

MGRRE

Western Michigan University

Follow this and additional works at: <https://scholarworks.wmich.edu/pure>



Part of the Geology Commons

WMU ScholarWorks Citation

MGRRE, "MGRRE_PureOilScoutTickets_Zboralski_1_21017107280000" (2021). *Legacy Scout Tickets from Pure Oil Company*. 832.

<https://scholarworks.wmich.edu/pure/832>

This Document is brought to you for free and open access via ScholarWorks at WMU. It has been accepted for inclusion in Legacy Scout Tickets from Pure Oil Company by an authorized administrator of ScholarWorks at WMU. See the National Digital Catalogue - Science Base Catalogue for more collections submitted by MGRRE.



MGRRE_PureOilScoutTickets_Zboralski_1_21017107280000

API 21017107280000

Permit Number 10728

Lease Name Zboralski

Well Number 1

County Bay

Township 15N

Range 03E

Section 13

2021 DEQ or Pure co_name Chapman Oil Company

Pure Number 174

Latitude 43.70485

Longitude -84.06035

THE PURE OIL COMPANY

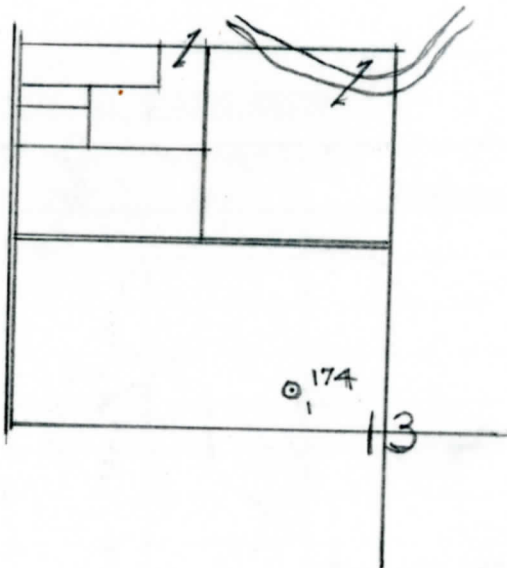
LOCATION REPORT

Date April 26, 1944 A.F.E. No. _____
 Division Mich. Producing District _____ Lease Zboralski
Zboralski
 Acres _____ Lease No. _____ Elevation _____ Well No. 1 (Serial No. 174)
 Quadrangle C S 1/2 SE NW Sec. 13 Twp. 15 N Rge. 3 E ~~Beaver~~ Beaver
 Survey _____ County Bay State Michigan
 Operator Chapman Oil Co. Map Beaver Twp - Bay Co.
Chapman Oil Company Beaver Township, Bay County

Feet from North Line of Lease	
<u>660</u>	660 " " East " " "
<u>330</u>	330 " " South " " "
	" " West " " "
Feet from North Line of Section	
<u>660</u>	660 " " East " <u>1/4</u> "
<u>330</u>	330 " " South " " "
	" " West " " "

LEGEND

- Location
- ☀ Gas Well
- Oil Well
- ☀ Gas - Distillate Well
- ∅ or ○ Dry Hole
- Dry Showing Oil
- ☀ Dry Showing Gas
- ⊗ Abandoned Location
- ☀ or ☀ Abandoned Gas Well
- or ● Abandoned Oil Well
- or ○ Input Well



Remarks: _____ Scale _____

Submitted by RN Civil Engineer Approved by _____ Division Manager
 Approved by _____ Vice-President - General Manager

COMPLETION RECORD OF WELLS DRILLED BY OTHER OPERATORS

Michigan Producing Division

Date May 17, 1944 No. 174
 State Mich. County Bay District Beaver Twp. 13 Sec. 13 Twp. 15 N Rge. 3 E
 Well No. 1 (Serial No.) (County No.) 174 Farm Zboralski Acres _____
 Operator Chapman Oil Company Information secured ~~from~~ By Scouting Department
 Date well started 3-14-44 Date well completed 5-10-44 Elevation 624.6

PRODUCTION BOARD

1st 24 hours natural Dry Hole
 2nd 24 hours natural _____
 Date of shot _____ No. of quarts _____ From _____ to _____ From _____ to _____
 Date of acid _____ No. of gallons _____
 1st 24 hours after acid shot _____
 2nd 24 hours after acid shot _____

FORMATION AND CASING RECORD

Formation	Top	Bottom	Top Pay	Bottom Pay	Remarks	Casing	
						Size	Set at
Mich. Series	485	513				10"	165
Marshall	533	620				8-1/4"	827
"	687					6-5/8"	1940 R
Sunbury	1725						
Berea	1752						
Antrim	1935						
Traverse Lime	2262						
Dundee	2972	SLM.			Show oil 3103-3106. Water (400 ft. in 2 hrs.) 3179-3189.		
Total Depth		3189					

Remarks 2964' CTM equals 2966' SLM.

Signed D. C. Shackelford