



Western Michigan University  
ScholarWorks at WMU

---

Legacy Scout Tickets from Pure Oil Company

---

8-20-2021

**MGRRE\_PureOilScoutTickets\_Plant, Willwan\_1\_21017108680000**

MGRRE

*Western Michigan University*

Follow this and additional works at: <https://scholarworks.wmich.edu/pure>



Part of the Geology Commons

---

#### **WMU ScholarWorks Citation**

MGRRE, "MGRRE\_PureOilScoutTickets\_Plant, Willwan\_1\_21017108680000" (2021). *Legacy Scout Tickets from Pure Oil Company*. 839.

<https://scholarworks.wmich.edu/pure/839>

This Document is brought to you for free and open access via ScholarWorks at WMU. It has been accepted for inclusion in Legacy Scout Tickets from Pure Oil Company by an authorized administrator of ScholarWorks at WMU. See the National Digital Catalogue - Science Base Catalogue for more collections submitted by MGRRE.



---

**MGRRE\_PureOilScoutTickets\_Plant, Willwan\_1\_21017108680000**

API 21017108680000

Permit Number 10868

Lease Name Plant, Willwan

Well Number 1

County Bay

Township 14N

Range 03E

Section 9

2021 DEQ or Pure co\_name Atha, Hunter and Rose, Louis

Pure Number 181

Latitude 43.62654

Longitude -84.1097

# THE PURE OIL COMPANY LOCATION REPORT

Date June 21, 1944 A.F.E. No. \_\_\_\_\_

Division Mich. Producing District \_\_\_\_\_ Lease William Plant  
Wm. Plant

Acres \_\_\_\_\_ Lease No. \_\_\_\_\_ Elevation \_\_\_\_\_ Well No. 1 (Serial No. 181)

Quadrangle SE SE SE Sec. 9 Twp. 14 N Rge. 3 E Twp. Williams

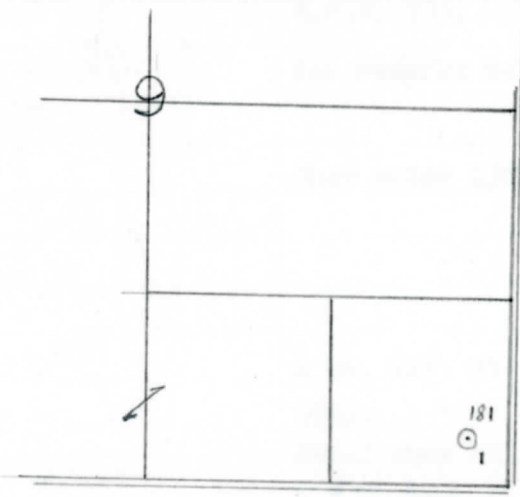
Survey \_\_\_\_\_ County Bay State Michigan

Operator Hunter Atha & Louis Rose Map Williams Twp - Bay Co

_____	Feet from North Line of Lease
<u>330</u>	" " East " " "
<u>330</u>	" " South " " "
_____	" " West " " "
_____	Feet from North Line of Section
<u>330</u>	" " East " <u>1/4</u> "
<u>330</u>	" " South " " "
_____	" " West " " "

### LEGEND

- Location
- ☀ Gas Well
- Oil Well
- ☀ Gas - Distillate Well
- ⊘ or ○ Dry Hole
- Dry Showing Oil
- ☀ Dry Showing Gas
- ⊘ Abandoned Location
- ☀ or ☀ Abandoned Gas Well
- or ● Abandoned Oil Well
- or ○ Input Well



Remarks: \_\_\_\_\_  
\_\_\_\_\_  
\_\_\_\_\_

Scale \_\_\_\_\_

Submitted by \_\_\_\_\_ Civil Engineer Approved by \_\_\_\_\_ Division Manager

Approved by \_\_\_\_\_ Vice-President - General Manager

The Pure Oil Company  
COMPLETION RECORD OF WELLS DRILLED BY OTHER OPERATORS

Michigan Producing Division

Date **September 20, 1944** No. **181**  
 State **Mich.** County **Bay** Dstct **Williams** Sec. **9** Twp. **14 N** Rge. **3 E**  
 Well No. **1** (Serial No.) **181** Farm **Wm. Plant** Acres \_\_\_\_\_  
 Operator **Hunter Atha-Louis Rose** Information secured ~~xxxx~~ By **Scouting Department**  
 Date well started **7-7-44** Date well completed **9-16-44** Elevation **629.0**

PRODUCTION BOARD

1st 24 hours natural **Dry Hole**  
 2nd 24 hours natural \_\_\_\_\_  
 Date of shot \_\_\_\_\_ No. of quarts \_\_\_\_\_ From \_\_\_\_\_ to \_\_\_\_\_ From \_\_\_\_\_ to \_\_\_\_\_  
 Date of acid \_\_\_\_\_ No. of gallons \_\_\_\_\_  
 1st 24 hours after acid shot \_\_\_\_\_  
 2nd 24 hours after acid shot \_\_\_\_\_

FORMATION AND CASING RECORD

Formation	Top	Bottom	Top Pay	Bottom Pay	Remarks	Casing	
						Size	Set at
Marshall	1076	(-447)			H.F.W. 735. (-106)	10"	211
Coldw. Red Rock	1437	1456	(-808)		See remarks below.	8-1/4"	705
" "	1460	1500				6-5/8"	1432
Berea	2315	(-1686)			Show water 2380-90. (-1751)		
Antrim	2475	(-1846)					
Traverse Form.	2820	(-2191)					
Traverse Lime	2827	(-2198)					
Dundee	3506	CTM.	(-2877)		1 ba. S.W. at 3762. (-3133) Small show oil 3800. (-3171) H.F.W. 3880. (-3251)		
Total Depth		3880	(-3251)				

Remarks **762' eq. 760' SOM; 2244' eq. 2230' SLM.**  
**Red Rock 1180'-1237'; 1245'-1266'; 1275'-1300'; 1334'-1340'; 1346'-1352'; 1356'-1366'. (-551)**

Signed **D. C. Shackelford**