



Western Michigan University  
ScholarWorks at WMU

---

Legacy Scout Tickets from Pure Oil Company

---

8-20-2021

**MGRRE\_PureOilScoutTickets\_Agnor, W J\_1\_21017111190000**

MGRRE

*Western Michigan University*

Follow this and additional works at: <https://scholarworks.wmich.edu/pure>



Part of the Geology Commons

---

#### **WMU ScholarWorks Citation**

MGRRE, "MGRRE\_PureOilScoutTickets\_Agnor, W J\_1\_21017111190000" (2021). *Legacy Scout Tickets from Pure Oil Company*. 850.

<https://scholarworks.wmich.edu/pure/850>

This Document is brought to you for free and open access via ScholarWorks at WMU. It has been accepted for inclusion in Legacy Scout Tickets from Pure Oil Company by an authorized administrator of ScholarWorks at WMU. See the National Digital Catalogue - Science Base Catalogue for more collections submitted by MGRRE.



---

**MGRRE\_PureOilScoutTickets\_Agnor, W J\_1\_21017111190000**

API 21017111190000

Permit Number 11119

Lease Name Agnor, W J

Well Number 1

County Bay

Township 18N

Range 03E

Section 27

2021 DEQ or Pure co\_name Walton, H. E. and Stewart, William B.

Pure Number 192

Latitude 43.93949

Longitude -84.09585

# THE PURE OIL COMPANY LOCATION REPORT

Date October 11, 1944

A.F.E. No. \_\_\_\_\_

Division Mich. Producing District \_\_\_\_\_ Lease W. J. Agnor  
W. J. Agnor

Acres \_\_\_\_\_ Lease No. \_\_\_\_\_ Elevation \_\_\_\_\_ Well No. 1 (Serial No. 192)

Quadrangle NW-NE-NW Sec. 27 Twp. 18 N Rge. 3 E ~~ONE~~ ~~TWO~~ Gibson  
NW NE NW Twp. Gibson

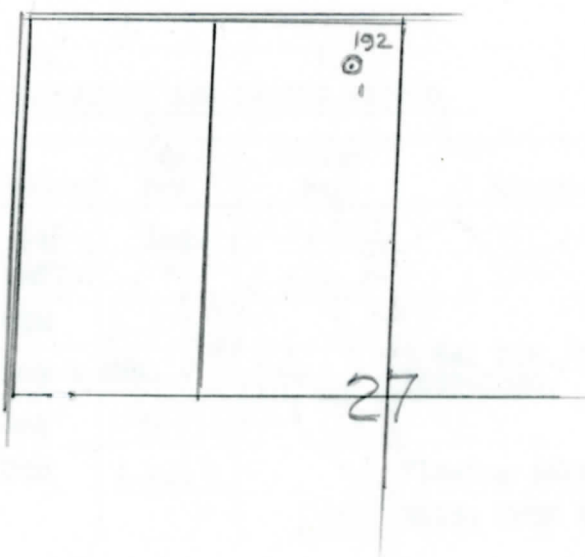
Survey \_\_\_\_\_ County Bay State Michigan

Operator H. E. Walton & William B. Stewart Map Gibson Twp - Bay Co  
H. E. Walton & Wm. B. Stewart Gibson Township, Bay County

|            |            |                                 |
|------------|------------|---------------------------------|
| <u>330</u> | <u>330</u> | Feet from North Line of Lease   |
| <u>330</u> | <u>330</u> | " " East " " "                  |
|            |            | " " South " " "                 |
|            |            | " " West " <u>1/4</u> "         |
| <u>330</u> | <u>330</u> | Feet from North Line of Section |
| <u>330</u> | <u>330</u> | " " East " " "                  |
|            |            | " " South " " "                 |
|            |            | " " West " " "                  |

### LEGEND

- Location
- ☀ Gas Well
- Oil Well
- ☀ Gas - Distillate Well
- ∅ or ○ Dry Hole
- Dry Showing Oil
- ☀ Dry Showing Gas
- ⊗ Abandoned Location
- ☀ or ☀ Abandoned Gas Well
- or ● Abandoned Oil Well
- or ○ Input Well



Remarks: \_\_\_\_\_ Scale \_\_\_\_\_

Submitted by RN Civil Engineer Approved by \_\_\_\_\_ Division Manager

Approved by \_\_\_\_\_ Vice-President - General Manager

COMPLETION RECORD OF WELLS DRILLED BY OTHER OPERATORS

Michigan Producing Division

Date March 7, 1945 No. 192  
 State Bay County Mich. ~~DISC~~ Twp. Gibson Sec. 27 Twp. 18 N Rge. 3 E  
 Well No. 1 (~~Serial No.~~) 192 Farm W. J. Agnor Acres \_\_\_\_\_  
 Operator H. E. Walton-Wm. B. Stewart Information secured ~~FROM~~ By Scouting Department  
 Date well started 11-1-44 Date well completed 2-27-45 Elevation 693.8

PRODUCTION BOARD

**Dry Hole**

1st 24 hours natural \_\_\_\_\_  
 2nd 24 hours natural \_\_\_\_\_  
 Date of shot \_\_\_\_\_ No. of quarts \_\_\_\_\_ From \_\_\_\_\_ to \_\_\_\_\_ From \_\_\_\_\_ to \_\_\_\_\_  
 Date of acid \_\_\_\_\_ No. of gallons \_\_\_\_\_  
 1st 24 hours after acid shot \_\_\_\_\_  
 2nd 24 hours after acid shot \_\_\_\_\_

FORMATION AND CASING RECORD

| Formation       | Top  | Bottom  | Top Pay | Bottom Pay | Remarks                              | Casing  |  |
|-----------------|------|---|---------|------------|--------------------------------------|---------|--|
|                 |      |   |         |            |                                      | Size    | Set at                                       |
| Marshall        | 425  | 545   | Log.    | (1269)     |                                      | 10"     | 115  |
| Coldw. Red Rock | 1477 | 1487  | "       | (782)      |                                      | 8-1/4"  | 652  |
| Sunbury         | 1570 | CTM   | (-876)  |            |                                      | 6-5/8"  | 2568 Out                                     |
| Berea           | 1595 | Log & CTM.                                    | (-901)  |            | 3 ba. S.W./hr. 1659-1680. (-965)     | 6-5/8"  | 2640   |
| Antrim          | 1775 | Log   | (-1081) |            |                                      | 5-3/16" | 2926 1/2                                     |
| Traverse Lime   | 2121 | CTM   | (-1422) |            | Flowing salt water                   |         |  |
|                 |      |   |         | (-1729)    | 2423; HFSW 2612-16;                  |         | (water may have broken in under 6-5/8" csg.) |
| Dundee          | 2917 | SLM   | (-2223) |            | Good show oil 2925-2935 SLM. (-2231) |         |  |
| Perf.           | 2919 | 2926 with 24 shots - no recovery - salt water |         |            |                                      |         | 3058-3060.                                   |
| Total Depth     |      | 3060  | (-2366) |            |                                      |         | (-2364)                                      |

Remarks 2970' equals 2937' SLM.

Signed D. C. Shackelford