



Western Michigan University  
ScholarWorks at WMU

---

Legacy Scout Tickets from Pure Oil Company

---

8-20-2021

**MGRRE\_PureOilScoutTickets\_Sajdak, George & Anna; Dufresne, E  
& E\_1\_21017111770000**

MGRRE

*Western Michigan University*

Follow this and additional works at: <https://scholarworks.wmich.edu/pure>



Part of the Geology Commons

---

#### WMU ScholarWorks Citation

MGRRE, "MGRRE\_PureOilScoutTickets\_Sajdak, George & Anna; Dufresne, E & E\_1\_21017111770000" (2021). *Legacy Scout Tickets from Pure Oil Company*. 856.  
<https://scholarworks.wmich.edu/pure/856>

This Document is brought to you for free and open access via ScholarWorks at WMU. It has been accepted for inclusion in Legacy Scout Tickets from Pure Oil Company by an authorized administrator of ScholarWorks at WMU. See the National Digital Catalogue - Science Base Catalogue for more collections submitted by MGRRE.



---

**MGRRE\_PureOilScoutTickets\_Sajdak, George & Anna; Dufresne, E & E\_1\_21017111770000**

API 21017111770000

Permit Number 11177

Lease Name Sajdak, George & Anna; Dufresne, E & E

Well Number 1

County Bay

Township 15N

Range 04E

Section 26

2021 DEQ or Pure co\_name Muskegon Development Company

Pure Number 198

Latitude 43.66846

Longitude -83.95307

THE PURE OIL COMPANY

LOCATION REPORT

Date November 1, 1944

A.F.E. No. \_\_\_\_\_

Division Michigan Producing District \_\_\_\_\_

Lease Geo. Sajdak & Anna Sajdak and Edmond & Ella Dufresne

Acres \_\_\_\_\_ Lease No. 26 Elevation \_\_\_\_\_ Well No. 1 (Serial No. 198)

Quadrangle S 1/2 SE SE Sec. 26 Twp. 15 N Rge. 4 E ~~Dist.~~ Kawkawlin Twp. Kawkawlin

Survey \_\_\_\_\_ County Bay State Michigan

Operator C. W. Jones & E. G. Steuernal, Agents Map Kawkawlin Twp. Bay Co.

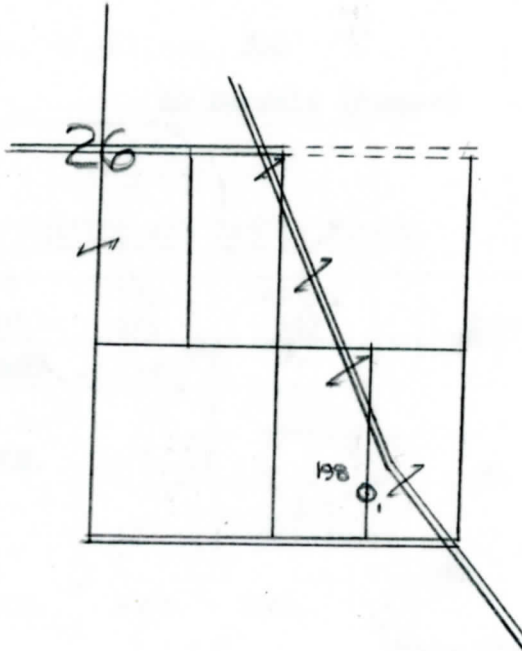
Feet from North Line of Lease  
660 660 " " East " " "  
330 330 " " South " " "  
" " West " " "

Feet from North Line of Section  
660 660 " " East " 1/4 "  
330 330 " " South " " "  
" " West " " "

LEGEND

○ Location

- ☀ Gas Well
- Oil Well
- ☀ Gas - Distillate Well
- or ○ Dry Hole
- Dry Showing Oil
- ☀ Dry Showing Gas
- ⊗ Abandoned Location
- ☀ or ☀ Abandoned Gas Well
- or ● Abandoned Oil Well
- or ○ Input Well



Scale \_\_\_\_\_

Remarks: \_\_\_\_\_

Submitted by RN \_\_\_\_\_  
Civil Engineer

Approved by \_\_\_\_\_  
Division Manager

Approved by \_\_\_\_\_  
Vice-President - General Manager

LOCATION REPORT

COMPLETION RECORD OF WELLS DRILLED BY OTHER OPERATORS

Michigan Producing Division

Date March 14, 1945 No. 198  
 State Mich. County Bay ~~XXXXXX~~ Twp. Kawkawlin Sec. 26 Twp. 15 N Rge. 4 E  
 Well No. 1 (~~XXXXXX~~ 198) Farm Sajdak & Defresne Acres \_\_\_\_\_  
 Operator C. W. Jones-E. G. Steuernol, Information secured ~~XXXX~~ By Scouting Department  
 Agts. \_\_\_\_\_  
 Date well started 12-1-44 Date well completed 2-27-45 Elevation 603.9

PRODUCTION BOARD

1st 24 hours natural Filled up 700 ft.  
 2nd 24 hours natural \_\_\_\_\_  
 Date of shot \_\_\_\_\_ No. of quarts \_\_\_\_\_ From \_\_\_\_\_ to \_\_\_\_\_ From \_\_\_\_\_ to \_\_\_\_\_  
 Date of acid 3-9-45 No. of gallons 500  
 1st 24 hours after acid 40 Barrels (Pumped)  
 shot \_\_\_\_\_  
 2nd 24 hours after acid \_\_\_\_\_

FORMATION AND CASING RECORD

Formation	Top	Bottom	Top Pay	Bottom Pay	Remarks	Casing	
						Size	Set at
Red Rock	1418	1423	(-814)			10"	82
Sunbury	1570	(-966)				8-1/4"	756
Berea	1590	SLM.	(-986)			6-5/8"	1761
Antrim	1790	(-1186)				5-3/16"	2822
Traverse Lime	2115	(-1511)					
Dundee (-2208)	2812	SLM.	2878	2904	(-2274) Water (400 ft.) from 2933-2936.		
Total Depth		2936	(-2332)		(-2329)		
Plugged back:		2930	(-2326)				

Remarks \_\_\_\_\_  
 \_\_\_\_\_  
 \_\_\_\_\_

Signed D. C. Shackelford