



Western Michigan University
ScholarWorks at WMU

Legacy Scout Tickets from Pure Oil Company

8-20-2021

**MGRRE_PureOilScoutTickets_County of Bay,
Michigan_1_21017112130000**

MGRRE
Western Michigan University

Follow this and additional works at: <https://scholarworks.wmich.edu/pure>



Part of the Geology Commons

WMU ScholarWorks Citation

MGRRE, "MGRRE_PureOilScoutTickets_County of Bay, Michigan_1_21017112130000" (2021). *Legacy Scout Tickets from Pure Oil Company*. 859.
<https://scholarworks.wmich.edu/pure/859>

This Document is brought to you for free and open access via ScholarWorks at WMU. It has been accepted for inclusion in Legacy Scout Tickets from Pure Oil Company by an authorized administrator of ScholarWorks at WMU. See the National Digital Catalogue - Science Base Catalogue for more collections submitted by MGRRE.



MGRRE_PureOilScoutTickets_County of Bay, Michigan_1_21017112130000

API 21017112130000

Permit Number 11213

Lease Name County of Bay, Michigan

Well Number 1

County Bay

Township 14N

Range 06E

Section 18

2021 DEQ or Pure co_name Sumner Energy, Incorporated

Pure Number 201

Latitude 43.6222553

Longitude -83.8009096

WELL REPORT - OUTSIDE OPERATIONS

SERIAL NO. 201STATE Michigan ~~NEK~~ CO. BayOPERATOR J. F. Ward Engineering Co.FARM County of Bay, Michigan WELL NO. 1TWP. Hampton S. 18 T. 14N R. 6ELOC. NE NE NEWILDCAT ☐ FIELD ☐ FIELD NAME _____

MAP NO. _____ CO-ORD. _____ ELEV. _____

STATUS _____

Operator's name changed from:
Johnson Oil Company

NORTH

DATE 2-9-48 SCOUT H. J. G.

THE PURE OIL COMPANY LOCATION REPORT

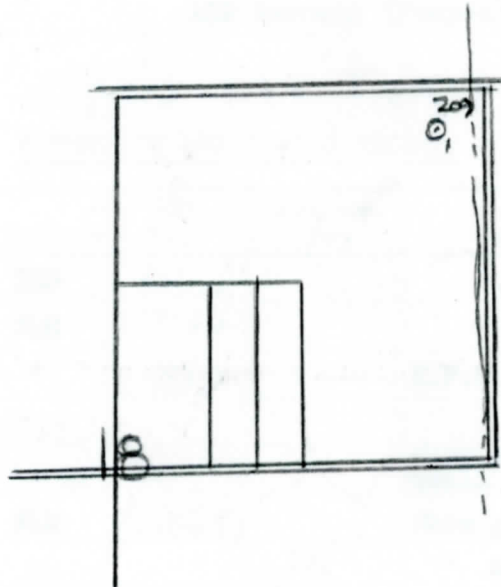
Date November 15, 1944 A.F.E. No. _____
 Division Mich. Producing District _____ Lease County of Bay Michigan
 Acres _____ Lease No. _____ Elevation _____ Well No. 1 (Serial No. 201)
 Quadrangle NE-NE-NE Sec. 18 Twp. 14 N Rge. 6 E Twp. Hampton
 Survey _____ County Bay State Michigan
 Operator Johnson Oil Co. Map Hampton Township, Bay County

330 330 Feet from North Line of Lease
330 330 " " East " " "
 " " South " " "
 " " West " 1/4 "
330 330 Feet from North Line of Section
330 330 " " East " " "
 " " South " " "
 " " West " " "

LEGEND

○ Location

- ☀ Gas Well
- Oil Well
- ☀ Gas - Distillate Well
- or ○ Dry Hole
- Dry Showing Oil
- ☀ Dry Showing Gas
- Abandoned Location
- ☀ or ☀ Abandoned Gas Well
- or ● Abandoned Oil Well
- or ○ Input Well



N



Scale _____

Remarks: _____

Submitted by RN Civil Engineer Approved by _____ Division Manager
 Approved by _____ Vice-President - General Manager

THE PURE OIL COMPANY

The Pure Oil Company

COMPLETION RECORD OF WELLS DRILLED BY OTHER OPERATORS

Michigan Producing Division

Date February 14, 1945

No. 201

State Mich. County Bay Twp. Hampton Sec. 18 Twp. 14 N Rge. 6 E

(Serial No.)

Well No. 1 (201) Farm County of Bay Michigan Acres

Operator Johnson Oil Company Information secured By Scouting Department

Date well started 11-17-44 Date well completed 1-22-45 Elevation 335.9

PRODUCTION BOARD

9
1st 24 hours natural Filled up 2500 ft.

2nd 24 hours natural

Date of shot 2-7-45 No. of quarts 2500 From to From to

Date of acid 1-28-45 No. of gallons 1000

1st 24 hours after acid shot 102 Barrels (Pumped)

2nd 24 hours after acid

FORMATION AND CASING RECORD

Formation	Top	Bottom	Top Pay	Bottom Pay	Remarks	Casing	
						Size	Set at
Marshall	320	350	(+266)			10"	84
Sunbury	1447	SLM	(-861)			8-1/4"	690
Berea	1473	"	(-887)		H.F.W. 1497-1911	6-5/8"	1622
Antrim	1655	(-1069)				5-3/16"	2667
Traverse Lime	1982	(-1396)			Show salt water and small show oil 1995.	(-1409)	
Dundee	2655	SLM	(-2069)		Show gas 2859-2862.	(-2273)	
			2869	2875	" oil 2862-2865.	(-2276)	
Total Depth		2880	(-2294)				

Remarks

Signed

D. C. Shackelford