



Western Michigan University  
ScholarWorks at WMU

---

Legacy Scout Tickets from Pure Oil Company

---

8-20-2021

**MGRRE\_PureOilScoutTickets\_Edward\_1\_21017112740000**

MGRRE

*Western Michigan University*

Follow this and additional works at: <https://scholarworks.wmich.edu/pure>



Part of the Geology Commons

---

#### **WMU ScholarWorks Citation**

MGRRE, "MGRRE\_PureOilScoutTickets\_Edward\_1\_21017112740000" (2021). *Legacy Scout Tickets from Pure Oil Company*. 864.

<https://scholarworks.wmich.edu/pure/864>

This Document is brought to you for free and open access via ScholarWorks at WMU. It has been accepted for inclusion in Legacy Scout Tickets from Pure Oil Company by an authorized administrator of ScholarWorks at WMU. See the National Digital Catalogue - Science Base Catalogue for more collections submitted by MGRRE.



---

**MGRRE\_PureOilScoutTickets\_Edward\_1\_21017112740000**

API 21017112740000

Permit Number 11274

Lease Name Edward

Well Number 1

County Bay

Township 14N

Range 05E

Section 7

2021 DEQ or Pure co\_name Muskegon Development Company

Pure Number 206

Latitude 43.6320379

Longitude -83.9263891

THE PURE OIL COMPANY

LOCATION REPORT

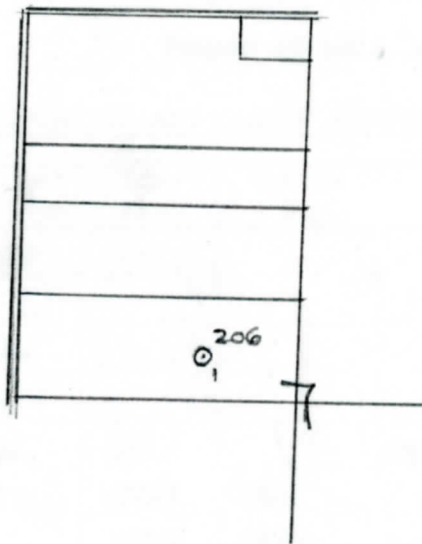
Date December 13, 1944 A.F.E. No. \_\_\_\_\_  
 Division Mich. Producing District \_\_\_\_\_ Lease Edward  
 Acres \_\_\_\_\_ Lease No. \_\_\_\_\_ Elevation \_\_\_\_\_ Well No. 1 (Serial No. 206)  
 Quadrangle S 1/2 - SE - NW Sec. 7 Twp. 14 N Rge. 5 E ~~Blk. Disc~~ Bangor  
 Survey \_\_\_\_\_ County Bay State Michigan  
 Operator Gulf Ref. Co. Map Bangor Twp., Bay Co.  
Gulf Refining Company

Feet from North Line of Lease  
660 660 " " East " " "  
330 330 " " South " " "  
 " " West " " "  
 Feet from North Line of Section  
660 660 " " East " 1/4 "  
330 330 " " South " " "  
 " " West " " "

LEGEND

- Location
- ☀ Gas Well
- Oil Well
- ☀ Gas - Distillate Well
- ∅ or ○ Dry Hole
- Dry Showing Oil
- ☀ Dry Showing Gas
- ⊗ Abandoned Location
- ☀ or ☀ Abandoned Gas Well
- or ● Abandoned Oil Well
- or ○ Input Well

*Loc*



Remarks: \_\_\_\_\_ Scale \_\_\_\_\_

Submitted by RN Civil Engineer Approved by \_\_\_\_\_ Division Manager  
 Approved by \_\_\_\_\_ Vice-President - General Manager

Date December 13, 1944

LOCATION REPORT  
THE STATE OF MICHIGAN

W.E.E. NO.

COMPLETION RECORD OF WELLS DRILLED BY OTHER OPERATORS

Michigan Producing Division

Date February 21, 1945 No. 206  
 State Mich. County Bay Twp. Bangor Sec. 7 Twp. 14 N Rge. 5 E  
 Well No. 1 (XXXXXX) 206 Farm Edward Acres  
 Operator Gulf Refining Company Information secured By Scouting Department  
 Date well started 12-23-44 Date well completed 1-29-45 Elevation 592.3

PRODUCTION BOARD

1st 24 hours natural Filled up 200 ft.  
 2nd 24 hours natural  
 Date of shot No. of quarts From to From to  
 Date of acid 2-5-45; 2-12-45 No. of gallons 1500  
 1st 24 hours after acid Pumped 96 bbls. oil and 10 bbls. salt water.  
 2nd 24 hours after acid Pumped 49 bbls. oil - no salt water.

FORMATION AND CASING RECORD

Formation	Top	Bottom	Top Pay	Bottom Pay	Remarks	Casing	
						Size	Set at
Coldw. Red Rock	1373	1378	(-781)			10"	92
Sunbury	1523	(-931)				8-1/4"	747
Berea	1545	SLM.	(-953)			6-5/8"	2756
Antrim	1718	(-1126)					
Traverse Line	2053	SLM.	(-1461)		Small show oil 2150.	(-1558)	
Dundee	2738	(-2146)	2785	2804	(-2193)		
			2815	2884	(-2223)		
Total Depth		2890	(-2298)				

Remarks 1553' eq. 1547' SLM; 2063' eq. 2060' SLM.

Signed D. C. Shackelford