



Western Michigan University  
ScholarWorks at WMU

---

Legacy Scout Tickets from Pure Oil Company

---

8-20-2021

**MGRRE\_PureOilScoutTickets\_Badour, Roy\_1\_21017113240000**

MGRRE

*Western Michigan University*

Follow this and additional works at: <https://scholarworks.wmich.edu/pure>



Part of the Geology Commons

---

#### **WMU ScholarWorks Citation**

MGRRE, "MGRRE\_PureOilScoutTickets\_Badour, Roy\_1\_21017113240000" (2021). *Legacy Scout Tickets from Pure Oil Company*. 867.

<https://scholarworks.wmich.edu/pure/867>

This Document is brought to you for free and open access via ScholarWorks at WMU. It has been accepted for inclusion in Legacy Scout Tickets from Pure Oil Company by an authorized administrator of ScholarWorks at WMU. See the National Digital Catalogue - Science Base Catalogue for more collections submitted by MGRRE.



---

**MGRRE\_PureOilScoutTickets\_Badour, Roy\_1\_21017113240000**

API 21017113240000

Permit Number 11324

Lease Name Badour, Roy

Well Number 1

County Bay

Township 14N

Range 06E

Section 16

2021 DEQ or Pure co\_name Summit Essexville, Incorporated

Pure Number 209

Latitude 43.6205526

Longitude -83.7637121

THE PURE OIL COMPANY

LOCATION REPORT

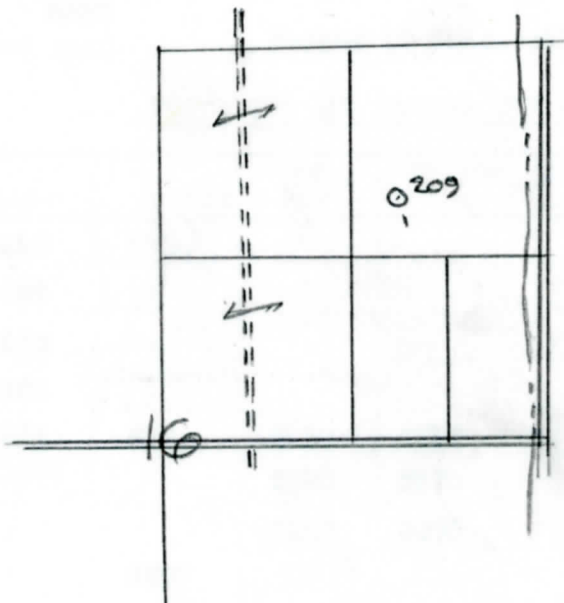
Date January 10, 1945 A.F.E. No. \_\_\_\_\_  
 Division Mich. Producing District \_\_\_\_\_ Lease Roy Badour  
 Acres \_\_\_\_\_ Lease No. \_\_\_\_\_ Elevation \_\_\_\_\_ Well No. 1 (Serial No. 209)  
 Quadrangle SW NE NE Sec. 16 Twp. 14 N Rge. 6 E Twp. Hampton  
 Survey \_\_\_\_\_ County Bay State Michigan  
 Operator Gulf Ref. Co. Map Hampton Twp., Bay Co.

		Feet from North Line of Lease
	" "	East " " "
<u>330</u>	<u>330</u>	" " South " " "
<u>330</u>	<u>330</u>	" " West " " "
<u>990</u>	<u>990</u>	Feet from North Line of Section
<u>990</u>	<u>990</u>	" " East " " "
		" " South " " "
		" " West " " "

LEGEND

- Location
- ☀ Gas Well
- Oil Well
- ☀ Gas - Distillate Well
- ∅ or ○ Dry Hole
- Dry Showing Oil
- ☀ Dry Showing Gas
- ⊗ Abandoned Location
- ☀ or ⊗ Abandoned Gas Well
- or ● Abandoned Oil Well
- or ○ Input Well

*RW*



Scale \_\_\_\_\_

Remarks: \_\_\_\_\_  
 \_\_\_\_\_  
 \_\_\_\_\_

Submitted by RW Civil Engineer Approved by \_\_\_\_\_ Division Manager  
 Approved by \_\_\_\_\_ Vice-President - General Manager

**Michigan Producing** Division

Date **February 21, 1945** No. **209**  
 State **Mich.** County **Bay** ~~XXXX~~ Twp. **Hampton** Sec. **16** Twp. **14 N** Rge. **6 E**  
 (Serial No.)  
 Well No. **1** ~~(XXXXXX)~~ **209** Farm **Roy Badour** Acres  
 Operator **Gulf Refining Company** Information secured ~~XXXX~~ By **Scouting Department**  
 Date well started **1-13-45** Date well completed **2-1-45** Elevation **585.2**

PRODUCTION BOARD

1st 24 hours natural **Pumped 3 to 6 Barrels**  
 2nd 24 hours natural  
 Date of shot No. of quarts From to From to  
 Date of acid **2-16-45** No. of gallons **1000**  
 1st 24 hours after acid ~~XXXX~~ **Pumped 85 bbls. oil and 9 bbls. salt water.**  
 2nd 24 hours after acid ~~XXXX~~ **Pumped 40 bbls. oil and 4 bbls. salt water.**

FORMATION AND CASING RECORD

Formation	Top	Bottom	Top Pay	Bottom Pay	Remarks	Casing	
						Size	Set at
Sunbury	1440	(-855)				10"	140
Berea	1469	(-884)				6-5/8"	2693
Antrim	1652	(-1067)					
Traverse Line	1980	(-7395)					
Dundee	2664	SLM	2730	2740	(-2145)		
	(-2079)		2780	2800	(-2195)		
			2867	2870	(-2282)		
Total Depth		2897	(-2312)				

Remarks

Signed **D. C. Shackelford**