



Western Michigan University
ScholarWorks at WMU

Legacy Scout Tickets from Pure Oil Company

8-20-2021

**MGRRE_PureOilScoutTickets_Hartley, Thomas
J_1_21017113890000**

MGRRE
Western Michigan University

Follow this and additional works at: <https://scholarworks.wmich.edu/pure>



Part of the Geology Commons

WMU ScholarWorks Citation

MGRRE, "MGRRE_PureOilScoutTickets_Hartley, Thomas J_1_21017113890000" (2021). *Legacy Scout Tickets from Pure Oil Company*. 870.
<https://scholarworks.wmich.edu/pure/870>

This Document is brought to you for free and open access via ScholarWorks at WMU. It has been accepted for inclusion in Legacy Scout Tickets from Pure Oil Company by an authorized administrator of ScholarWorks at WMU. See the National Digital Catalogue - Science Base Catalogue for more collections submitted by MGRRE.



MGRRE_PureOilScoutTickets_Hartley, Thomas J_1_21017113890000

API 21017113890000

Permit Number 11389

Lease Name Hartley, Thomas J

Well Number 1

County Bay

Township 15N

Range 04E

Section 28

2021 DEQ or Pure co_name Muskegon Development Company

Pure Number 212

Latitude 43.670126

Longitude -84.0063586

THE PURE OIL COMPANY

LOCATION REPORT

Date March 7, 1945

A.F.E. No. _____

Division Mich. Producing District _____

Lease Thomas J. Hartley

Acres _____ Lease No. _____ Elevation _____ Well No. 1 (Serial No. 212)

Quadrangle N¹/₂ SW SW Sec. 28 Twp. 15 N Rge. 4 E Twp. Kawkawlin

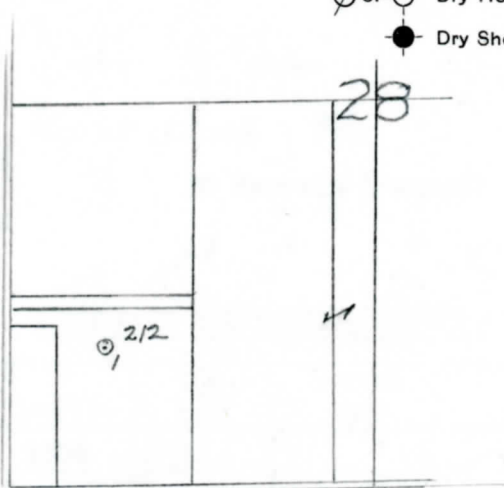
Survey _____ County Bay State Michigan

Operator Gulf Refining Co. Map Kawkawlin Twp., Bay Co.

277 277 Feet from North Line of Lease
 " " East " " "
654 654 " " South " " "
 " " West " " "
 Feet from North Line of Section
 " " East " " "
974 974 " " South " 1/4 "
654 654 " " West " " "

LEGEND

- Location
- ☀ Gas Well
- Oil Well
- ☀ Gas - Distillate Well
- ∅ or ○ Dry Hole
- Dry Showing Oil
- ☀ Dry Showing Gas
- ⊗ Abandoned Location
- ☀ or ☀ Abandoned Gas Well
- or ● Abandoned Oil Well
- or ○ Input Well



Remarks: _____

Scale _____

Submitted by _____
Civil Engineer

Approved by _____
Division Manager

Approved by _____
Vice-President - General Manager

LOCATION REPORT

COMPLETION RECORD OF WELLS DRILLED BY OTHER OPERATORS

Michigan Producing Division

Date **May 16, 1945** No. **212**
 State **Mich.** County **Bay** Twp. **Kawkawlin** Sec. **28** Twp. **15 N** Rge. **4 E**
 Well No. **1** (Serial No.) **212** Farm **Thomas J. Hartley** Acres
 Operator **Gulf Refining Co.** Information secured ~~XXXX~~ By **Scouting Department**
 Date well started **3-28-45** Date well completed **4-30-45** Elevation **606.8**

PRODUCTION BOARD

1st 24 hours natural **Filled up 350 ft.**
 2nd 24 hours natural
 Date of shot No. of quarts From To From to
 Date of acid **5-9-45** No. of gallons **500**
 1st ~~24~~ ^{**14**} hours after acid ~~shot~~ **30 Barrels (Pumped)**
 2nd 24 hours after acid **49 " "**

FORMATION AND CASING RECORD

Formation	Top	Bottom	Top Pay	Bottom Pay	Remarks	Casing	
						Size	Set at
Coldw. Red Rock	1495	1500	(-888)			10"	93
Sunbury	1595	(-988)				8-1/4"	840
Berea	1618	(-1011)			1/2 ba. S.W. per hr. 1625-1630.	6-5/8"	2832
Antrim	1790	(-1183)			(-1018)		
Traverse Lime	2138	(-1531)					
Dundee	2820	(-2213)	2883	2905	(-2274)		
			2920	2949	(-2313)		
Total Depth		2949	(-2342)				

Remarks **1616' equals 1621' S.L.M.**

Signed **D. C. Shackelford**