



Western Michigan University
ScholarWorks at WMU

Legacy Scout Tickets from Pure Oil Company

8-20-2021

MGRRE_PureOilScoutTickets_Arms, Maurice A & Flora B; County of Bay_1_21017114540000

MGRRE

Western Michigan University

Follow this and additional works at: <https://scholarworks.wmich.edu/pure>



Part of the Geology Commons

WMU ScholarWorks Citation

MGRRE, "MGRRE_PureOilScoutTickets_Arms, Maurice A & Flora B; County of Bay_1_21017114540000" (2021). *Legacy Scout Tickets from Pure Oil Company*. 876.
<https://scholarworks.wmich.edu/pure/876>

This Document is brought to you for free and open access via ScholarWorks at WMU. It has been accepted for inclusion in Legacy Scout Tickets from Pure Oil Company by an authorized administrator of ScholarWorks at WMU. See the National Digital Catalogue - Science Base Catalogue for more collections submitted by MGRRE.



MGRRE_PureOilScoutTickets_Arms, Maurice A & Flora B; County of Bay_1_21017114540000

API 21017114540000

Permit Number 11454

Lease Name Arms, Maurice A & Flora B; County of Bay

Well Number 1

County Bay

Township 14N

Range 06E

Section 7

2021 DEQ or Pure co_name Yost Energy, Incorporated

Pure Number 218

Latitude 43.6257761

Longitude -83.8057423

WELL REPORT - OUTSIDE OPERATIONS

218

SERIAL NO. _____

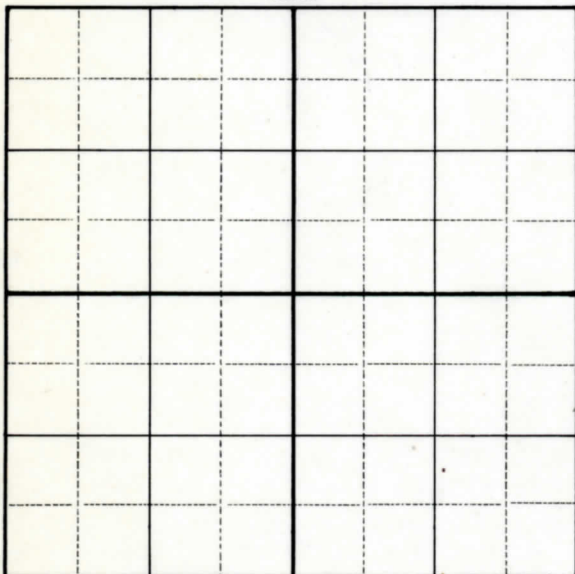
STATE Michigan ~~PSM~~ Bay CO. _____OPERATOR United Drillers & Producers, Inc.FARM M.A. & F.B. Arms-County of Bay WELL NO. 1TWP. Hampton S. 7 T. 14N R. 6ELOC. NE SW SEWILDCAT ☐ FIELD ☐ FIELD NAME _____

MAP NO. _____ CO-ORD. _____ ELEV. _____

STATUS _____

Operator's name changed from:
Roosevelt Oil & Refining Corp.

NORTH

DATE 2-20-50 SCOUT H. J. G.

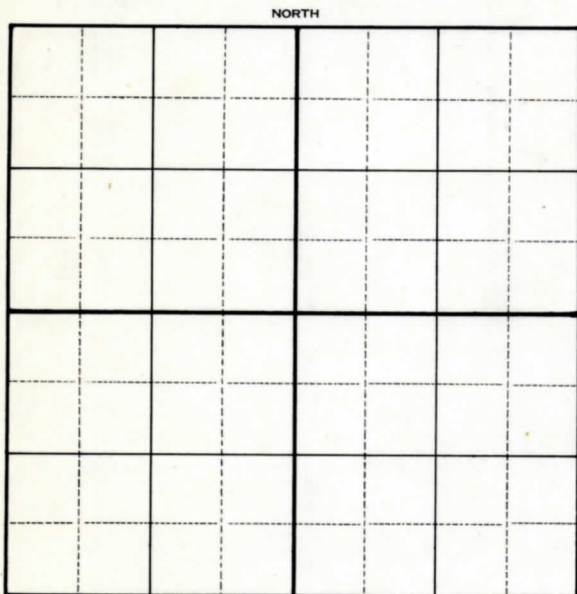
WELL REPORT - OUTSIDE OPERATIONS

SERIAL NO. 218

STATE Michigan ~~XXX~~ ^{PSH} Bay CO.
 OPERATOR Roosevelt Oil & Refining Corp.
 FARM M.A. & F.B. Arms - County of Bay WELL NO. 1
 TWP. Hampton S. 7 T. 14N R. 6E
~~SURVEY~~
 LOC. NE SW SE

WILDCAT ☐ FIELD ☐ FIELD NAME _____
 MAP NO. _____ CO-ORD. _____ ELEV. _____
 STATUS _____

Operator's name changed from:
 Roosevelt Oil Company



DATE 1-3-50 SCOUT H. J. G.

WELL REPORT—OUTSIDE OPERATIONS

Corrected

SERIAL NO. 218

STATE Michigan XXX Bay
CO.

OPERATOR Roosevelt Oil Company

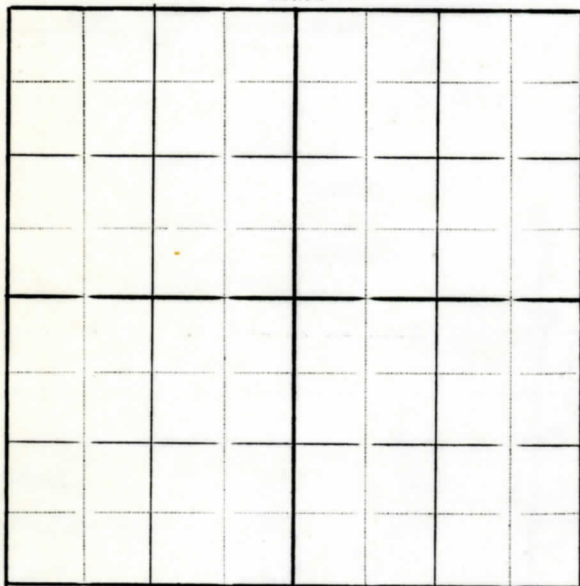
FARM M. A. & F. B. Arms - Bay County of 1
WELL NO.TWP. NE SW SE S. 7 T. 14 N R. 6 E
SUBSECT.

LOC. Hampton

MAP NO. CO-ORD. ELEV.

STATUS Change of operator.

NORTH



DATE 1-24-47 SCOUT H. J. G.

THE PURE OIL COMPANY
LOCATION REPORT

Date April 11, 1945

A.F.E. No. Maurice A. & Flora B. Arms - Co. of Bay

Division Mich. Producing District _____

Lease County of Bay

Acres _____ Lease No. _____ Elevation _____ Well No. 1 (Serial No. 218)

Quadrangle NE SW SE Sec. 7 Twp. 14 N Rge. 6 E Twp. Hampton

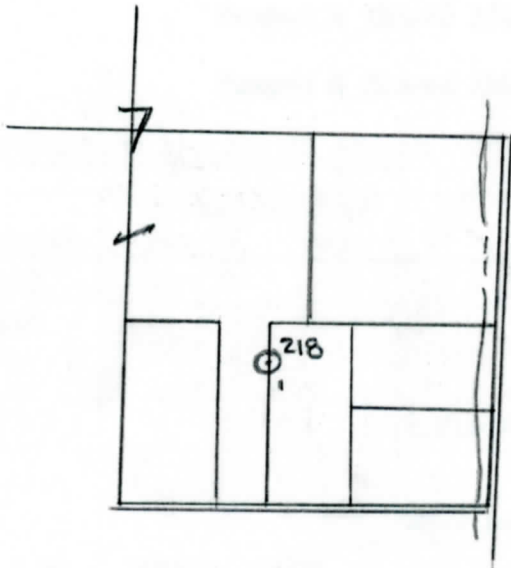
Survey _____ County Bay State Michigan

Operator United Drils. & Prodrs., Inc. - Johnson Oil Co. & O. B. Doran Map Hampton Township, Bay County

330 330 Feet from North Line of Lease
" " East " " "
" " South " " "
" " West " " "
Feet from North Line of Section
" " East " " "
" " South " 1/4 "
" " West " " "

LEGEND

- Location
- ☀ Gas Well
- Oil Well
- ☀ Gas - Distillate Well
- or ○ Dry Hole
- Dry Showing Oil
- ☀ Dry Showing Gas
- Abandoned Location
- ☀ or ☀ Abandoned Gas Well
- or ● Abandoned Oil Well
- or ○ Input Well



Remarks: _____ Scale _____

Submitted by RW Civil Engineer Approved by _____ Division Manager
Approved by _____ Vice-President - General Manager

Signed **D. C. Shackelford**