



Western Michigan University  
ScholarWorks at WMU

---

Legacy Scout Tickets from Pure Oil Company

---

8-20-2021

**MGRRE\_PureOilScoutTickets\_Arms, Maurice A. & Flora  
B.\_8\_21017114820000**

MGRRE  
*Western Michigan University*

Follow this and additional works at: <https://scholarworks.wmich.edu/pure>



Part of the Geology Commons

---

#### **WMU ScholarWorks Citation**

MGRRE, "MGRRE\_PureOilScoutTickets\_Arms, Maurice A. & Flora B.\_8\_21017114820000" (2021). *Legacy Scout Tickets from Pure Oil Company*. 878.  
<https://scholarworks.wmich.edu/pure/878>

This Document is brought to you for free and open access via ScholarWorks at WMU. It has been accepted for inclusion in Legacy Scout Tickets from Pure Oil Company by an authorized administrator of ScholarWorks at WMU. See the National Digital Catalogue - Science Base Catalogue for more collections submitted by MGRRE.



---

**MGRRE\_PureOilScoutTickets\_Arms, Maurice A. & Flora B.\_8\_21017114820000**

API 21017114820000

Permit Number 11482

Lease Name Arms, Maurice A. & Flora B.

Well Number 8

County Bay

Township 14N

Range 05E

Section 12

2021 DEQ or Pure co\_name United Drillers and Production, Incorporated

Pure Number 220

Latitude 43.62936

Longitude -83.81784

## THE PURE OIL COMPANY

## LOCATION REPORT

Date Nov. 18, 1946 A.F.E. No. \_\_\_\_\_

Division Mich. Producing District \_\_\_\_\_ Lease Arms (Maurice A. & Flora B.)

Acres \_\_\_\_\_ Lease No. \_\_\_\_\_ Elevation \_\_\_\_\_ Well No. 8 (Serial No. 220)

Quadrangle C NE NE SE Sec. 12 Twp. 14 N Rge. 5 E Twp. Hampton

Survey \_\_\_\_\_ County Bay State Michigan

Operator United Drillers & Producers, Inc. Map Hampton Township, Bay County

Feet from North Line of Lease

" " East " " "

" " South " " "

" " West " " "

Feet from North Line of Section

" " East " " "

" " South " " "

" " West " " "

## LEGEND

○ Location

☀ Gas Well

● Oil Well

☀ Gas - Distillate Well

○ or ○ Dry Hole

● Dry Showing Oil

☀ Dry Showing Gas

⊗ Abandoned Location

☀ or ☀ Abandoned Gas Well

● or ● Abandoned Oil Well

● or ○ Input Well

Plugged and abandoned 10-10-46.

Total Depth 2892'.

N

Scale \_\_\_\_\_

Remarks: \_\_\_\_\_

Submitted by Scouting Dept.

Approved by \_\_\_\_\_ Division Manager

Approved by \_\_\_\_\_ Vice-President - General Manager

Date April 18, 1945

LOCATION REPORT  
THE PURE OIL COMPANY

A.F.E. No. Maurice A. & Flora B. Arms  
Maurice A. & Flora B. Arms

Division Mich. Producing District \_\_\_\_\_ Lease 8 (Serial No. 220)

Acres \_\_\_\_\_ Lease No. \_\_\_\_\_ Elevation \_\_\_\_\_ Well No. 8 (Serial No. 220)  
Quadrangle C NE NE SE Sec. 12 Twp. 14 N Rge. 5 E Twp. Hampton

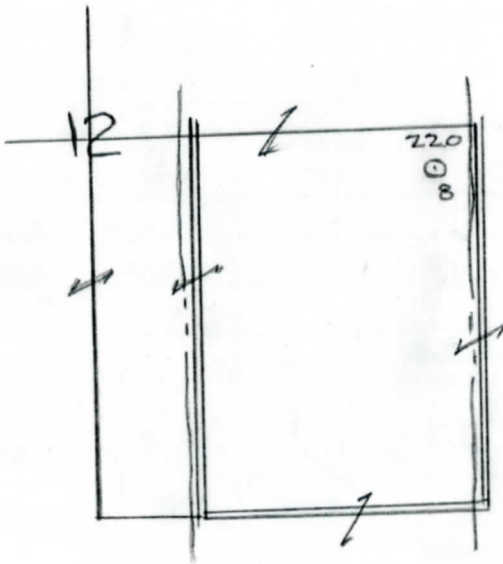
Survey \_\_\_\_\_ County Bay State Michigan  
Operator United Drillers & Producers, Inc. Map Hampton Township, Bay County

1605	1605	Feet from North Line of Lease
	" "	East " " "
	" "	South " " "
2327.96	2327.96	West " " "
330	330	Feet from North Line of Section
330	330	East " " "
	" "	South " " "
	" "	West " " "

LEGEND

- Location
- ☀ Gas Well
- Oil Well
- ☀ Gas - Distillate Well
- or ○ Dry Hole
- Dry Showing Oil
- ☀ Dry Showing Gas
- ⊗ Abandoned Location
- ☀ or ☀ Abandoned Gas Well
- or ● Abandoned Oil Well
- or ○ Input Well

10-10-116



Remarks: \_\_\_\_\_  
Submitted by RW Civil Engineer Approved by \_\_\_\_\_ Division Manager  
Approved by \_\_\_\_\_ Vice-President - General Manager



The Pure Oil Company

## COMPLETION RECORD OF WELLS DRILLED BY OTHER OPERATORS

Michigan Producing Division

Date August 17, 1945

No. 220

State Mich. Co. Bay Twp. Hampton Sec. 12 Twp. 14 N Rge. 5 E

Well No. 8 Serial No. 220 Farm Arms Acres

Operator United Drillers &amp; Producers, Inc.

Date started 6-18-45 Date completed 7-24-45 Elevation 585.7

## PRODUCTION RECORD

1st 24 hours natural Filled up with 1100 ft. Oil and 400 ft. Salt Water.

Date of shot No. of quarts From To From to

Date of acid 8-8-45 No. of gallons 1000

1st 24 hours after acid 120 Barrels (Pumped)

Completed as: Oil Well ☒ Gas Well Dry Hole

## FORMATION AND CASING RECORD

Formation	Top	Bottom	Top Pay	Bottom Pay	Remarks	Casing	
						Size	Set at
Marshall	349	442	(+237)			10"	110
Coldw. Red Rock	1240	1245	(-654)			8-1/4"	665
Sunbury	1459	(-873)				6-5/8"	1613
Berea	1468	(-882)			H.F.S.W. 1540-1545.	5-3/16"	2674
Antrim	1650	(-1064)			(-954)		
Traverse Lime	1976	SIM.	(-1390)	(-2294)			
Dundee	2660	(-2074)	2880	2887	Water (400 ft.) 2888-2892. (-2302)		
Total Depth		2892	(-2306)				
Plugged back:		2888	(-2302)				
			(-2139)				

Remarks Very small show oil 2725-2735 - small show oil 2860. (-2274)  
2656' equals 2660' SIM.

Signed D. C. Shackelford