



Western Michigan University  
ScholarWorks at WMU

---

Legacy Scout Tickets from Pure Oil Company

---

8-20-2021

**MGRRE\_PureOilScoutTickets\_County of Bay,  
Michigan\_2\_21017116380000**

MGRRE  
*Western Michigan University*

Follow this and additional works at: <https://scholarworks.wmich.edu/pure>



Part of the Geology Commons

---

#### WMU ScholarWorks Citation

MGRRE, "MGRRE\_PureOilScoutTickets\_County of Bay, Michigan\_2\_21017116380000" (2021). *Legacy Scout Tickets from Pure Oil Company*. 882.  
<https://scholarworks.wmich.edu/pure/882>

This Document is brought to you for free and open access via ScholarWorks at WMU. It has been accepted for inclusion in Legacy Scout Tickets from Pure Oil Company by an authorized administrator of ScholarWorks at WMU. See the National Digital Catalogue - Science Base Catalogue for more collections submitted by MGRRE.



---

**MGRRE\_PureOilScoutTickets\_County of Bay, Michigan\_2\_21017116380000**

API 21017116380000

Permit Number 11638

Lease Name County of Bay, Michigan

Well Number 2

County Bay

Township 14N

Range 06E

Section 18

2021 DEQ or Pure co\_name Ward, J. F. Engineering Company

Pure Number 224

Latitude 43.61871

Longitude -83.80088

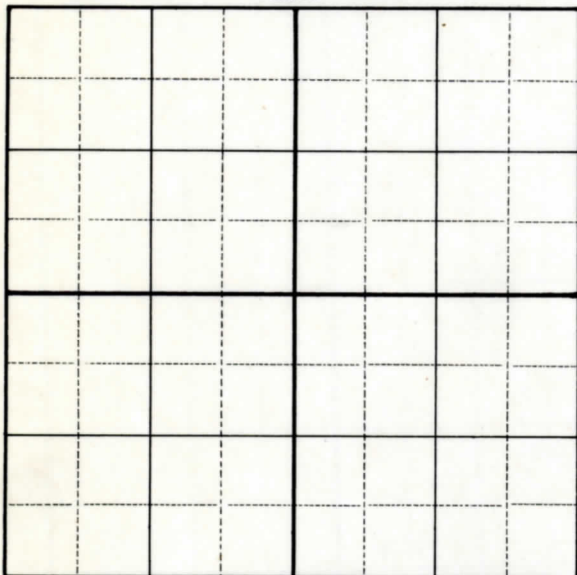
## WELL REPORT - OUTSIDE OPERATIONS

SERIAL NO. 224STATE Michigan ~~XXX~~ CO. BayOPERATOR Ward Engineering Co.FARM County of Bay, Michigan WELL NO. 2TWP. Hampton S. 18 T. 14N R. 6ELOC. NE SE NEWILDCAT ☐ FIELD ☐ FIELD NAME \_\_\_\_\_

MAP NO. \_\_\_\_\_ CO-ORD. \_\_\_\_\_ ELEV. \_\_\_\_\_

STATUS Plugged and Abandoned 3-20-48Total Depth 2910'

NORTH

DATE 4-12-48 SCOUT H. J. G.

STATE Michigan ~~DECK~~ CO. Bay

OPERATOR J. F. Ward Engineering Co.

FARM County of Bay, Michigan WELL NO. 2

TWP ~~3050XX~~ Hampton S. 18 T. 14N R. 6E

LOC. NE SE NE

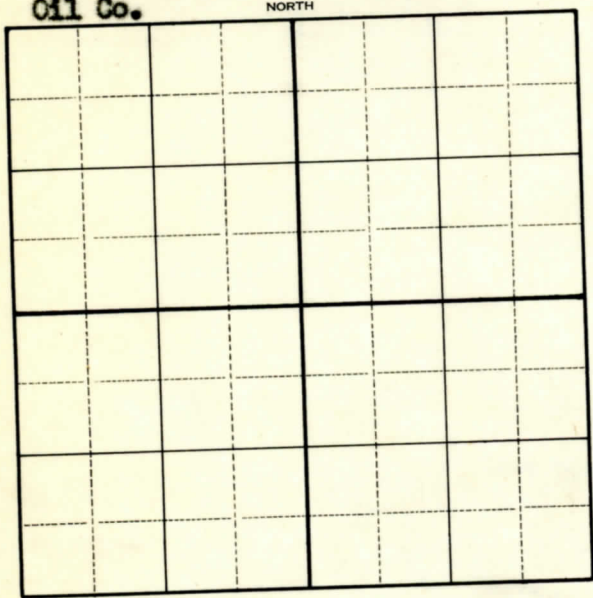
WILDCAT ☐ FIELD ☐ FIELD NAME \_\_\_\_\_

MAP NO. \_\_\_\_\_ CO-ORD. \_\_\_\_\_ ELEV. \_\_\_\_\_

STATUS \_\_\_\_\_

Operator's name changed from:  
Wm. Johnson & O. B. Doran d/b/a Johnson  
Oil Co.

NORTH



DATE 2-9-48 SCOUT H. J. G.

# THE PURE OIL COMPANY

Date July 5, 1945 Corrected LOCATION REPORT A.F.E. No. \_\_\_\_\_  
 Division Mich. Producing District \_\_\_\_\_ Lease County of Bay Michigan  
 Acres \_\_\_\_\_ Lease No. \_\_\_\_\_ Elevation \_\_\_\_\_ Well No. 2 (Serial No. 224)  
 Quadrangle NE SE NE Sec. 18 Twp. 14 N Rge. 6 E ~~BIK~~ ~~OST~~ Twp. Hampton  
 Survey \_\_\_\_\_ County Bay State Michigan  
 Operator Wm. Johnson d/b/a Johnson Oil Co. & C. B. Doran Map Hampton Township, Bay County

Feet from North Line of Lease

" " East " " "

" " South " " "

" " West " " "

Feet from North Line of Section

" " East " " "

" " South " " "

" " West " " "

## LEGEND

○ Location



Gas Well



Oil Well



Gas - Distillate Well



Dry Hole



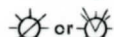
Dry Showing Oil



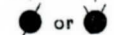
Dry Showing Gas



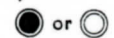
Abandoned Location



Abandoned Gas Well



Abandoned Oil Well



Input Well

See plat - Bay #224.

N



Remarks: Well name correction. Scale \_\_\_\_\_

Submitted by Scouting Dept. Approved by \_\_\_\_\_ Division Manager

Approved by \_\_\_\_\_ Vice-President - General Manager

Date June 27, 1945 LOCATION REPORT A.F.E. No. \_\_\_\_\_  
 Division Mich. Producing District \_\_\_\_\_ Lease County of Bay  
 Acres \_\_\_\_\_ Lease No. \_\_\_\_\_ Elevation \_\_\_\_\_ Well No. 2 (Serial No. 224)  
 Quadrangle NE SE NE Sec. 18 Twp. 14 N Rge. 6 E Twp. Hampton

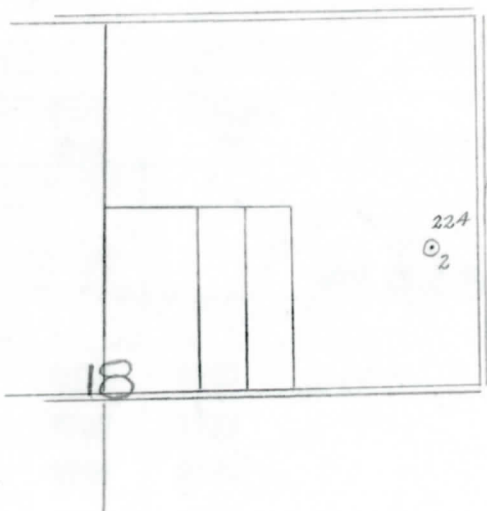
Survey \_\_\_\_\_ County Bay State Michigan  
 Operator Wm. Johnson d/b/a Johnson Oil Co. & C. B. Doran Map Hampton Township, Bay County

		Feet from North Line of Lease					
<u>330</u>	<u>330</u>	"	"	East	"	"	"
<u>990</u>	<u>990</u>	"	"	South	"	"	"
		"	"	West	"	"	"
		Feet from North Line of Section					
<u>330</u>	<u>330</u>	"	"	East	"	<u>1/4</u>	"
<u>990</u>	<u>990</u>	"	"	South	"	"	"
		"	"	West	"	"	"

**LEGEND**

- Gas Well
- Oil Well
- Gas - Distillate Well
- Dry Hole
- Dry Showing Oil
- Location
- Dry Showing Gas
- Abandoned Location
- or Abandoned Gas Well
- or Abandoned Oil Well
- or Input Well

*Handwritten:*  
 350  
 6.77 45  
 10' DP 96



Remarks: \_\_\_\_\_  
 \_\_\_\_\_  
 \_\_\_\_\_

Submitted by \_\_\_\_\_ Civil Engineer  
 Approved by \_\_\_\_\_ Division Manager  
 Approved by \_\_\_\_\_ Vice-President - General Manager



**Michigan Producing Division**

Date August 29, 1945 No. 224  
 State Michigan Co. Bay Twp. Hampton Sec. 18 Twp. 14 N Rge. 6 E  
 Well No. 2 Serial No. 224 Farm County of Bay Acres   
 Operator Wm. Johnson and O. B. Doran  
 Date started 6-22-45 Date completed 7-24-45 Elevation 585.8

**PRODUCTION RECORD**

1st 24 hours natural Show of oil (100 ft. oil in hole in 6 days).  
 Date of shot 8-6-45 No. of quarts 1000 (Traverse)  
 Date of acid 8-2-45 No. of gallons 1000 (Dundee)  
 1st 24 hours after acid Pumped 21 barrels.  
 Completed as: Oil Well X Gas Well  Dry Hole

**FORMATION AND CASING RECORD**

Formation	Top	Bottom	Top Pay	Bottom Pay	Remarks	Casing	
						Size	Set at
Coldw. Red Rock	1260	1265	(-671)			10"	96
Sunbury	1478	(-889)				8-1/4"	700
Berea	1514	(-925)			400 ft. S.W. 1544.	6-5/8"	1643
Antrim	1665	(-1076)			(-955)	5-3/16"	2688
Traverse Lime	2005	(-1416)	2018	2020	(-1429)		
Dundee	2674	S.L.M.	2725	2733	(-2136)		
	(-2084)		2765	2770	(-2176)		
			2785	2795	(-2196)		
Total Depth		2910	(-2321)				

Remarks Perforated 5-3/16" casing with 48 holes from 2016 to 2026. Well producing from both Traverse and Dundee.  
2674' equals 2674' S.L.M.; 2902' equals 2910' S.L.M.

Signed D. C. Shackelford