



Western Michigan University
ScholarWorks at WMU

Legacy Scout Tickets from Pure Oil Company

8-20-2021

MGRRE_PureOilScoutTickets_Anastasia_1_21017116820000

MGRRE

Western Michigan University

Follow this and additional works at: <https://scholarworks.wmich.edu/pure>



Part of the Geology Commons

WMU ScholarWorks Citation

MGRRE, "MGRRE_PureOilScoutTickets_Anastasia_1_21017116820000" (2021). *Legacy Scout Tickets from Pure Oil Company*. 885.

<https://scholarworks.wmich.edu/pure/885>

This Document is brought to you for free and open access via ScholarWorks at WMU. It has been accepted for inclusion in Legacy Scout Tickets from Pure Oil Company by an authorized administrator of ScholarWorks at WMU. See the National Digital Catalogue - Science Base Catalogue for more collections submitted by MGRRE.



MGRRE_PureOilScoutTickets_Anastasia_1_21017116820000

API 21017116820000

Permit Number 11682

Lease Name Anastasia

Well Number 1

County Bay

Township 14N

Range 06E

Section 16

2021 DEQ or Pure co_name Gulf Refining Company and EPD

Pure Number 227

Latitude 43.62065

Longitude -83.76862

THE PURE OIL COMPANY

LOCATION REPORT

Date February 20, 1946 A.F.E. No. _____
 Division Mich. Producing District _____ Lease Anastasia
 Acres _____ Lease No. _____ Elevation _____ Well No. 1 (Serial No. 227)
 Quadrangle SW-NW-NE Sec. 16 Twp. 14 N Rge. 6 E Twp. Hampton
 Survey _____ County Bay State Michigan
 Operator Gulf Refining Co. Map Hampton Township, Bay County

Feet from North Line of Lease

330 330 " " East " " "
330 330 " " South " " "

990 990 " " West " " "
 Feet from North Line of Section

" " East " " "
330 330 " " South " " "

" " West " " "

LEGEND

○ Location



Gas Well



Oil Well



Gas-Distillate Well



Dry Hole



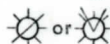
Dry Showing Oil



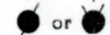
Dry Showing Gas



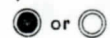
Abandoned Location



Abandoned Gas Well



Abandoned Oil Well



Input Well

Old well being deepened.
 OLD WELL BEING DEEPEMED.

N

Scale _____

Remarks: _____

Submitted by CB Civil Engineer Approved by _____ Division Manager

Approved by _____ Vice-President - General Manager

Date September 30, 1945LOCATION REPORT
THE PURE OIL COMPANY

A.F.E. No. _____

Date July 18, 1945

LOCATION REPORT

A.F.E. No. _____

Division Mich. Producing

District _____

Lease Anastasia

Acres _____ Lease No. _____

Elevation _____

Well No. 1 (Serial No. 227)Quadrangle SW NW NESec. 16Twp. 14 NRge. 6 ETwp. HamptonSurvey _____ County BayState MichiganOperator Gulf Refining Co.Map Hampton Twp, Bay Co.

		Feet from North Line of Lease
	" "	East " " "
<u>330</u>	<u>330</u>	" " South " " "
<u>330</u>	<u>330</u>	" " West " <u>1/4</u> "
<u>990</u>	<u>990</u>	Feet from North Line of Section
	" "	East " " "
	" "	South " " "
<u>330</u>	<u>330</u>	" " West " " "

LEGEND

○ Location

☀ Gas Well

● Oil Well

☀ Gas - Distillate Well

○ or ○ Dry Hole

● Dry Showing Oil

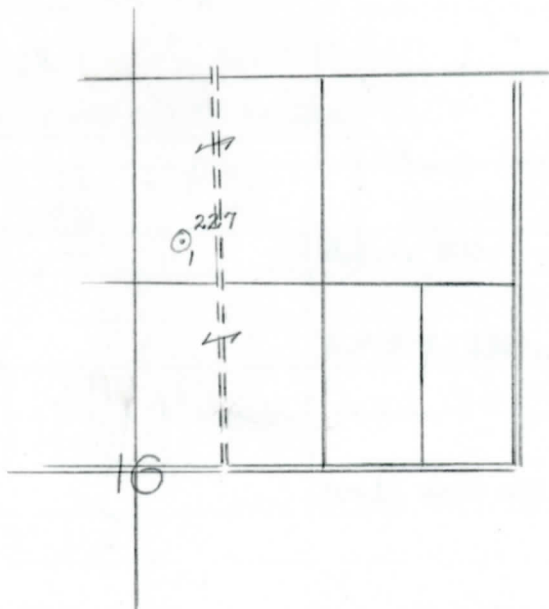
☀ Dry Showing Gas

○ Abandoned Location

☀ or ☀ Abandoned Gas Well

● or ● Abandoned Oil Well

● or ○ Input Well



Scale _____

Remarks: _____

Submitted by _____

Civil Engineer

Approved by _____

Division Manager

Approved by _____

Vice-President - General Manager

V.F.F. MO

Michigan Producing Division

No. 227

XXXXXX.

Operator Gulf Refining Company

Date started 7-21-45 Date completed 8-28-45 Elevation 585.8

1st 24 hours natural Show of Oil.[illegible]

Date of acid 9-6-45 No. of gallons 500

1st 24 hours after acid Pumped 3 Bbls.

Completed as: Oil Well **X** Gas Well Dry Hole

[illegible]

Remarks Well has been temporarily abandoned as a producer but not plugged.
1551' equals 1529' SLM; 2665' equals 2655' SLM.

Signed **D. C. Shackelford**

D. C. Shackelford