



Western Michigan University  
ScholarWorks at WMU

---

Legacy Scout Tickets from Pure Oil Company

---

8-20-2021

## MGRRE\_PureOilScoutTickets\_Unitized Tract New York Central Railroad\_1\_21017090980000

MGRRE

*Western Michigan University*

Follow this and additional works at: <https://scholarworks.wmich.edu/pure>



Part of the Geology Commons

---

### WMU ScholarWorks Citation

MGRRE, "MGRRE\_PureOilScoutTickets\_Unitized Tract New York Central Railroad\_1\_21017090980000" (2021). *Legacy Scout Tickets from Pure Oil Company*. 886.  
<https://scholarworks.wmich.edu/pure/886>

This Document is brought to you for free and open access via ScholarWorks at WMU. It has been accepted for inclusion in Legacy Scout Tickets from Pure Oil Company by an authorized administrator of ScholarWorks at WMU. See the National Digital Catalogue - Science Base Catalogue for more collections submitted by MGRRE.



---

**MGRRE\_PureOilScoutTickets\_Unitized Tract New York Central  
Railroad\_1\_21017090980000**

API 21017090980000

Permit Number 9098

Lease Name Unitized Tract New York Central Railroad

Well Number 1

County Bay

Township 15N

Range 04E

Section 36

2021 DEQ or Pure co\_name Muskegon Development Company

Pure Number 228

Latitude 43.6612141

Longitude -83.9479513

# THE PURE OIL COMPANY LOCATION REPORT

Date July 18, 1945

A.F.E. No. \_\_\_\_\_

Division Mich. Producing District \_\_\_\_\_

Lease Unitized Tract R.R. Co et al  
New York Central R.R. Co., et al

Acres \_\_\_\_\_ Lease No. \_\_\_\_\_ Elevation \_\_\_\_\_ Well No. 1 (Serial No. 228)

Quadrangle C S 1/2 SW NW Sec. 36 Twp. 15 N Rge. 4 E Twp. Kawkawlin

Survey \_\_\_\_\_ County Bay State Michigan

Operator L. C. MacGregor Map Kawkawlin Twp., Bay Co  
Kawkawlin Township, Bay County

Feet from North Line of Lease

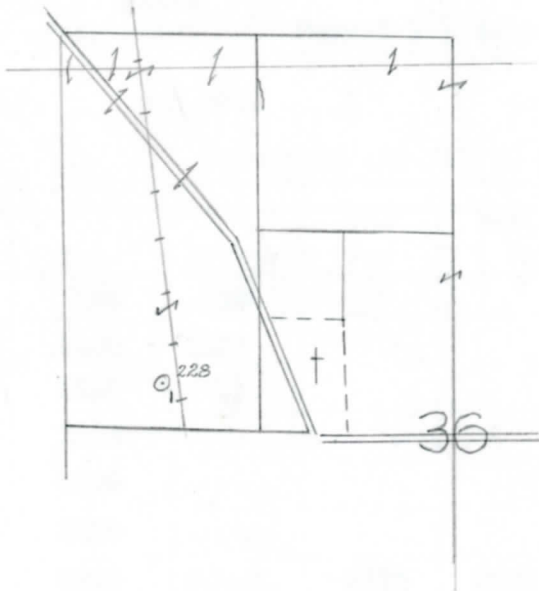
330	330	East	"	"
660	660	South	"	"
		West	"	"

Feet from North Line of Section

330	330	East	"	"
660	660	South	"	<u>1/4</u>
		West	"	"

### LEGEND

- ☉ Gas Well
- Oil Well
- ☼ Gas - Distillate Well
- ∅ or ○ Dry Hole
- Dry Showing Oil
- Location
- ☉ Dry Showing Gas
- ⊗ Abandoned Location
- ☼ or ☼ Abandoned Gas Well
- or ● Abandoned Oil Well
- or ○ Input Well



Remarks: \_\_\_\_\_ Scale \_\_\_\_\_

Submitted by \_\_\_\_\_  
Civil Engineer

Approved by \_\_\_\_\_  
Division Manager

Approved by \_\_\_\_\_  
Vice-President - General Manager

LOCATION REPORT

Date - 21st TR' 1945

COMPLETION RECORD OF WELLS DRILLED BY OTHER OPERATORS

Michigan Producing Division

Date August 29, 1945 No. 228  
 State Mich. Co. Bay Twp. Kawkawlin Sec. 36 Twp. 15 N Rge. 4 E  
 Well No. 1 Serial No. 228 Farm Unitized Tract -  
New York Central R.R., Acres  
et al  
 Operator L. C. MacGregor  
 Date started 7-12-45 Date completed 8-16-45 Elevation 604.4

PRODUCTION RECORD

1st 24 hours natural Filled up 1000 ft.  
 Date of shot No. of quarts From To From to  
 Date of acid 8-20-45 No. of gallons 500  
 1st 24 hours after acid Pumped 107 barrels.  
 Completed as: Oil Well X Gas Well Dry Hole

FORMATION AND CASING RECORD

Formation	Top	Bottom	Top Pay	Bottom Pay	Remarks	Casing	
						Size	Set at
Marshall	120	230	(+184)		H.F.W. 130. (4474)	10"	103
Coldw. Red Rock	1400	1405	(-796)			8-1/4"	778
Sunbury	1540	(-936)				6-5/8"	1770
Berea	1565	(-961)			H.F.S.W. 1640-1670. (-1036)	5-3/16"	2806
Antrim	1760	(-1156)					
Traverse Lime	2090	(-1486)					
Dundee	2790	S.L.M.	2856	2880	(-2252)		
	(-2186)		2898	2928	(-2294)		
Total Depth		2932	(-2329)				

Remarks

Signed D. G. Shackelford