



Western Michigan University
ScholarWorks at WMU

Legacy Scout Tickets from Pure Oil Company

8-20-2021

MGRRE_PureOilScoutTickets_Vanderbrink, J._1_21017117720000

MGRRE

Western Michigan University

Follow this and additional works at: <https://scholarworks.wmich.edu/pure>



Part of the Geology Commons

WMU ScholarWorks Citation

MGRRE, "MGRRE_PureOilScoutTickets_Vanderbrink, J._1_21017117720000" (2021). *Legacy Scout Tickets from Pure Oil Company*. 892.

<https://scholarworks.wmich.edu/pure/892>

This Document is brought to you for free and open access via ScholarWorks at WMU. It has been accepted for inclusion in Legacy Scout Tickets from Pure Oil Company by an authorized administrator of ScholarWorks at WMU. See the National Digital Catalogue - Science Base Catalogue for more collections submitted by MGRRE.



MGRRE_PureOilScoutTickets_Vanderbrink, J._1_21017117720000

API 21017117720000

Permit Number 11772

Lease Name Vanderbrink, J.

Well Number 1

County Bay

Township 16N

Range 03E

Section 33

2021 DEQ or Pure co_name Hilliard, Eugene and Fox Kenneth A

Pure Number 234

Latitude 43.7479

Longitude -84.121

THE PURE OIL COMPANY LOCATION REPORT

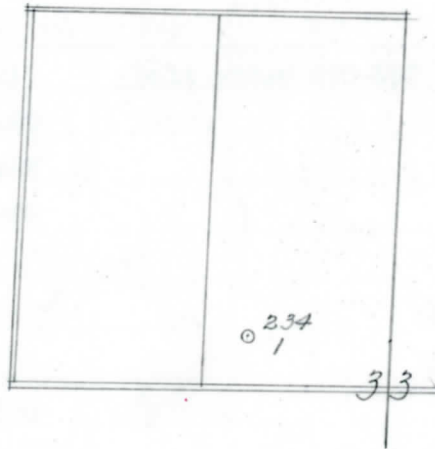
Date August 22, 1945 A.F.E. No. _____
 Division Mich. Producing District _____ Lease J. Vanderbrink
 Acres _____ Lease No. _____ Elevation _____ Well No. 1 (Serial No. 234)
 Quadrangle SW SE NW Sec. 33 Twp. 16 N Rge. 3 E Twp. GARFIELD
SW SE NW Sec. 33 Twp. 16 N Rge. 3 E Twp. Garfield
 Survey _____ County Bay State Michigan
 Operator Eugene Hilliard & Kenneth A. Fox Map Garfield Township, Bay County
990 990 Feet from North Line of Lease

_____ " " East " " "
 _____ " " South " " "
330 330 " " West " " "
 _____ Feet from North Line of Section
990 990 " " East " " 1/4
330 330 " " South " " "
 _____ " " West " " "

Loe

LEGEND

- Location
- ☀ Gas Well
- Oil Well
- ☀ Gas - Distillate Well
- ∅ or ○ Dry Hole
- Dry Showing Oil
- ☀ Dry Showing Gas
- ⊗ Abandoned Location
- ☀ or ☀ Abandoned Gas Well
- or ● Abandoned Oil Well
- or ○ Input Well



Remarks: _____

Scale _____

Submitted by _____ Civil Engineer Approved by _____ Division Manager
 Approved by _____ Vice-President - General Manager

COMPLETION RECORD OF WELLS DRILLED BY OTHER OPERATORS

Michigan Producing Division

Date October 24, 1945 No. 234
 State Mich. Co. Bay Twp. Garfield Sec. 33 Twp. 16 N Rge. 3 E
 Well No. 1 Serial No. 234 Farm J. Vanderbrink Acres _____
 Operator E. Hilliard and K. A. Fox
 Date started 8-29-45 Date completed 10-13-45 Elevation 640.9

PRODUCTION RECORD

1st 24 hours natural
 Date of shot _____ No. of quarts _____ From _____ To _____ From _____ to _____
 Date of acid _____ No. of gallons _____ shot _____
 1st 24 hours after acid _____
 Completed as: Oil Well _____ Gas Well _____ Dry Hole X

FORMATION AND CASING RECORD

Formation	Top	Bottom	Top Pay	Bottom Pay	Remarks	Casing	
						Size	Set at
Marshall (-209)	850	1015	Salt water 850-857 (-209)			10"	132
Red Rock	1075	1125	(-434)			8-1/4"	796 out
" "	1180	1248				8-1/4"	1020
" "	1957	1980				6-5/8"	2115
Sunbury	2028	(-1387)					
Berea	2049 SLM	(-1408)			200 ft. S.W. 2105' (1464) H.F.S.W. 2125'-2137' (-1484)		
Antrim	2231	2600	(-1590)				
Trav. Lime	2615 CTM	(-1974)					
Dundee	3341 SLM	(-2700)			200 ft. S.W. - 10 hrs. - 3528' (-2887)		
Total Depth		3542	(-2901)				

Remarks
 2068 equals 58 SLM

Signed D. C. Shackelford