



Western Michigan University
ScholarWorks at WMU

Legacy Scout Tickets from Pure Oil Company

8-20-2021

**MGRRE_PureOilScoutTickets_Ruegsegger,
Fred_4_21017120170000**

MGRRE
Western Michigan University

Follow this and additional works at: <https://scholarworks.wmich.edu/pure>



Part of the Geology Commons

WMU ScholarWorks Citation

MGRRE, "MGRRE_PureOilScoutTickets_Ruegsegger, Fred_4_21017120170000" (2021). *Legacy Scout Tickets from Pure Oil Company*. 901.
<https://scholarworks.wmich.edu/pure/901>

This Document is brought to you for free and open access via ScholarWorks at WMU. It has been accepted for inclusion in Legacy Scout Tickets from Pure Oil Company by an authorized administrator of ScholarWorks at WMU. See the National Digital Catalogue - Science Base Catalogue for more collections submitted by MGRRE.



MGRRE_PureOilScoutTickets_Ruegsegger, Fred_4_21017120170000

API 21017120170000

Permit Number 12017

Lease Name Ruegsegger, Fred

Well Number 4

County Bay

Township 14N

Range 04E

Section 3

2021 DEQ or Pure co_name Muskegon Development Company

Pure Number 243

Latitude 43.6478043

Longitude -83.9806198

The Pure Oil Company

THE PURE OIL COMPANY

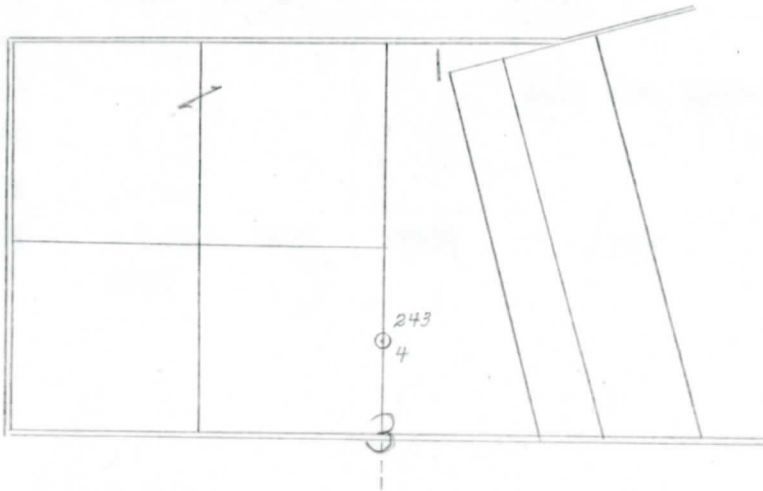
LOCATION REPORT

Date Dec. 5, 1945 A.F.E. No. Fred Ruegsegger
 Division Mich. Producing District _____ Lease Fred Ruegsegger
 Acres _____ Lease No. _____ Elevation _____ Well No. 4 (Serial No. 243)
 Quadrangle C 3 1/2 N 1/2 Sec. 3 Twp. 14 N Rge. 4 E ~~X DIST~~ ~~X DIST~~ Monitor
 Survey _____ County Bay State Michigan
 Operator Chapman Oil Co. Map Monitor Township, Bay County

Feet from North Line of Lease	
<u>1320</u>	<u>1320</u>
" " East " " "	" " East " " "
<u>654</u>	<u>654</u>
" " South " " "	" " South " " "
" " West " " "	" " West " " "
Feet from North Line of Section	
<u>0</u>	<u>0</u>
" " East " <u>1/4</u> "	" " East " <u>1/4</u> "
<u>654</u>	<u>654</u>
" " South " " "	" " South " " "
<u>0</u>	<u>0</u>
" " West " " "	" " West " " "

LEGEND

- Location
- ☀ Gas Well
- Oil Well
- ☀ Gas - Distillate Well
- or ○ Dry Hole
- Dry Showing Oil
- ☀ Dry Showing Gas
- ⊗ Abandoned Location
- ☀ or ☀ Abandoned Gas Well
- or ● Abandoned Oil Well
- or ○ Input Well



Remarks: _____

Scale _____

Submitted by CB Civil Engineer Approved by _____ Division Manager
 Approved by _____ Vice-President - General Manager

COMPLETION RECORD OF WELLS DRILLED BY OTHER OPERATORS

Michigan Producing Division

Date February 20, 1946 No. 243
 State Mich. County Bay ~~Rxxx.~~ Twp. Monitor Sec. 3 Twp. 14 N Rge. 4 E
 Well No. 4 (~~23233333~~) 243 Farm Fred Ruegsegger Acres _____
 Operator Chapman Oil Company Information secured ~~Rxxx~~ By Scouting Department
 Date well started 12-9-45 Date well completed 1-30-46 Elevation 598.7

PRODUCTION BOARD

1st 24 hours natural Filled up 1500 ft.
 2nd 24 hours natural _____
 Date of shot _____ No. of quarts _____ From _____ To _____ From _____ to _____
 Date of acid 2-14-46 No. of gallons 2800
16 ~~24~~ hours after acid shot Pumped 80 Barrels
 2nd 24 hours after acid _____

FORMATION AND CASING RECORD

OIL WELL

Formation	Top	Bottom	Top Pay	Bottom Pay	Remarks	Casing	
						Size	Set at
Coldw. Red Rock	1430	1435	(-831)			10"	101
Sunbury	1545	(-946)				8-1/4"	756
Berea	1565	(-964)			Salt wtr. 1565-1570.	6-5/8"	1756
Antrim	1760	(-1161)			(-966)	5-3/16"	2799
Traverse Lime	2075	(-1474)					
Dundee (-289)	2788	S.L.M.	2895	2930	(-2296)		
Total Depth		2932	(-2333)				

Remarks 2784' equals 2774' S.L.M.

Signed D. C. Shackelford