



Western Michigan University
ScholarWorks at WMU

Legacy Scout Tickets from Pure Oil Company

8-20-2021

MGRRE_PureOilScoutTickets_Fritsch, Rufus_1_21017120330000

MGRRE

Western Michigan University

Follow this and additional works at: <https://scholarworks.wmich.edu/pure>



Part of the Geology Commons

WMU ScholarWorks Citation

MGRRE, "MGRRE_PureOilScoutTickets_Fritsch, Rufus_1_21017120330000" (2021). *Legacy Scout Tickets from Pure Oil Company*. 902.

<https://scholarworks.wmich.edu/pure/902>

This Document is brought to you for free and open access via ScholarWorks at WMU. It has been accepted for inclusion in Legacy Scout Tickets from Pure Oil Company by an authorized administrator of ScholarWorks at WMU. See the National Digital Catalogue - Science Base Catalogue for more collections submitted by MGRRE.



MGRRE_PureOilScoutTickets_Fritsch, Rufus_1_21017120330000

API 21017120330000

Permit Number 12033

Lease Name Fritsch, Rufus

Well Number 1

County Bay

Township 14N

Range 06E

Section 15

2021 DEQ or Pure co_name Summit Essexville, Incorporated

Pure Number 244

Latitude 43.6133497

Longitude -83.7582517

THE PURE OIL COMPANY LOCATION REPORT

Date December 12, 1945 A.F.E. No. _____
 Division Mich. Producing District _____ Lease Rufus Fritsch
 Acres _____ Lease No. _____ Elevation _____ Well No. 1 (Serial No. 244)
 Quadrangle SW-NW-SW Sec. 15 Twp. 14 N Rge. 6 E ~~X 6 N~~ ~~X 6 W~~ Twp. Hampton
 Survey _____ County Bay State Michigan
 Operator Gulf Refining Company Map Hampton Township, Bay County

Feet from North Line of Lease

330 330 " " East " " "

430 430 " " South " " "

990 990 " " West " " "

Feet from North Line of Section

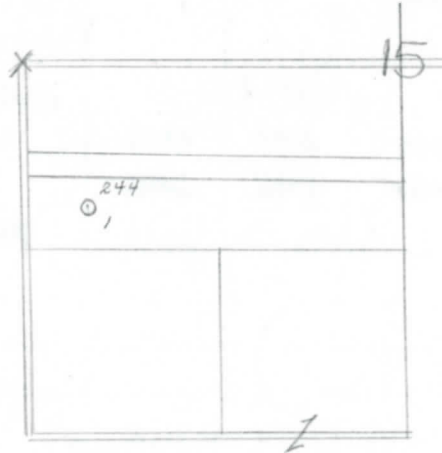
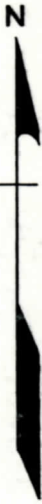
" " East " " "

" " South " " "

430 430 " " West " " "

LEGEND

- ☀ Gas Well
- Oil Well
- ☀ Gas - Distillate Well
- ∅ or ○ Dry Hole
- Dry Showing Oil
- Location
- ☀ Dry Showing Gas
- ⊗ Abandoned Location
- ☀ or ⊗ Abandoned Gas Well
- or ● Abandoned Oil Well
- or ○ Input Well



Scale _____

Remarks: _____

Submitted by UB Civil Engineer Approved by _____ Division Manager
 Approved by _____ Vice-President - General Manager

COMPLETION RECORD OF WELLS DRILLED BY OTHER OPERATORS

Michigan Producing Division

Date **February 13, 1946** No. **244**
 State **Mich.** County **Bay** ~~Xxxxx~~ Twp. **Hampton** Sec. **15** Twp. **14 N** Rge. **6 E**
 (Serial No.)
 Well No. **1** ~~(xxxxxx)~~ **244** Farm **Rufus Fritsch** Acres
 Operator **Gulf Refining Company** Information secured ~~xxxx~~ By **Scouting Department**
 Date well started **12-21-45** Date well completed **1-30-46** Elevation **537.4**

PRODUCTION BOARD

1st 24 hours natural **1500 ft. Oil in hole.**
 2nd 24 hours natural
 Date of shot No. of quarts From To From to
 Date of acid **2-5-46** No. of gallons **500**
16 ~~xxxx~~
 1st ~~24~~ hours after acid **Pumped 167 Bbls.**
 shot
 2nd 24 hours after acid

OIL WELL

FORMATION AND CASING RECORD

Formation	Top	Bottom	Top Pay	Bottom Pay	Remarks	Casing	
						Size	Set at
Sunbury	1450	S.L.M.	(-863)		H.F.W. 175. (+412)	10"	94
Berea	1480	(-893)			Salt water 1510-20.	8-1/4"	654
Antrim	1665	(-1075)			(-923)	6-5/8"	1662
Traverse Lime (+438)	2025	S.L.M.	(-2266)			5-3/16"	2676
Dundee (-2076)	2663	"	2853	2864	Small show oil 2729-2736. (-2142)		
			2881	2883	Show oil 2840. (-2253)		
Total Depth		2889	(-2302)	(-2294)			

Remarks **1535' eq. 1535' SLM; 2006' eq. 1986' SLM.**

Signed **D. C. Shackelford**