



Western Michigan University
ScholarWorks at WMU

Legacy Scout Tickets from Pure Oil Company

8-20-2021

MGRRE_PureOilScoutTickets_Richter, Otto_2_21017120340000

MGRRE

Western Michigan University

Follow this and additional works at: <https://scholarworks.wmich.edu/pure>



Part of the Geology Commons

WMU ScholarWorks Citation

MGRRE, "MGRRE_PureOilScoutTickets_Richter, Otto_2_21017120340000" (2021). *Legacy Scout Tickets from Pure Oil Company*. 903.

<https://scholarworks.wmich.edu/pure/903>

This Document is brought to you for free and open access via ScholarWorks at WMU. It has been accepted for inclusion in Legacy Scout Tickets from Pure Oil Company by an authorized administrator of ScholarWorks at WMU. See the National Digital Catalogue - Science Base Catalogue for more collections submitted by MGRRE.



MGRRE_PureOilScoutTickets_Richter, Otto_2_21017120340000

API 21017120340000

Permit Number 12034

Lease Name Richter, Otto

Well Number 2

County Bay

Township 15N

Range 04E

Section 36

2021 DEQ or Pure co_name Muskegon Development Company

Pure Number 245

Latitude 43.6556545

Longitude -83.9482033

THE PURE OIL COMPANY

LOCATION REPORT

Date December 12, 1945 A.F.E. No. _____

Division Mich. Producing District _____ Lease Otto Richter

Acres _____ Lease No. _____ Elevation _____ Well No. 2 (Serial No. 245)

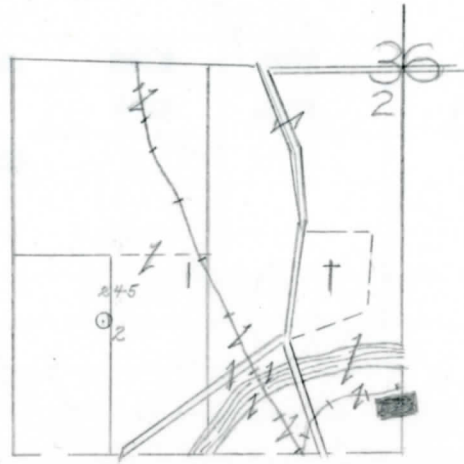
Quadrangle N $\frac{1}{2}$ SW SW Sec. 36 Twp. 15 N Rge. 4 E Twp. Kawkawlin

Survey _____ County Bay State Michigan

Operator Gulf Refining Company Map Kawkawlin Township, Bay County

Feet from North Line of Lease	
940	940
580	580
Feet from North Line of Section	
940	940
580	580

- LEGEND**
- Location
 - ☀ Gas Well
 - Oil Well
 - ☀ Gas - Distillate Well
 - or ○ Dry Hole
 - Dry Showing Oil
 - ☀ Dry Showing Gas
 - ⊗ Abandoned Location
 - ☀ or ☀ Abandoned Gas Well
 - or ● Abandoned Oil Well
 - or ○ Input Well



Scale _____

Remarks: _____

Submitted by CB Civil Engineer Approved by _____ Division Manager
Approved by _____ Vice-President - General Manager

COMPLETION RECORD OF WELLS DRILLED BY OTHER OPERATORS

Michigan Producing Division

Date **February 28, 1946** No. **245**
 State **Michigan** Co. **Bay** ~~XXXX~~ Twp. **Kawkawlin** Sec. **36** Twp. **15 N** Rge. **4 E**
 Well No. **2** Serial No. **245** Farm **Otto Richter** Acres _____
 Operator **Gulf Refining Company**
 Date started **12-14-45** Date completed **1-26-46** Elevation **598.2**

PRODUCTION RECORD

1st 24 hours natural **Filled up 2000 ft.**
 Date of shot _____ No. of quarts _____ From _____ To _____ From _____ to _____
 Date of acid **2-12-46** No. of gallons **500**
 1st 24 hours after acid ~~XXXX~~ **Pumped 70 Bbls.**
 Completed as: Oil Well **X** Gas Well _____ Dry Hole _____

FORMATION AND CASING RECORD

Formation	Top	Bottom	Top Pay	Bottom Pay	Remarks	Casing	
						Size	Set at
Sunbury	1505	SLM.	(-907)			10"	110
Berea	1535	(-937)			Salt water 1655-70.	8-1/4"	750
Antrim	1710	(-1112)			(-1055)	5-3/16"	2790
Traverse Lime	2085	(-1487)					
Dundee (-2181)	2779	SLM.	2862	2867	(-2264)		
			2897	2902	(-2299)		
Total Depth		2921	(-2323)				

Remarks **1535' equals 1562' SLM.**

Signed **D. C. Shackelford**