



Western Michigan University  
ScholarWorks at WMU

---

Legacy Scout Tickets from Pure Oil Company

---

8-20-2021

**MGRRE\_PureOilScoutTickets\_Kaczmarek,  
Agnes\_1\_21017120440000**

MGRRE  
*Western Michigan University*

Follow this and additional works at: <https://scholarworks.wmich.edu/pure>



Part of the Geology Commons

---

#### **WMU ScholarWorks Citation**

MGRRE, "MGRRE\_PureOilScoutTickets\_Kaczmarek, Agnes\_1\_21017120440000" (2021). *Legacy Scout Tickets from Pure Oil Company*. 904.  
<https://scholarworks.wmich.edu/pure/904>

This Document is brought to you for free and open access via ScholarWorks at WMU. It has been accepted for inclusion in Legacy Scout Tickets from Pure Oil Company by an authorized administrator of ScholarWorks at WMU. See the National Digital Catalogue - Science Base Catalogue for more collections submitted by MGRRE.



---

**MGRRE\_PureOilScoutTickets\_Kaczmarek, Agnes\_1\_21017120440000**

API 21017120440000

Permit Number 12044

Lease Name Kaczmarek, Agnes

Well Number 1

County Bay

Township 14N

Range 06E

Section 17

2021 DEQ or Pure co\_name Gulf Refining Company and EPD

Pure Number 246

Latitude 43.62056

Longitude -83.78849

THE PURE OIL COMPANY

LOCATION REPORT

Date December 26, 1945

A.F.E. No. \_\_\_\_\_

Agnes Kaczmarek

Division Mich. Producing District \_\_\_\_\_

Lease Agnes Kaczmarek

Acres \_\_\_\_\_ Lease No. \_\_\_\_\_ Elevation \_\_\_\_\_ Well No. 1 (Serial No. 246)

Quadrangle SW - NW - NE Sec. 17 Twp. 14 N Rge. 6 E ~~X Dist.~~ Hampton

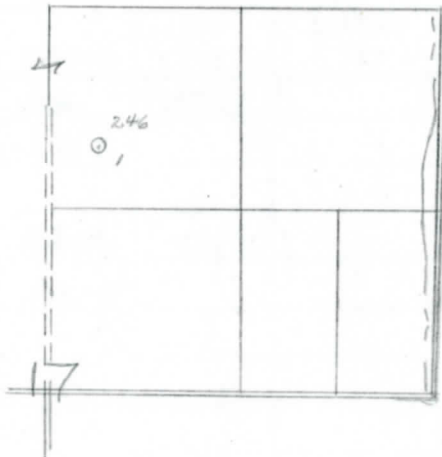
Survey \_\_\_\_\_ County Bay State Michigan

Operator Gulf Ref. Co. Gulf Refining Company Map Hampton Township, Bay County

Feet from North Line of Lease					
_____	_____	"	"	East	" " "
<u>330</u>	<u>330</u>	"	"	South	" " "
<u>330</u>	<u>330</u>	"	"	West	" " "
<u>990</u>	<u>990</u>	Feet from North Line of Section			
_____	_____	"	"	East	" " "
_____	_____	"	"	South	" " "
<u>330</u>	<u>330</u>	"	"	West	" " "

LEGEND

- Location
- ☀ Gas Well
- Oil Well
- ☀ Gas - Distillate Well
- ∅ or ○ Dry Hole
- Dry Showing Oil
- ☀ Dry Showing Gas
- ⊖ Abandoned Location
- ☀ or ☀ Abandoned Gas Well
- or ● Abandoned Oil Well
- or ○ Input Well



Scale \_\_\_\_\_

Remarks: \_\_\_\_\_  
\_\_\_\_\_  
\_\_\_\_\_

Submitted by CB \_\_\_\_\_  
Civil Engineer

Approved by \_\_\_\_\_  
Division Manager

Approved by \_\_\_\_\_  
Vice-President - General Manager

## COMPLETION RECORD OF WELLS DRILLED BY OTHER OPERATORS

Michigan Producing Division

Date March 6, 1946 No. 246  
 State Michigan Co. Bay Twp. Hampton Sec. 17 Twp. 14 N Rge. 6 E  
 Well No. 1 Serial No. 246 Farm Agnes Kaczmarek Acres \_\_\_\_\_  
 Operator Gulf Refining Company  
 Date started 12-27-45 Date completed 2-26-46 Elevation 583.5

## PRODUCTION RECORD

1st 24 hours natural  
 Date of shot \_\_\_\_\_ No. of quarts \_\_\_\_\_ From \_\_\_\_\_ To \_\_\_\_\_ From \_\_\_\_\_ to \_\_\_\_\_  
 Date of acid 2-10-46 No. of gallons 300  
 1st 24 hours after acid See below.  
 Completed as: Oil Well \_\_\_\_\_ Gas Well \_\_\_\_\_ Dry Hole X

## FORMATION AND CASING RECORD

Formation	Top	Bottom	Top Pay	Bottom Pay	Remarks	Casing	
						Size	Set at
Sunbury	1454	SLM.	(-866)			10"	93
Berea	1479	(-891)			H.F.S.W. 1525.	8-1/4"	685
Antrim	?				(-937)	6-5/8"	1655
Traverse Lime	1974	S.L.M.	(-1386)			5-3/16"	2664
Dundee	2650	(-2062)			Small show oil 2715-2718.		(-2127)
					Show oil 2742-2769.		(-2154)
					" " 2824-2830.		(-2236)
					1 ba. salt water per hour 2918-2920.		(-2330)
Total Depth		2939	(-2351)				

Remarks Production after acid at depth 2918: 2-10-46 pumped 7 bbls.; 2-11-46 pumped 19 bbls. oil & 19 bbls. salt water; 2-12-46 pumped 6 bbls. oil & 20 bbls. salt water; 2-13-46 pumped 3 bbls. oil & 24 bbls. salt water. No increase in salt water below 2820'.  
 2670' equals 2664' SLM.

 Signed D. C. Shackelford