



Western Michigan University
ScholarWorks at WMU

Legacy Scout Tickets from Pure Oil Company

8-20-2021

MGRRE_PureOilScoutTickets_Irma_1_21017120450000

MGRRE

Western Michigan University

Follow this and additional works at: <https://scholarworks.wmich.edu/pure>



Part of the Geology Commons

WMU ScholarWorks Citation

MGRRE, "MGRRE_PureOilScoutTickets_Irma_1_21017120450000" (2021). *Legacy Scout Tickets from Pure Oil Company*. 905.

<https://scholarworks.wmich.edu/pure/905>

This Document is brought to you for free and open access via ScholarWorks at WMU. It has been accepted for inclusion in Legacy Scout Tickets from Pure Oil Company by an authorized administrator of ScholarWorks at WMU. See the National Digital Catalogue - Science Base Catalogue for more collections submitted by MGRRE.



MGRRE_PureOilScoutTickets_Irma_1_21017120450000

API 21017120450000

Permit Number 12045

Lease Name Irma

Well Number 1

County Bay

Township 14N

Range 06E

Section 17

2021 DEQ or Pure co_name Gulf Refining Company and EPD

Pure Number 247

Latitude 43.61873

Longitude -83.7959

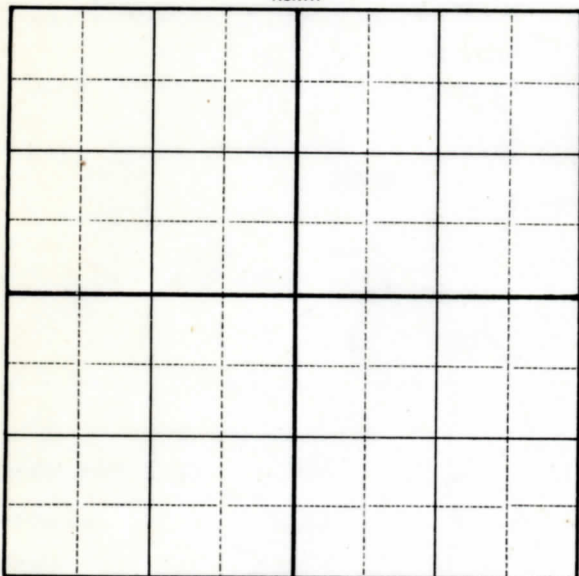
WELL REPORT - OUTSIDE OPERATIONS

SERIAL NO. 247STATE Michigan ~~XPSAX~~ CO. BayOPERATOR Gulf Refining Co.FARM Irma WELL NO. 1TWP. Hampton S. 17 T. 14N R. 6ELOC. NE SW NWWILDCAT ☐ FIELD ☐ FIELD NAME _____

MAP NO. _____ CO-ORD. _____ ELEV. _____

STATUS Plugged and Abandoned 10-7-52Total Depth 2894'

NORTH

DATE 11-25-52 SCOUT DRS

THE PURE OIL COMPANY

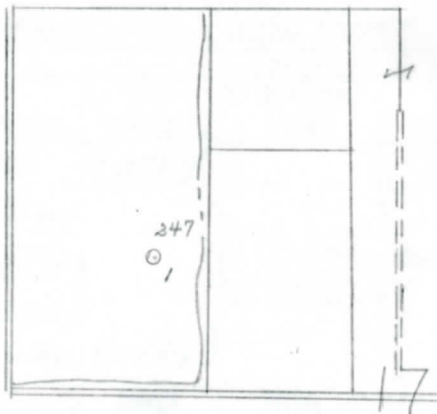
LOCATION REPORT

Date December 26, 1945 A.F.E. No. _____
 Division Mich. Producing District _____ Lease Irma
 Acres _____ Lease No. _____ Elevation _____ Well No. 1 (Serial No. 247)
 Quadrangle NE-SW-NW Sec. 17 Twp. 14 N Rge. 6 E Twp. Hampton
 Survey _____ County Bay State Michigan
 Operator Gulf Ref. Co. Map Hampton Township, Bay County

<u>330</u>	<u>330</u>	Feet from North Line of Lease
<u>330</u>	<u>330</u>	" " East " " "
		" " South " " "
		" " West " " "
		Feet from North Line of Section
<u>990</u>	<u>990</u>	" " East " " "
<u>990</u>	<u>990</u>	" " South " <u>2/4</u>
		" " West " " "

LEGEND

- | | |
|-------------------------|---------------------------|
| ☼ Gas Well | ☼ Dry Showing Gas |
| ● Oil Well | ⊗ Abandoned Location |
| ☼ Gas - Distillate Well | ☼ or ⊗ Abandoned Gas Well |
| ○ or ⊗ Dry Hole | ● or ⊗ Abandoned Oil Well |
| ● Dry Showing Oil | ● or ⊗ Input Well |



N



Remarks: _____ Scale _____

Submitted by CB Civil Engineer Approved by _____ Division Manager
 Approved by _____ Vice-President - General Manager

D. C. Shackelford