



Western Michigan University  
ScholarWorks at WMU

---

Legacy Scout Tickets from Pure Oil Company

---

8-20-2021

**MGRRE\_PureOilScoutTickets\_Baublitz &  
Stewart\_1\_21017122240000**

MGRRE

*Western Michigan University*

Follow this and additional works at: <https://scholarworks.wmich.edu/pure>



Part of the Geology Commons

---

#### **WMU ScholarWorks Citation**

MGRRE, "MGRRE\_PureOilScoutTickets\_Baublitz & Stewart\_1\_21017122240000" (2021). *Legacy Scout Tickets from Pure Oil Company*. 917.

<https://scholarworks.wmich.edu/pure/917>

This Document is brought to you for free and open access via ScholarWorks at WMU. It has been accepted for inclusion in Legacy Scout Tickets from Pure Oil Company by an authorized administrator of ScholarWorks at WMU. See the National Digital Catalogue - Science Base Catalogue for more collections submitted by MGRRE.



---

**MGRRE\_PureOilScoutTickets\_Baublitz & Stewart\_1\_21017122240000**

API 21017122240000

Permit Number 12224

Lease Name Baublitz & Stewart

Well Number 1

County Bay

Township 17N

Range 04E

Section 35

2021 DEQ or Pure co\_name Collin, C. W.

Pure Number 259

Latitude 43.82934

Longitude -83.96552

# THE PURE OIL COMPANY LOCATION REPORT

Date April 10, 1946

A.F.E. No. \_\_\_\_\_

Baublitz - Stewart

Division Mich. Producing

District \_\_\_\_\_

Lease \_\_\_\_\_

Baublitz - Stewart

Acres \_\_\_\_\_

Lease No. \_\_\_\_\_

Elevation \_\_\_\_\_

Well No. 1

(Serial No. 259)

Quadrangle SW-NW-SW  
SW NW SW

Sec. 35

Twp. 17 N

Rge. 4 E

Twp. Pinconning  
Pinconning

Survey \_\_\_\_\_

County Bay

State \_\_\_\_\_

Michigan

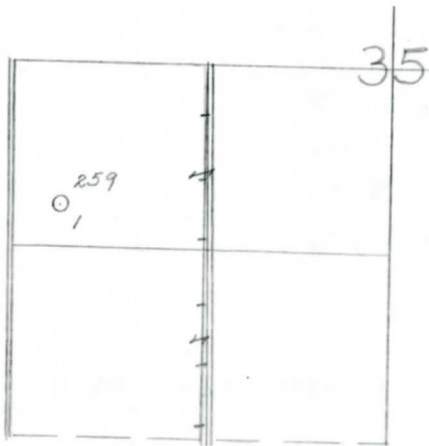
Operator C. W. Collin  
C. W. Collin

Map Pinconning Township, Bay County

_____	Feet from North Line of Lease	_____	_____	_____	_____
_____	" " East " " "	_____	_____	_____	_____
<u>330</u>	<u>330</u>	" " South " " "	_____	_____	_____
<u>330</u>	<u>330</u>	" " West " " "	_____	_____	_____
<u>990</u>	<u>990</u>	Feet from North Line of Section	<u>1/4</u>	_____	_____
_____	" " East " " "	_____	_____	_____	_____
_____	" " South " " "	_____	_____	_____	_____
<u>330</u>	<u>330</u>	" " West " " "	_____	_____	_____

### LEGEND

- Location
- ☀ Gas Well
- Oil Well
- ☀ Gas - Distillate Well
- ∅ or ○ Dry Hole
- Dry Showing Oil
- ☀ Dry Showing Gas
- ⊖ Abandoned Location
- ☀ or ⊖ Abandoned Gas Well
- or ● Abandoned Oil Well
- or ○ Input Well



Scale \_\_\_\_\_

Remarks: \_\_\_\_\_

Submitted by CB \_\_\_\_\_  
Civil Engineer

Approved by \_\_\_\_\_  
Division Manager

Approved by \_\_\_\_\_  
Vice-President - General Manager

Division Michigan Producing  
 Date June 5, 1946

LOCATION BELOW  
 THE PURE OIL COMPANY

COMPLETION RECORD OF WELLS DRILLED BY OTHER OPERATORS

Michigan Producing Division

Date June 5, 1946 No. 259  
 State Mich. Co. Bay ~~DESEL~~ Twp. Pinconning Sec. 35 Twp. 17 N Rge. 4 E  
 Well No. 1 Serial No. 259 Farm Baublitz-Stewart Acres \_\_\_\_\_  
 Operator G. W. Collin  
 Date started 4-9-46 Date completed 5-8-46 Elevation 600.0

PRODUCTION RECORD

1st 24 hours natural 1/2 Bailer Oil.  
 Date of shot \_\_\_\_\_ No. of quarts \_\_\_\_\_ From \_\_\_\_\_ To \_\_\_\_\_ From \_\_\_\_\_ To \_\_\_\_\_  
 Date of acid 5-18-46 No. of gallons 150  
 1st 24 hours after acid No results.  
 Completed as: Oil Well \_\_\_\_\_ Gas Well \_\_\_\_\_ Dry Hole X

FORMATION AND CASING RECORD

Formation	Top	Bottom	Top Pay	Bottom Pay	Remarks	Casing			
						Size	Set at		
Sunbury	1516	SLM.	(-916)			10"	91		
Berea	1545	(-945)				5-3/16"	2830		
Antrim	1728	(-1128)							
Traverse Lime	2063	SLM.	(-1463)		Show oil & S.W. at 2100. (-1500)				
Dundee	2827	"	(-2227)		Small show oil 2934. (-2334) 700 ft. Salt water 2970-2980. (-2370)				
Total Depth		2980	(-2380)						
Plugged back:		2957	(-2357)						
Perf.	2064	2069	with 5 shots - recovered hole full salt water.						

Remarks \_\_\_\_\_  
 \_\_\_\_\_  
 \_\_\_\_\_

Signed D. C. Shackelford