



Western Michigan University  
ScholarWorks at WMU

---

Legacy Scout Tickets from Pure Oil Company

---

8-20-2021

**MGRRE\_PureOilScoutTickets\_Erno, Arthur\_1\_21017122610000**

MGRRE

*Western Michigan University*

Follow this and additional works at: <https://scholarworks.wmich.edu/pure>



Part of the Geology Commons

---

#### WMU ScholarWorks Citation

MGRRE, "MGRRE\_PureOilScoutTickets\_Erno, Arthur\_1\_21017122610000" (2021). *Legacy Scout Tickets from Pure Oil Company*. 918.

<https://scholarworks.wmich.edu/pure/918>

This Document is brought to you for free and open access via ScholarWorks at WMU. It has been accepted for inclusion in Legacy Scout Tickets from Pure Oil Company by an authorized administrator of ScholarWorks at WMU. See the National Digital Catalogue - Science Base Catalogue for more collections submitted by MGRRE.



---

## MGRRE\_PureOilScoutTickets\_Erno, Arthur\_1\_21017122610000

API 21017122610000

Permit Number 12261

Lease Name Erno, Arthur

Well Number 1

County Bay

Township 14N

Range 06E

Section 15

2021 DEQ or Pure co\_name Gulf Refining Company

Pure Number 260

Latitude 43.60983

Longitude -83.75852

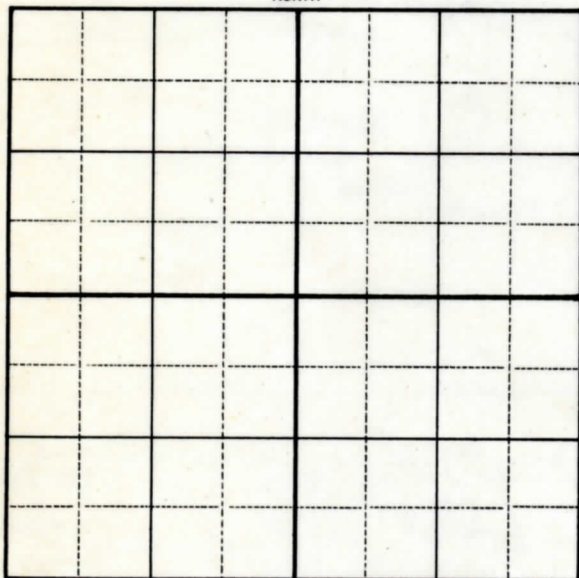
## WELL REPORT - OUTSIDE OPERATIONS

SERIAL NO. 260STATE Michigan ~~PSH~~ Bay  
CO.OPERATOR Gulf Refining CompanyFARM Arthur Erno WELL NO. 1TWP. Hampton S. 15 T. 14N R. 6E  
SURVEYLOC. SW SW SWWILDCAT ☐ FIELD ☐ FIELD NAME \_\_\_\_\_

MAP NO. \_\_\_\_\_ CO-ORD. \_\_\_\_\_ ELEV. \_\_\_\_\_

STATUS Abandoned 10-25-48. To be used as a  
brine disposal well. Total Depth 2895'.

NORTH

DATE 11-17-48 SCOUT H. J. G.

# THE PURE OIL COMPANY

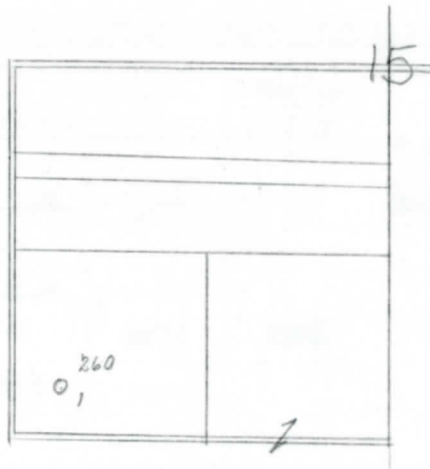
Date April 24, 1946 LOCATION REPORT A.F.E. No. Arthur Erno  
 Division Mich. Producing District \_\_\_\_\_ Lease Arthur Erno  
 Acres \_\_\_\_\_ Lease No. \_\_\_\_\_ Elevation \_\_\_\_\_ Well No. 1 (Serial No. 260)  
 Quadrangle SW-SW-SW Sec. 15 Twp. 14 N Rge. 6 E Twp. Hampton  
 Survey \_\_\_\_\_ County Bay State Michigan  
 Operator Gulf Ref. Co. Map Hampton Township, Bay County  
Gulf Refining Company

|                                 |                          |
|---------------------------------|--------------------------|
| Feet from North Line of Lease   |                          |
| " " East " " "                  |                          |
| <u>330</u> <u>330</u>           | " " South " " "          |
| <u>330</u> <u>330</u>           | " " West " " "           |
| Feet from North Line of Section |                          |
| " " East " " "                  |                          |
| <u>330</u> <u>330</u>           | " " South " <u>1/4</u> " |
| <u>330</u> <u>330</u>           | " " West " " "           |

## LEGEND

○ Location

- |                         |                           |
|-------------------------|---------------------------|
| ☀ Gas Well              | ☀ Dry Showing Gas         |
| ● Oil Well              | ⊗ Abandoned Location      |
| ☀ Gas - Distillate Well | ☀ or ☀ Abandoned Gas Well |
| ⊗ or ⊗ Dry Hole         | ● or ● Abandoned Oil Well |
| ● Dry Showing Oil       | ● or ○ Input Well         |



Scale \_\_\_\_\_

Remarks: \_\_\_\_\_  
 \_\_\_\_\_  
 \_\_\_\_\_

Submitted by CB Civil Engineer Approved by \_\_\_\_\_ Division Manager  
 Approved by \_\_\_\_\_ Vice-President - General Manager



Division

Signed **D. C. Shackelford**