



Western Michigan University
ScholarWorks at WMU

Legacy Color Lithology Strip Logs

5-16-2022

MGRRE_LithStripLog_BRAZEE, CLARA 1_21127155850000

MGRRE Western Michigan University

Follow this and additional works at: <https://scholarworks.wmich.edu/lith>



Part of the Geology Commons

WMU ScholarWorks Citation

Western Michigan University, MGRRE, "MGRRE_LithStripLog_BRAZEE, CLARA 1_21127155850000" (2022). *Legacy Color Lithology Strip Logs*. 921.
<https://scholarworks.wmich.edu/lith/921>

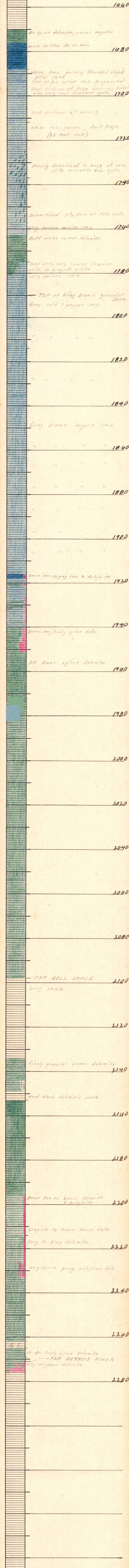
This Document is brought to you for free and open access by ScholarWorks at WMU. It has been accepted for inclusion in Legacy Color Lithology Strip Logs by an authorized administrator of ScholarWorks at WMU. For more information, please contact wmu-scholarworks@wmich.edu.



STATE Michigan		COMPANY Mercer Oil Co.	
COUNTY Oceana		FARM C. BRAZEE	WELL NO. 1.
BLOCK Benona		SURVEY NW SW NW 13,	
SEC. 13		2276	
T. 14N	R. 18W	TOTAL DEPTH	
CONTRACTOR McClure Dty.			
COMMENCED 11-13-49			
COMPLETED 12-17-49			
REMARKS Samples by Jack Mortensen			
ALTITUDE 660			
PRODUCTION Tr. 15			
A.I.P. 92 bbls.			

CASING RECORD	
	10"
	8 1/4"
20"	6 5/8" 665
15 1/2"	5 1/8" 1466 (perm. rt.)
12 1/2"	1473 pulled
	2157 "
SHOT	QUARTS BETWEEN

FORM 394 - In stock and for sale by Mid-West Prtg. Co., Tulsa



U.S. 11. Br. finely xylene dolomite
---TOP DETROIT RIVER
Gray anhydrous dolomite