



Western Michigan University
ScholarWorks at WMU

Legacy Scout Tickets from Pure Oil Company

8-20-2021

MGRRE_PureOilScoutTickets_Unitized Tract New York Central Railroad_2_21017123670000

MGRRE

Western Michigan University

Follow this and additional works at: <https://scholarworks.wmich.edu/pure>



Part of the Geology Commons

WMU ScholarWorks Citation

MGRRE, "MGRRE_PureOilScoutTickets_Unitized Tract New York Central Railroad_2_21017123670000" (2021). *Legacy Scout Tickets from Pure Oil Company*. 922.

<https://scholarworks.wmich.edu/pure/922>

This Document is brought to you for free and open access via ScholarWorks at WMU. It has been accepted for inclusion in Legacy Scout Tickets from Pure Oil Company by an authorized administrator of ScholarWorks at WMU. See the National Digital Catalogue - Science Base Catalogue for more collections submitted by MGRRE.



**MGRRE_PureOilScoutTickets_Unitized Tract New York Central
Railroad_2_21017123670000**

API 21017123670000

Permit Number 12367

Lease Name Unitized Tract New York Central Railroad

Well Number 2

County Bay

Township 15N

Range 04E

Section 36

2021 DEQ or Pure co_name Muskegon Development Company

Pure Number 264

Latitude 43.6630046

Longitude -83.9480748

THE PURE OIL COMPANY

LOCATION REPORT

Date June 13, 1946 A.F.E. No. Unitized tract N.Y.C.R.R., Unitized tract N.Y.C.R.R.

Division Michigan Producing District _____ Lease _____

Acres _____ Lease No. 36 Elevation 4E Well No. 2 (Serial No. 264)

Quadrangle C N $\frac{1}{2}$ SW NW Sec. 36 Twp. 15-N Rge. 4-E Dist. Kawkawlin Twp. Kawkawlin

Survey _____ County Bay State Michigan

Operator L. C. MacGregor Map Kawkawlin Township, Bay County

330 330 Feet from North Line of Lease

“ “ East “ “ “

“ “ South “ “ “

660 660 “ “ West “ “ “

Feet from North Line of Section 1/4

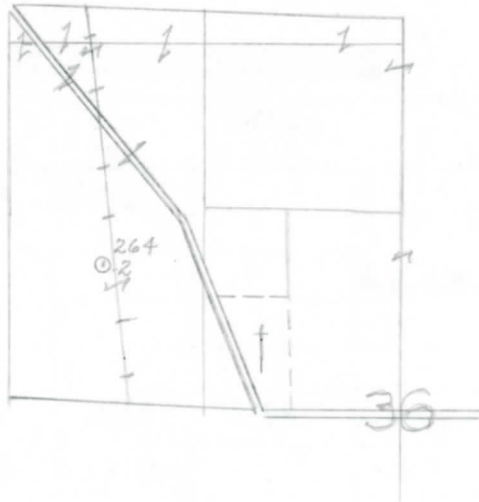
“ “ East “ “ “

990 990 “ “ South “ “ “

660 660 “ “ West “ “ “

LEGEND

- Location
- ☀ Gas Well
- Oil Well
- ☀ Gas - Distillate Well
- ∅ or ○ Dry Hole
- Dry Showing Oil
- ☀ Dry Showing Gas
- ⊗ Abandoned Location
- ☀ or ☀ Abandoned Gas Well
- or ● Abandoned Oil Well
- or ○ Input Well



Scale _____

Remarks: _____

Submitted by CB Civil Engineer Approved by _____ Division Manager

Approved by _____ Vice-President - General Manager

Date *August 23, 1946*

LOCATION BELOW

THE PURE OIL COMPANY

W.E.E. NO.

COMPLETION RECORD OF WELLS DRILLED BY OTHER OPERATORS

Michigan Producing Division

Date August 28, 1946 No. 264
 State Michigan Co. Bay Twp. Kawcawlin Sec. 36 Twp. 15 N Rge. 4 E
 Well No. 2 Serial No. 264 Farm Unitized Tract-NYORR Acres _____
 Operator L. C. MacGregor
 Date started 6-27-46 Date completed 8-13-46 Elevation 602.6

PRODUCTION RECORD

1st 24 hours natural Filled up 3000 ft.
 Date of shot _____ No. of quarts _____ From _____ To _____ From _____ To _____
 Date of acid 8-5-46 No. of gallons 3000
 1st 24 hours after acid Pumped 12 Bbls.
 Completed as: Oil Well Gas Well _____ Dry Hole _____

FORMATION AND CASING RECORD

Formation	Top	Bottom	Top Pay	Bottom Pay	Remarks	Casing	
						Size	Set at
Coldw. Red Rock	1405	1408	(-802)			10"	104
Sunbury	1537	(-934)				8-1/4"	772
Berea	1560	(-957)			H.F.S.W. 1615-1627.	6-5/8"	2822
Antrim	1752	(-1149)			(-1012)		
Traverse Lime	2087	(-1484)					
Dundee	2797	SLM.	2927	2935	(-2324)		
Total Depth	(-2194)	2935	(-2332)				
Plugged back:		2931	(-2328)				

Remarks First plugged back to 2932' - treated with acid - pumped 250 bbls. oil in one day after acid - went entirely to water - plugged back one foot to 2931'.

Signed D. C. Shackelford