



Western Michigan University
ScholarWorks at WMU

Legacy Scout Tickets from Pure Oil Company

8-20-2021

**MGRRE_PureOilScoutTickets_Maxson, Bessie
Tr._1_21017124070000**

MGRRE
Western Michigan University

Follow this and additional works at: <https://scholarworks.wmich.edu/pure>



Part of the Geology Commons

WMU ScholarWorks Citation

MGRRE, "MGRRE_PureOilScoutTickets_Maxson, Bessie Tr._1_21017124070000" (2021). *Legacy Scout Tickets from Pure Oil Company*. 926.
<https://scholarworks.wmich.edu/pure/926>

This Document is brought to you for free and open access via ScholarWorks at WMU. It has been accepted for inclusion in Legacy Scout Tickets from Pure Oil Company by an authorized administrator of ScholarWorks at WMU. See the National Digital Catalogue - Science Base Catalogue for more collections submitted by MGRRE.



MGRRE_PureOilScoutTickets_Maxson, Bessie Tr._1_21017124070000

API 21017124070000

Permit Number 12407

Lease Name Maxson, Bessie Tr.

Well Number 1

County Bay

Township 16N

Range 03E

Section 12

2021 DEQ or Pure co_name Fletcher and Leman

Pure Number 268

Latitude 43.80986

Longitude -84.04972

THE PURE OIL COMPANY

LOCATION REPORT

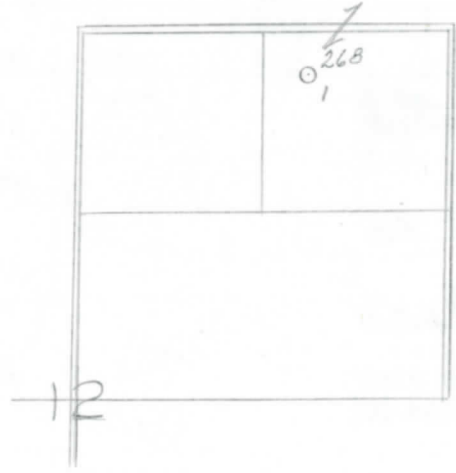
Date June 26, 1946 A.F.E. No. _____
 Division Mich. Producing District _____ Lease Bessie Marson Tr.
Bessie Maxson, Tr.
 Acres _____ Lease No. _____ Elevation _____ Well No. 1 (Serial No. 268)
 Quadrangle NW-NE-NE Sec. 12 Twp. 16 N Rge. 3 E Twp. Garfield
 Survey Fletcher & Leman County Bay State Michigan
 Operator Fletcher & Leman Map Garfield Township, Bay County

330 330 Feet from North Line of Lease
 " " East " " "
 " " South " " "
330 330 Feet from North Line of Section
330 330 " " West " " "
 " " East " " "
 " " South " " "
 " " West " " "

LEGEND

- Location
- ☀ Gas Well
- Oil Well
- ☀ Gas - Distillate Well
- ⊘ or ○ Dry Hole
- Dry Showing Oil
- ☀ Dry Showing Gas
- ⊘ Abandoned Location
- ☀ or ☀ Abandoned Gas Well
- or ● Abandoned Oil Well
- or ○ Input Well

Rum



Remarks: _____ Scale _____

Submitted by CB Civil Engineer Approved by _____ Division Manager
 Approved by _____ Vice-President - General Manager

THE ROCK OIL COMPANY
COMPLETION RECORD OF WELLS DRILLED BY OTHER OPERATORS

Michigan Producing Division

Date August 21, 1946 No. 268
 State Michigan Co. Bay ~~INDEX~~ Twp. Garfield Sec. 12 Twp. 16 N Rge. 3 E
 Well No. 1 Serial No. 268 Farm Bessie Maxson, Tr. Acres _____
 Operator Fletcher & Leman
 Date started 6-25-46 Date completed 8-15-46 Elevation 625.5

PRODUCTION RECORD

1st 24 hours natural _____
 Date of shot _____ No. of quarts _____ From _____ To _____ From _____ To _____
 Date of acid _____ No. of gallons _____ shot _____
 1st 24 hours after acid _____
 Completed as: Oil Well _____ Gas Well _____ Dry Hole X

FORMATION AND CASING RECORD

Formation	Top	Bottom	Top Pay	Bottom Pay	Remarks	Casing	
						Size	Set at
Marshall	512	608	(+114)		4 ba. wtr./hr. from 925'-935'. (-299)	10"	119
Coldw. Red Rock	1600	1605	(-974)			8-1/4"	762
Sunbury	1715	C.T.M.	(-1089)			5-3/16"	3023
Berea	1747	"	(-1121)		S.W. in Berea.		
Antrim	1919	(-1293)					
Traverse Lime	2280	(-1654)			H.F.S.W. 2550-2555.	(-1924)	
Dundee	3020	S.L.M.	(-2394)		Salt water 3180-84.	(-2554)	
Total Depth		3184	(-2558)		10 bbls. per hour.		

Remarks 1755' equals 1760' SLM; 3023' equals 3023' SLM.

Signed D. C. Shackelford