



Western Michigan University  
ScholarWorks at WMU

---

Legacy Scout Tickets from Pure Oil Company

---

8-20-2021

**MGRRE\_PureOilScoutTickets\_Flies, William\_1\_21017124550000**

MGRRE

*Western Michigan University*

Follow this and additional works at: <https://scholarworks.wmich.edu/pure>



Part of the Geology Commons

---

#### **WMU ScholarWorks Citation**

MGRRE, "MGRRE\_PureOilScoutTickets\_Flies, William\_1\_21017124550000" (2021). *Legacy Scout Tickets from Pure Oil Company*. 930.

<https://scholarworks.wmich.edu/pure/930>

This Document is brought to you for free and open access via ScholarWorks at WMU. It has been accepted for inclusion in Legacy Scout Tickets from Pure Oil Company by an authorized administrator of ScholarWorks at WMU. See the National Digital Catalogue - Science Base Catalogue for more collections submitted by MGRRE.



---

**MGRRE\_PureOilScoutTickets\_Flies, William\_1\_21017124550000**

API 21017124550000

Permit Number 12455

Lease Name Flies, William

Well Number 1

County Bay

Township 17N

Range 04E

Section 16

2021 DEQ or Pure co\_name Major, Ervin and Mutch, J.O.

Pure Number 272

Latitude 43.87603

Longitude -83.98728

# THE PURE OIL COMPANY

## LOCATION REPORT

Date July 17, 1946 A.F.E. No. \_\_\_\_\_

Division Mich. Producing District \_\_\_\_\_ Lease Wm. Flies

Acres \_\_\_\_\_ Lease No. \_\_\_\_\_ Elevation \_\_\_\_\_ Well No. 1 (Serial No. 272)

Quadrangle SE-SE-NE Sec. 16 Twp. 17 N Rge. 4 E Twp. Pinconning

Survey \_\_\_\_\_ County Bay State Michigan

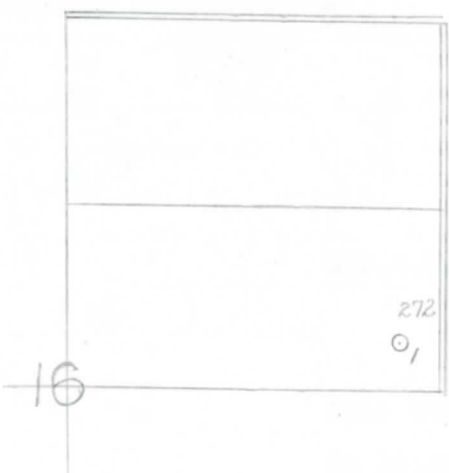
Operator Ervin Major & J. O. Mutch Map Pinconning Township, Bay County

Feet from North Line of Lease	
<u>330</u>	<u>330</u>
" "	East " " "
<u>330</u>	<u>330</u>
" "	South " " "
" "	West " " "

Feet from North Line of Section	
<u>330</u>	<u>330</u>
" "	East " " <u>1/4</u>
<u>330</u>	<u>330</u>
" "	South " " "
" "	West " " "

- LEGEND**
- Location
  - ☀ Gas Well
  - Oil Well
  - ☀ Gas - Distillate Well
  - ∅ or ○ Dry Hole
  - Dry Showing Oil
  - ☀ Dry Showing Gas
  - ⊙ Abandoned Location
  - ☀ or ☀ Abandoned Gas Well
  - or ● Abandoned Oil Well
  - or ○ Input Well

*Ru*



Scale \_\_\_\_\_

Remarks: \_\_\_\_\_

Submitted by UB Civil Engineer Approved by \_\_\_\_\_ Division Manager

Approved by \_\_\_\_\_ Vice-President - General Manager

COMPLETION RECORD OF WELLS DRILLED BY OTHER OPERATORS

Michigan Producing Division

Date September 4, 1946 No. 272  
 State Michigan Co. Bay Twp. Pinconning Sec. 16 Twp. 17 N Rge. 4 E  
 Well No. 1 Serial No. 272 Farm Wm. Flies Acres \_\_\_\_\_  
 Operator Ervin Major and J. O. Mutch  
 Date started 7-18-46 Date completed 9-1-46 Elevation 610.6

PRODUCTION RECORD

1st 24 hours natural \_\_\_\_\_  
 Date of shot \_\_\_\_\_ No. of quarts \_\_\_\_\_ From \_\_\_\_\_ To \_\_\_\_\_ From \_\_\_\_\_ To \_\_\_\_\_  
 Date of acid \_\_\_\_\_ No. of gallons \_\_\_\_\_ shot \_\_\_\_\_  
 1st 24 hours after acid \_\_\_\_\_  
 Completed as: Oil Well \_\_\_\_\_ Gas Well \_\_\_\_\_ Dry Hole X

FORMATION AND CASING RECORD

Formation	Top	Bottom	Top Pay	Bottom Pay	Remarks	Casing	
						Size	Set at
Marshall	365	(+246)				10"	76
Coldw. Red Rock	1375	1380	(-764)			8-1/4"	557
Sunbury	1530	(-912)				7"	2493
Berea	1551	(-940)			H.F.S.W. 1572-1615.	(-961)	
Antrim	1720	2035	(-1109)				
Traverse Lime	2071	(-1460)					
Dundee	2850	(-2239)			Salt water (500 ft. in 1 1/2 hrs.)		
<u>T pm</u>	2035	(-1424)			3230-3236.		
Total Depth		3236	(-2625)		(-2619)		

Remarks \_\_\_\_\_  
 \_\_\_\_\_  
 \_\_\_\_\_

Signed D. C. Shackelford