



Western Michigan University  
ScholarWorks at WMU

---

Legacy Scout Tickets from Pure Oil Company

---

8-20-2021

**MGRRE\_PureOilScoutTickets\_Schaefer,  
Joseph\_1\_21017124630000**

MGRRE  
*Western Michigan University*

Follow this and additional works at: <https://scholarworks.wmich.edu/pure>



Part of the Geology Commons

---

#### **WMU ScholarWorks Citation**

MGRRE, "MGRRE\_PureOilScoutTickets\_Schaefer, Joseph\_1\_21017124630000" (2021). *Legacy Scout Tickets from Pure Oil Company*. 931.  
<https://scholarworks.wmich.edu/pure/931>

This Document is brought to you for free and open access via ScholarWorks at WMU. It has been accepted for inclusion in Legacy Scout Tickets from Pure Oil Company by an authorized administrator of ScholarWorks at WMU. See the National Digital Catalogue - Science Base Catalogue for more collections submitted by MGRRE.



---

**MGRRE\_PureOilScoutTickets\_Schaefer, Joseph\_1\_21017124630000**

API 21017124630000

Permit Number 12463

Lease Name Schaefer, Joseph

Well Number 1

County Bay

Township 14N

Range 06E

Section 16

2021 DEQ or Pure co\_name Summit Essexville, Incorporated

Pure Number 273

Latitude 43.6150407

Longitude -83.7760057

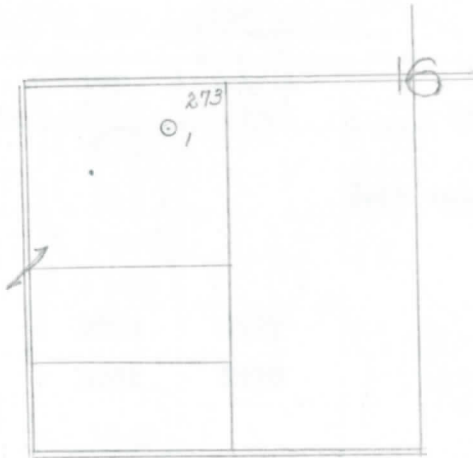
**THE PURE OIL COMPANY**  
**LOCATION REPORT**

Date July 17, 1946 A.F.E. No. Joseph Schaefer  
 Division Mich. Producing District \_\_\_\_\_ Lease Joseph Schaefer  
 Acres \_\_\_\_\_ Lease No. \_\_\_\_\_ Elevation \_\_\_\_\_ Well No. 1 (Serial No. 273)  
 Quadrangle NE-NW-SW Sec. 16 Twp. 14 N Rge. 6 E Twp. Hampton  
 Survey \_\_\_\_\_ County Bay State Michigan  
 Operator Gulf Ref. Co. Map Hampton Township, Bay County

<u>330</u>	<u>330</u>	Feet from North Line of Lease
<u>330</u>	<u>330</u>	" " East " " "
		" " South " " "
		" " West " " "
<u>330</u>	<u>330</u>	Feet from North Line of Section
		" " East " " "
		" " South " " "
<u>990</u>	<u>990</u>	" " West " " "

- LEGEND**
- Location
  - ☀ Gas Well
  - Oil Well
  - ☀ Gas - Distillate Well
  - ∅ or ○ Dry Hole
  - or ○ Dry Showing Oil
  - ☀ Dry Showing Gas
  - ⊗ Abandoned Location
  - ☀ or ☀ Abandoned Gas Well
  - or ● Abandoned Oil Well
  - or ○ Input Well

*Handwritten notes:*  
 986  
 7-5-46  
 95  
 10-20-46  
 8-14-46  
 673



Remarks: \_\_\_\_\_  
 \_\_\_\_\_  
 \_\_\_\_\_

Submitted by CB Civil Engineer Approved by \_\_\_\_\_ Division Manager  
 Approved by \_\_\_\_\_ Vice-President - General Manager

## THE PURE OIL COMPANY

THE PURE OIL COMPANY

COMPLETION RECORD OF WELLS DRILLED BY OTHER OPERATORS

Michigan Producing Division

Date August 28, 1946 No. 273  
 State Michigan Co. Bay ~~INDEX~~ NE-NW-5W  
 Twp. Hampton Sec. 16 Twp. 14 N Rge. 6 E  
 Well No. 1 Serial No. 273 Farm Joseph Schaefer Acres \_\_\_\_\_  
 Operator Gulf Refining Company  
 Date started 7-5-46 Date completed 8-13-46 Elevation 588.4

PRODUCTION RECORD

1st 24 hours natural Swabbed 57 Bbls.  
 Date of shot \_\_\_\_\_ No. of quarts \_\_\_\_\_ From \_\_\_\_\_ To \_\_\_\_\_ From \_\_\_\_\_ To \_\_\_\_\_  
 Date of acid 8-23-46 No. of gallons 1000  
 1st 24 hours after acid Pumped 136 Bbls.  
 Completed as: Oil Well  Gas Well \_\_\_\_\_ Dry Hole \_\_\_\_\_

FORMATION AND CASING RECORD

Formation	Top	Bottom	Top Pay	Bottom Pay	Remarks	Casing	
						Size	Set at
Sunbury	1454	SLM.	(-866)			10"	95
Berea	1476	"	(-888)		Salt water 1519 SLM.	8-1/4"	673
Antrim	1652	"	(-1064)		(-931)	6-5/8"	1660
Traverse Lime	1984	"	(-1396)			5-3/16"	2674
Dundee	2666	"	2870	2877	(-2282)		
	(-2078)		2887	2890	(-2299)		
Total Depth		2890	(-2307)				
Remarks	1656' eq. 1655' SLM; 1526' eq. 1540' SLM; 1985' eq. 1997' SLM; 2653' eq. 2662' SLM.						

Signed D. C. Shackelford