



Western Michigan University
ScholarWorks at WMU

Legacy Scout Tickets from Pure Oil Company

8-20-2021

**MGRRE_PureOilScoutTickets_Ammann,
Adele_3_21017125990000**

MGRRE
Western Michigan University

Follow this and additional works at: <https://scholarworks.wmich.edu/pure>



Part of the Geology Commons

WMU ScholarWorks Citation

MGRRE, "MGRRE_PureOilScoutTickets_Ammann, Adele_3_21017125990000" (2021). *Legacy Scout Tickets from Pure Oil Company*. 932.
<https://scholarworks.wmich.edu/pure/932>

This Document is brought to you for free and open access via ScholarWorks at WMU. It has been accepted for inclusion in Legacy Scout Tickets from Pure Oil Company by an authorized administrator of ScholarWorks at WMU. See the National Digital Catalogue - Science Base Catalogue for more collections submitted by MGRRE.



MGRRE_PureOilScoutTickets_Ammann, Adele_3_21017125990000

API 21017125990000

Permit Number 12599

Lease Name Ammann, Adele

Well Number 3

County Bay

Township 15N

Range 04E

Section 26

2021 DEQ or Pure co_name Muskegon Development Company

Pure Number 274

Latitude 43.66938

Longitude -83.96456

THE PURE OIL COMPANY LOCATION REPORT

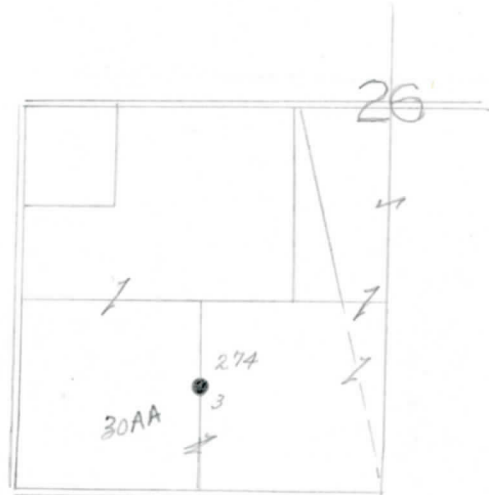
Date September 18, 1946 A.F.E. No. _____
 Division Mich. Producing District _____ Lease Adele Ammann
 Adele Ammann
 Adele Ammann
 Acres _____ Lease No. _____ Elevation _____ Well No. 3 (Serial No. 274)
 Quadrangle N1/2 - S1/2 - SW Sec. 26 Twp. 15 N Rge. 4 E Twp. Kawkawlin
 Survey _____ County Bay State Michigan
 Operator C.W. Jones & E.G. Steuernal, Agents Map Kawkawlin Township, Bay County

| | | |
|-------------|-------------|---------------------------------|
| <u>600</u> | <u>600</u> | Feet from North Line of Lease |
| <u>1320</u> | <u>1320</u> | " " East " " " |
| | | " " South " " " |
| <u>1320</u> | <u>1320</u> | " " West " " " |
| | | Feet from North Line of Section |
| <u>1320</u> | <u>1320</u> | " " East " <u>1/4</u> " |
| <u>720</u> | <u>720</u> | " " South " " " |
| <u>1320</u> | <u>1320</u> | " " West " " " |

LEGEND

- Location
- ☉ Gas Well
- Oil Well
- ☼ Gas - Distillate Well
- ∅ or ○ Dry Hole
- Dry Showing Oil
- ☉ Dry Showing Gas
- ⊗ Abandoned Location
- ☼ or ☼ Abandoned Gas Well
- or ● Abandoned Oil Well
- or ○ Input Well

low



Remarks: _____

Scale _____

Submitted by CB Civil Engineer Approved by _____ Division Manager
 Approved by _____ Vice-President - General Manager