



Western Michigan University
ScholarWorks at WMU

Legacy Scout Tickets from Pure Oil Company

8-20-2021

MGRRE_PureOilScoutTickets_Houser Joan_1_21017126180000

MGRRE

Western Michigan University

Follow this and additional works at: <https://scholarworks.wmich.edu/pure>



Part of the Geology Commons

WMU ScholarWorks Citation

MGRRE, "MGRRE_PureOilScoutTickets_Houser Joan_1_21017126180000" (2021). *Legacy Scout Tickets from Pure Oil Company*. 935.

<https://scholarworks.wmich.edu/pure/935>

This Document is brought to you for free and open access via ScholarWorks at WMU. It has been accepted for inclusion in Legacy Scout Tickets from Pure Oil Company by an authorized administrator of ScholarWorks at WMU. See the National Digital Catalogue - Science Base Catalogue for more collections submitted by MGRRE.



MGRRE_PureOilScoutTickets_Houser Joan_1_21017126180000

API 21017126180000

Permit Number 12618

Lease Name Houser Joan

Well Number 1

County Bay

Township 14N

Range 06E

Section 17

2021 DEQ or Pure co_name Summit Essexville, Incorporated

Pure Number 277

Latitude 43.614628

Longitude -83.7815088

THE PURE OIL COMPANY

THE PURE O

WELL REPORT—OUTSIDE OPERATIONS

LOCATION

Date

Essexville Field

SERIAL NO. 277

STATE Michigan

TOWNSHIP

Bay

OPERATOR Gulf Refining Company

FARM Joan Houser

WELL NO. 1

TWP. Hampton

S. 17 T. 14 N R. 6 E

LOC. NE NE SE

MAP NO. CO-ORD. ELEV. 588.7

STATUS Plugged and abandoned 2-12-47

Total Depth 2895' - now used as brine
input.

NORTH

DATE 3-12-47 SCOUT H. J. G.

OIL COMPANY
 ON REPORT
 A.F.E. No. Joan Houser
 Division Mich. Producing District _____ Lease Joan Houser
 Acres _____ Lease No. _____ Elevation _____ Well No. 1 (Serial No. 277)
 Quadrangle NE-NE-SE Sec. 17 Twp. 14 N Rge. 6 E Twp. Hampton
 Survey _____ County Bay State Michigan
 Operator Gulf Ref. Co. Map Hampton Township, Bay County

450	450	Feet from North Line of Lease
450	450	" " East " " "
		" " South " " "
		" " West " " "
450	450	Feet from North Line of Section
450	450	" " East " " "
		" " South " " "
		" " West " " "

LEGEND

○ Location

☼ Gas Well

● Oil Well

☼ Gas - Distillate Well

○ or ○ Dry Hole

● Dry Showing Oil

☼ Dry Showing Gas

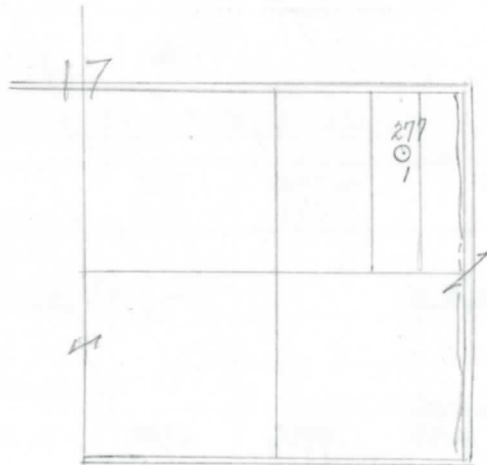
⊗ Abandoned Location

☼ or ☼ Abandoned Gas Well

● or ● Abandoned Oil Well

⊗ or ⊗ Input Well

612
 9-17-46
 10" DP 9-17
 bume
 2-12-47



Remarks: _____ Scale _____
 Submitted by CB Civil Engineer Approved by _____ Division Manager
 Approved by _____ Vice-President - General Manager

