



Western Michigan University
ScholarWorks at WMU

Legacy Scout Tickets from Pure Oil Company

8-20-2021

**MGRRE_PureOilScoutTickets_Egan,
Catherine_1_21017126660000**

MGRRE
Western Michigan University

Follow this and additional works at: <https://scholarworks.wmich.edu/pure>



Part of the Geology Commons

WMU ScholarWorks Citation

MGRRE, "MGRRE_PureOilScoutTickets_Egan, Catherine_1_21017126660000" (2021). *Legacy Scout Tickets from Pure Oil Company*. 940.
<https://scholarworks.wmich.edu/pure/940>

This Document is brought to you for free and open access via ScholarWorks at WMU. It has been accepted for inclusion in Legacy Scout Tickets from Pure Oil Company by an authorized administrator of ScholarWorks at WMU. See the National Digital Catalogue - Science Base Catalogue for more collections submitted by MGRRE.



MGRRE_PureOilScoutTickets_Egan, Catherine_1_21017126660000

API 21017126660000

Permit Number 12666

Lease Name Egan, Catherine

Well Number 1

County Bay

Township 14N

Range 06E

Section 16

2021 DEQ or Pure co_name Gulf Refining Company and EPD

Pure Number 282

Latitude 43.61135

Longitude -83.77607

THE PURE OIL COMPANY

LOCATION REPORT

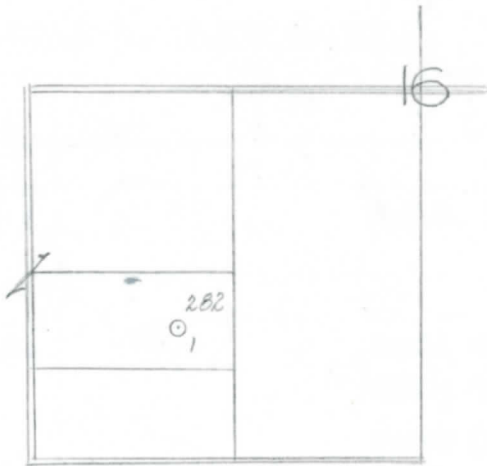
Date October 9, 1946 A.F.E. No. _____
 Division Mich. Producing District _____ Lease Catherine Egan
 Acres _____ Lease No. _____ Elevation _____ Well No. 1 (Serial No. 282)
 Quadrangle NE-SW-SW Sec. 16 Twp. 14 N Rge. 6 E ~~XXX~~ ~~XXX~~ Hampton
 Survey _____ County Bay State Michigan
 Operator Gulf Refining Co. Map Hampton Township, Bay County

390 390 Feet from North Line of Lease
330 330 " " East " " "
 " " South " " "
 " " West " " "
 _____ Feet from North Line of Section
930 930 " " East " " "
990 990 " " South 1/4 "
 " " West " " "

LEGEND

- Location
- ☀ Gas Well
- Oil Well
- ☀ Gas - Distillate Well
- ∅ or ○ Dry Hole
- Dry Showing Oil
- ☀ Dry Showing Gas
- ⊗ Abandoned Location
- ☀ or ⊗ Abandoned Gas Well
- or ● Abandoned Oil Well
- or ○ Input Well

Handwritten notes:
 NE 230
 10-5-46
 10" D P 108



Remarks: _____

Submitted by CB Civil Engineer Approved by _____ Division Manager
 Approved by _____ Vice-President - General Manager

LOCATION BELOW
 THE PURE OIL COMPANY
 COMPLETION RECORD OF WELLS DRILLED BY OTHER OPERATORS

Michigan Producing DIVISION

Date December 4, 1946 No. 282
 State Mich. Co. Bay ~~Deer~~ Twp. Hampton Sec. 16 Twp. 14 N Rge. 6 E
 Well No. 1 Serial No. 282 Farm Catherine Egan Acres _____
 Operator Gulf Refining Company
 Date started 10-5-46 Date completed 11-25-46 Elevation 588.1

PRODUCTION RECORD

1st 24 hours natural _____
 Date of shot _____ No. of quarts _____ From _____ To _____ From _____ To _____
 Date of acid _____ No. of gallons shot _____
 1st 24 hours after acid _____
 Completed as: Oil Well _____ Gas Well _____ Dry Hole

FORMATION AND CASING RECORD

| Formation | Top | Bottom | Top Pay | Bottom Pay | Remarks | Casing | |
|---------------|------|---------|---------|------------|--|---------|--------|
| | | | | | | Size | Set at |
| Sunbury | 1495 | (-907) | | | | 10" | 108 |
| Berea | 1517 | (-929) | | | H.F.W. 1565. (-977) | 8-1/4" | 690 |
| Antrim | 1680 | (-1092) | | | | 6-5/8" | 1695 |
| Traverse Lime | 2000 | (-1412) | | | | 5-3/16" | 2702 |
| Dundee | 2688 | S.L.M. | (-2100) | | Small show oil (-215) 2740; 2808. (-2220) Water (2550 ft.) at 2919. (-2331) | | |
| Total Depth | | 3026 | (-2438) | | | | |

Remarks 1491' CTM equals 1483' SLM.

Signed Harry J. Gaspeny