



Western Michigan University
ScholarWorks at WMU

Legacy Scout Tickets from Pure Oil Company

8-20-2021

MGRRE_PureOilScoutTickets_Johnson-Bradley Estate_1_21017128300000

MGRRE

Western Michigan University

Follow this and additional works at: <https://scholarworks.wmich.edu/pure>



Part of the Geology Commons

WMU ScholarWorks Citation

MGRRE, "MGRRE_PureOilScoutTickets_Johnson-Bradley Estate_1_21017128300000" (2021). *Legacy Scout Tickets from Pure Oil Company*. 945.
<https://scholarworks.wmich.edu/pure/945>

This Document is brought to you for free and open access via ScholarWorks at WMU. It has been accepted for inclusion in Legacy Scout Tickets from Pure Oil Company by an authorized administrator of ScholarWorks at WMU. See the National Digital Catalogue - Science Base Catalogue for more collections submitted by MGRRE.



MGRRE_PureOilScoutTickets_Johnson-Bradley Estate_1_21017128300000

API 21017128300000

Permit Number 12830

Lease Name Johnson-Bradley Estate

Well Number 1

County Bay

Township 18N

Range 03E

Section 36

2021 DEQ or Pure co_name Lincoln Drilling Company

Pure Number 287

Latitude 43.91566

Longitude -84.06088

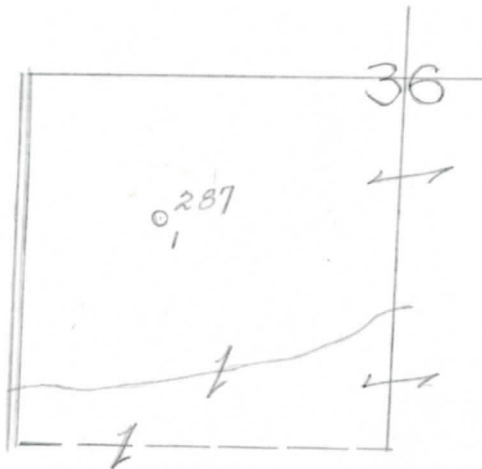
THE PURE OIL COMPANY LOCATION REPORT

Date December 11, 1946 A.F.E. No. Johnson-Bradley Estate
 Division Mich. Producing District _____ Lease Johnson-Bradley Est.
 Acres _____ Lease No. _____ Elevation _____ Well No. 1 (Serial No. 287)
 Quadrangle SE NW SW Sec. 36 Twp. 18 N Rge. 3 E ~~YORK~~ ~~YORK~~ Gibson
 Survey _____ County Bay State Michigan
 Operator Lincoln Drilling Co. Map Gibson Township, Bay County
Lincoln Drilling Company

Feet from North Line of Lease			
<u>330</u>	<u>330</u>	"	" East " " "
<u>330</u>	<u>330</u>	"	" South " " "
		"	" West " " "
Feet from North Line of Section			
<u>990</u>	<u>990</u>	"	" East " " "
		"	" South " " "
<u>990</u>	<u>990</u>	"	" West " " "

LEGEND

- Gas Well
- Oil Well
- Gas - Distillate Well
- Dry Hole
- Dry Showing Oil
- Location
- Dry Showing Gas
- Abandoned Location
- Abandoned Gas Well
- Abandoned Oil Well
- Input Well



Remarks: Dry hole - 3082' Scale _____

Submitted by CB Civil Engineer Approved by _____ Division Manager
 Approved by _____ Vice-President - General Manager