



Western Michigan University  
ScholarWorks at WMU

---

Legacy Scout Tickets from Pure Oil Company

---

8-20-2021

**MGRRE\_PureOilScoutTickets\_Brant\_2\_21021075160000**

MGRRE

*Western Michigan University*

Follow this and additional works at: <https://scholarworks.wmich.edu/pure>



Part of the Geology Commons

---

#### **WMU ScholarWorks Citation**

MGRRE, "MGRRE\_PureOilScoutTickets\_Brant\_2\_21021075160000" (2021). *Legacy Scout Tickets from Pure Oil Company*. 973.

<https://scholarworks.wmich.edu/pure/973>

This Document is brought to you for free and open access via ScholarWorks at WMU. It has been accepted for inclusion in Legacy Scout Tickets from Pure Oil Company by an authorized administrator of ScholarWorks at WMU. See the National Digital Catalogue - Science Base Catalogue for more collections submitted by MGRRE.



---

**MGRRE\_PureOilScoutTickets\_Brant\_2\_21021075160000**

API 21021075160000

Permit Number 7516

Lease Name Brant

Well Number 2

County Berrien

Township 03S

Range 17W

Section 17

2021 DEQ or Pure co\_name Clapsaddle and Harris

Pure Number 29

Latitude 42.21221

Longitude -86.31933

THE PURE OIL COMPANY

DATE April 10, 1940

LOCATION REPORT

No. 29

STATE Michigan COUNTY Berrien DIST. Coloma TWP. Coloma SEC. 17 TOWN 3 S RANGE 17 W

WELL No. 22 (SERIAL No. 29) FARM Brant ACRES

NAME OF STREAM OR WATERS QUADRANGLE SW NW NW

OPERATOR Clapsaddle and Harris Map Coloma Township, Berrien County

990 990 Feet from North Line of Farm

" " East " " "

" " South " " "

330 330 " " West " " "

990 990 Feet from North Line of Section

" " East " " "

" " South " " "

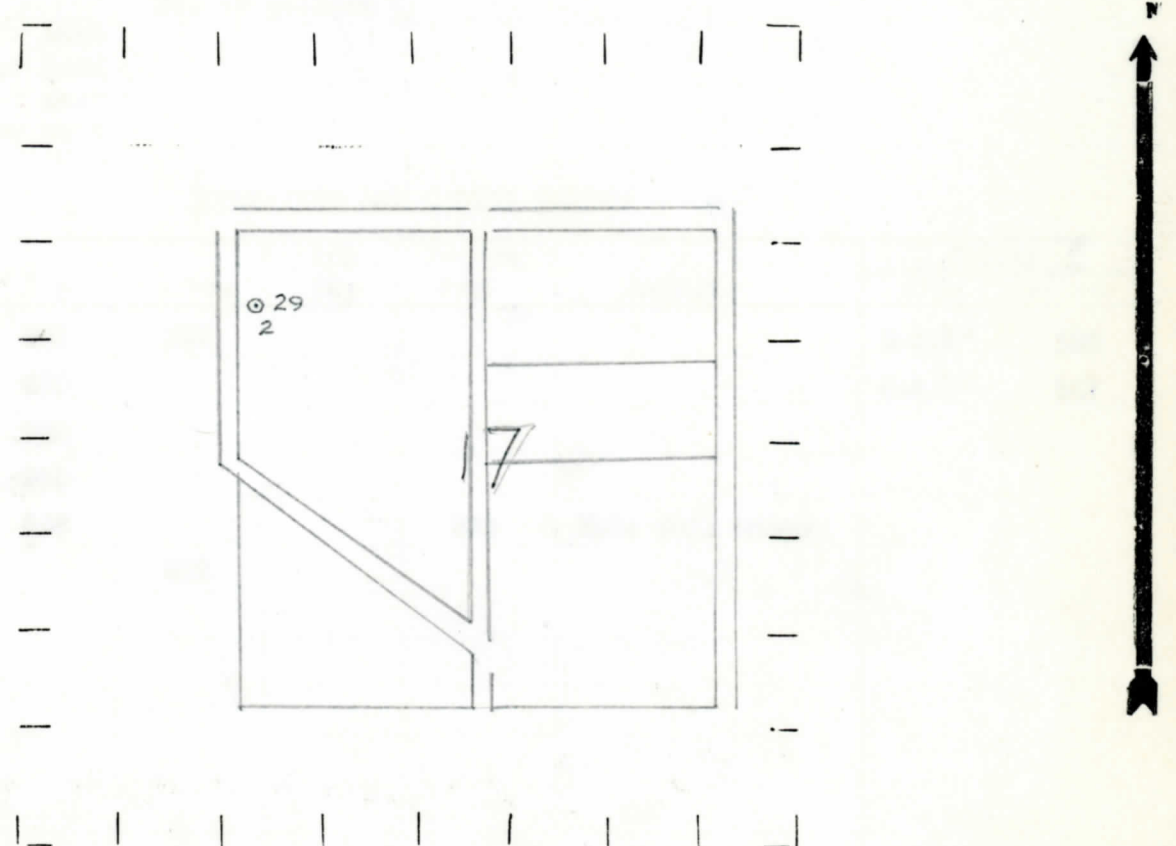
330 330 " " West " " "

*Handwritten notes:*  
225  
Sp 4-5-40  
8 5/8 180

LEGEND

- LOCATION
- ⊕ RIG
- ⊕ DRILLING
- ☀ GAS WELL
- OIL WELL
- ⬮ SMALL OIL WELL
- ⊖ DRY HOLE
- ⬮ DRY SHOWING OIL
- ⊖ DRY SHOWING GAS
- ⊖ ABANDONED LOCATION
- ☀ ABANDONED GAS WELL
- ⬮ ABANDONED OIL WELL

NOTE: Below make tracing from map. (when no map is obtainable make sketch) showing farm, center of section, this location with measurements and also wells, dry holes, or other locations in the vicinity of this location.



REMARKS:

SIGNED

*Handwritten signature*

Subintendent or Foreman.

The Pure Oil Company  
 COMPLETION RECORD OF WELLS DRILLED BY OTHER OPERATORS

Michigan Producing Division

Date **April 17, 1940** No. **29**  
 State **Mich.** County **Berrien** ~~Sixth~~ Twp. **Coloma** Sec. **17** Twp. **3 S** Rge. **17 W**  
 Well No. **2** (Serial No.) ~~(22222222)~~ **29** Farm **Brant** Acres \_\_\_\_\_  
 Operator **Clapsaddle and Harris** Information secured ~~from~~ <sup>By</sup> **Scouting Department**  
 Date well started **4-5-40** Dated well completed **4-14-40** Elevation **646.3**

PRODUCTION RECORD

1st 24 hours natural **Dry Hole**  
 2nd 24 hours natural \_\_\_\_\_  
 Date of shot \_\_\_\_\_ No. of quarts \_\_\_\_\_ From \_\_\_\_\_ to \_\_\_\_\_ From \_\_\_\_\_ to \_\_\_\_\_  
 Date of acid \_\_\_\_\_ No. of gallons \_\_\_\_\_  
 shot  
 1st 24 hours after acid \_\_\_\_\_  
 shot  
 2nd 24 hours after acid \_\_\_\_\_

FORMATION AND CASING RECORD

| Formation      | Top | Bottom | Top Pay | Bottom Pay | Remarks          | Casing |        |
|----------------|-----|--------|---------|------------|------------------|--------|--------|
|                |     |        |         |            |                  | Size   | Set at |
| Red Rock       | 302 | 309    |         |            |                  | 8-5/8" | 180    |
| Antrim (Light) | 630 |        |         |            |                  | 6-5/8" | 247    |
| Antrim (Dark)  | 738 |        |         |            |                  |        |        |
| Traverse Form. | 830 |        |         |            |                  |        |        |
| Traverse Lime  | 868 |        |         | 892        | Hole full water. |        |        |
| Total Depth    |     | 892    |         |            |                  |        |        |
|                |     |        |         |            |                  |        |        |
|                |     |        |         |            |                  |        |        |
|                |     |        |         |            |                  |        |        |
|                |     |        |         |            |                  |        |        |
|                |     |        |         |            |                  |        |        |
|                |     |        |         |            |                  |        |        |
|                |     |        |         |            |                  |        |        |
|                |     |        |         |            |                  |        |        |
|                |     |        |         |            |                  |        |        |
|                |     |        |         |            |                  |        |        |
|                |     |        |         |            |                  |        |        |

Remarks \_\_\_\_\_  
 \_\_\_\_\_  
 \_\_\_\_\_  
 \_\_\_\_\_  
 \_\_\_\_\_

Signed **D. C. Shackelford**