



Western Michigan University
ScholarWorks at WMU

Legacy Scout Tickets from Pure Oil Company

8-20-2021

**MGRRE_PureOilScoutTickets_Lybrook,
Henley_1_21021076020000**

MGRRE
Western Michigan University

Follow this and additional works at: <https://scholarworks.wmich.edu/pure>



Part of the Geology Commons

WMU ScholarWorks Citation

MGRRE, "MGRRE_PureOilScoutTickets_Lybrook, Henley_1_21021076020000" (2021). *Legacy Scout Tickets from Pure Oil Company*. 974.

<https://scholarworks.wmich.edu/pure/974>

This Document is brought to you for free and open access via ScholarWorks at WMU. It has been accepted for inclusion in Legacy Scout Tickets from Pure Oil Company by an authorized administrator of ScholarWorks at WMU. See the National Digital Catalogue - Science Base Catalogue for more collections submitted by MGRRE.



MGRRE_PureOilScoutTickets_Lybrook, Henley_1_21021076020000

API 21021076020000

Permit Number 7602

Lease Name Lybrook, Henley

Well Number 1

County Berrien

Township 06S

Range 17W

Section 30

2021 DEQ or Pure co_name Michi Cal Oil Company

Pure Number 30

Latitude 41.91489

Longitude -86.32627

DATE May 1, 1940

LOCATION REPORT

No. 30

STATE Michigan COUNTY Berrien DIST. Berrien TWP. Berrien SEC. 30 TOWN 6 S S RANGE 17 W
WELL No. 1 (SERIAL No. 30) FARM Henley Lybrook ACRES

NAME OF STREAM OR WATERS _____ QUADRANGLE SE SW SE

OPERATOR Michi-Cal Oil Company Map Berrien Township, Berrien County
Michi-Cal Oil Co Berrien - Berrien

_____ Feet from North Line of Farm

_____ " " East " " "

330 330 " " South " " "

330 330 " " West " " "

_____ Feet from North Line of Section

_____ " " East " " "

330 330 " " South " 1/4 "

990 990 " " West " " "

3 - m

LEGEND

○ LOCATION

⊕ RIG

⊕ DRILLING

☼ GAS WELL

● OIL WELL

● SMALL OIL WELL

⊙ DRY HOLE

◆ DRY SHOWING OIL

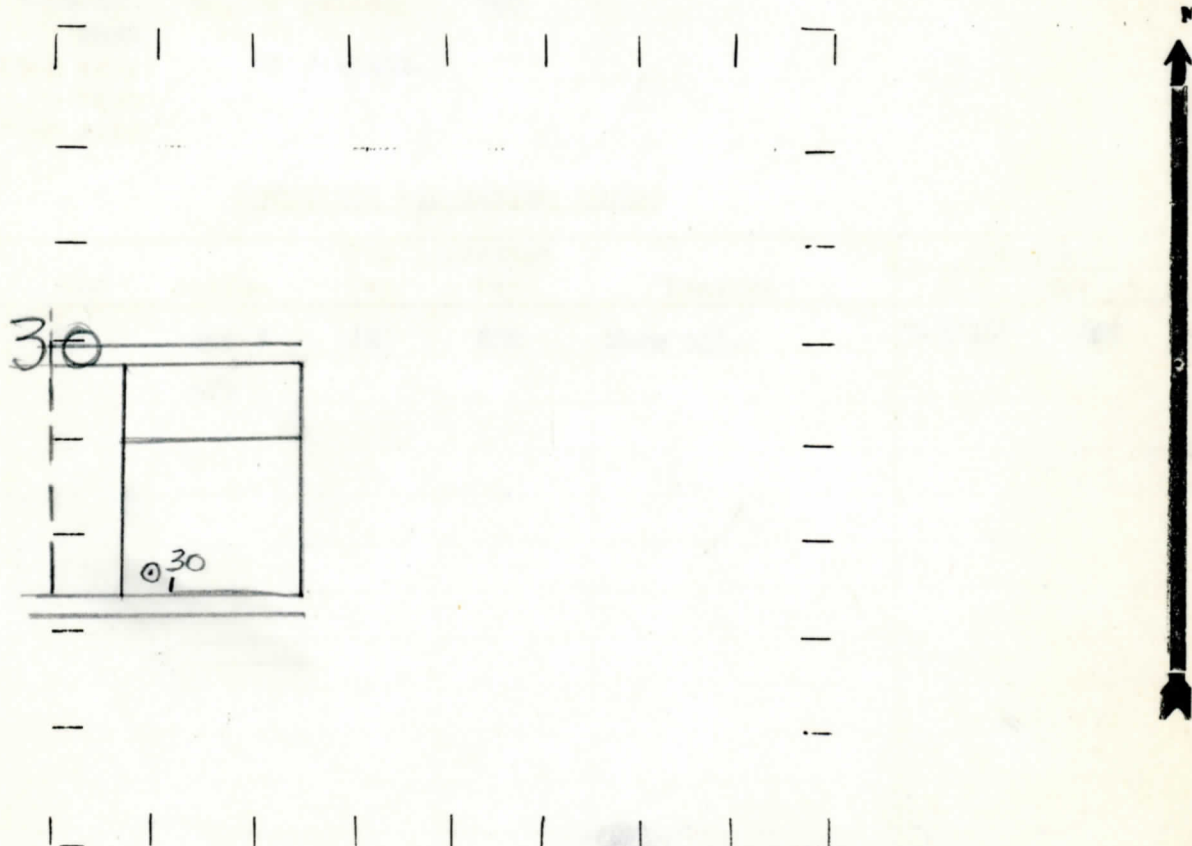
⊙ DRY SHOWING GAS

⊙ ABANDONED LOCATION

☼ ABANDONED GAS WELL

● ABANDONED OIL WELL

NOTE: Below make tracing from map, (when no map is obtainable make sketch) showing farm, center of section, this location with measurements and also wells, dry holes, or other locations in the vicinity of this location.



REMARKS:

SIGNED

LV

Superintendent or Foreman.

Michigan Producing Division

Date August 21, 1940 No. 30
State Mich. County Berrien ~~Rock~~ Twp. Berrien Sec. 30 Twp. 6 S Rge. 17 W
(Serial No.)
Well No. 1 (~~Rockyook~~) 30 Farm Henley Lybrook Acres
Operator Michi-Cal Oil Company Information secured ~~Rock~~ By Scouting Department
Date well started 5-7-40 Dated well completed 7-9-40 Elevation 778.8

PRODUCTION RECORD

1st 24 hours natural Dry Hole
2nd 24 hours natural
Date of shot No. of quarts From to From to
Date of acid 7-10-40 No. of gallons 500
1st 24 hours after acid ~~shot~~ No results.
2nd 24 hours after acid

FORMATION AND CASING RECORD

Formation	Top	Bottom	Top Pay	Bottom Pay	Remarks	Casing	
						Size	Set at
Traverse Line	670	688 ?	687	688	Show oil.	5-3/16"	689
Total Depth		696					

Remarks

Signed D. C. Shackelford