



Western Michigan University
ScholarWorks at WMU

Legacy Scout Tickets from Pure Oil Company

8-20-2021

**MGRRE_PureOilScoutTickets_Little, Waters
M._1_21021080540000**

MGRRE
Western Michigan University

Follow this and additional works at: <https://scholarworks.wmich.edu/pure>



Part of the Geology Commons

WMU ScholarWorks Citation

MGRRE, "MGRRE_PureOilScoutTickets_Little, Waters M._1_21021080540000" (2021). *Legacy Scout Tickets from Pure Oil Company*. 980.
<https://scholarworks.wmich.edu/pure/980>

This Document is brought to you for free and open access via ScholarWorks at WMU. It has been accepted for inclusion in Legacy Scout Tickets from Pure Oil Company by an authorized administrator of ScholarWorks at WMU. See the National Digital Catalogue - Science Base Catalogue for more collections submitted by MGRRE.



MGRRE_PureOilScoutTickets_Little, Waters M._1_21021080540000

API 21021080540000

Permit Number 8054

Lease Name Little, Waters M.

Well Number 1

County Berrien

Township 06S

Range 17W

Section 9

2021 DEQ or Pure co_name Matteson, D. A.

Pure Number 36

Latitude 41.96085

Longitude -86.29432

DATE September 25, 1940

LOCATION RECORD OF LOCATION REPORT OTHER OPERATORS

No. 36

STATE Michigan COUNTY Berrien TWP Berrien SEC 9 TOWN 65 RANGE 17 W
WELL No. 1 (SERIAL No. 36) FARM Waters M. Little ACRES

NAME OF STREAM OR WATERS _____ QUADRANGLE SW NE SW

OPERATOR D. A. Matteson Map Berrien Township, Berrien County

Feet from North Line of Farm

480 480 " " East " " "

450 450 " " South " " "

1288 1288 " " West 1/4 " " "

Feet from North Line of Section

914 914 " " East " " "

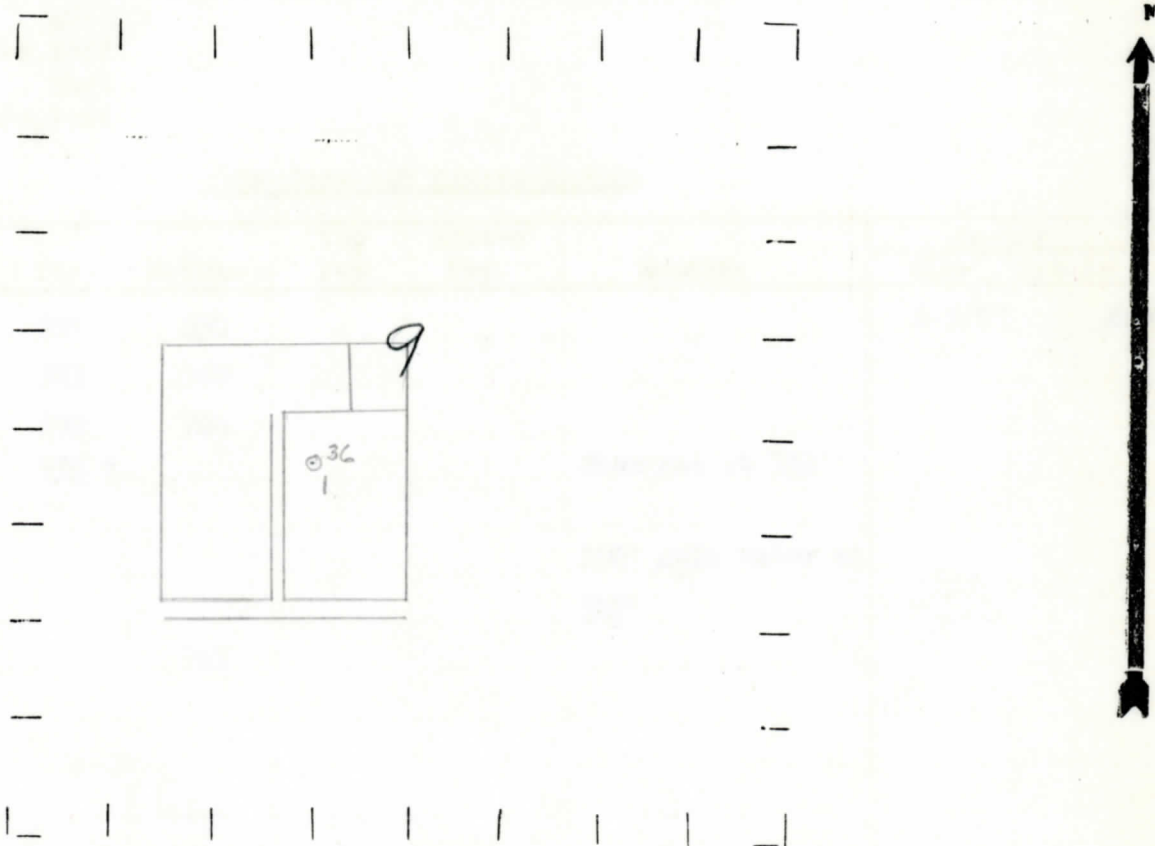
" " South " " "

" " West " " "

LEGEND

- LOCATION
- ⊕ RIG
- ⊕ DRILLING
- ☀ GAS WELL
- OIL WELL
- SMALL OIL WELL
- ⊙ DRY HOLE
- DRY SHOWING OIL
- ⊙ DRY SHOWING GAS
- ⊙ ABANDONED LOCATION
- ☀ ABANDONED GAS WELL
- ABANDONED OIL WELL

NOTE: Below make tracing from map. (when no map is obtainable make sketch) showing farm, center of section, this location with measurements and also wells, dry holes, or other locations in the vicinity of this location.



REMARKS:

SIGNED

w
Subintendent or Foreman.

Michigan Division

Date November 6, 1940 No. 36
 State Mich County Berrien Dist. Berrien Twp. Berrien Sec. 9 Twp. 6 S Rge. 17 W
 Well No. 1 (Serial No.) 36 Farm Waters M. Little Acres _____
 Operator D. A. Matteson Information secured ~~from~~ By Scouting Department
 Date well started 9-23-40 Dated well completed 10-23-40 Elevation 750.2

PRODUCTION RECORD

1st 24 hours natural Dry hole
 2nd 24 hours natural _____
 Date of shot _____ No. of quarts _____ From _____ to _____ From _____ to _____
 Date of acid _____ No. of gallons _____
 1st 24 hours after acid shot _____
 2nd 24 hours after acid shot _____

FORMATION AND CASING RECORD

Formation	Top	Bottom	Top Pay	Bottom Pay	Remarks	Casing	
						Size	Set at
Coldwater Red Rock	229	230				8-5/8"	240'
Antrim (Light)	523	560					
Antrim (Dark)	560	704					
Traverse Lime	733 ?				Show gas at 733'		
					100' salt water at 747'		
Total depth		747					

Remarks _____

Signed Frank Shackelford