



Western Michigan University
ScholarWorks at WMU

Legacy Scout Tickets from Pure Oil Company

8-20-2021

MGRRE_PureOilScoutTickets_Stafford, C. B._1_21021080650000

MGRRE

Western Michigan University

Follow this and additional works at: <https://scholarworks.wmich.edu/pure>



Part of the Geology Commons

WMU ScholarWorks Citation

MGRRE, "MGRRE_PureOilScoutTickets_Stafford, C. B._1_21021080650000" (2021). *Legacy Scout Tickets from Pure Oil Company*. 981.

<https://scholarworks.wmich.edu/pure/981>

This Document is brought to you for free and open access via ScholarWorks at WMU. It has been accepted for inclusion in Legacy Scout Tickets from Pure Oil Company by an authorized administrator of ScholarWorks at WMU. See the National Digital Catalogue - Science Base Catalogue for more collections submitted by MGRRE.



MGRRE_PureOilScoutTickets_Stafford, C. B._1_21021080650000

API 21021080650000

Permit Number 8065

Lease Name Stafford, C. B.

Well Number 1

County Berrien

Township 07S

Range 17W

Section 1

2021 DEQ or Pure co_name Lawrence, L. W.

Pure Number 37

Latitude 41.8911

Longitude -86.23452

DATE October 2, 1940

LOCATION REPORT

No. 37

STATE Michigan COUNTY Berrien DEPT. TWP. Niles SEC. 1 TOWN. 7thS RANGE 17thW
WELL No. 1 (SERIAL No. 337) FARM C. B. Stafford ACRES

NAME OF STREAM OR WATERS _____ QUADRANGLE NE NE SW

OPERATOR L. W. Lawrence Map Niles Township, Berrien County

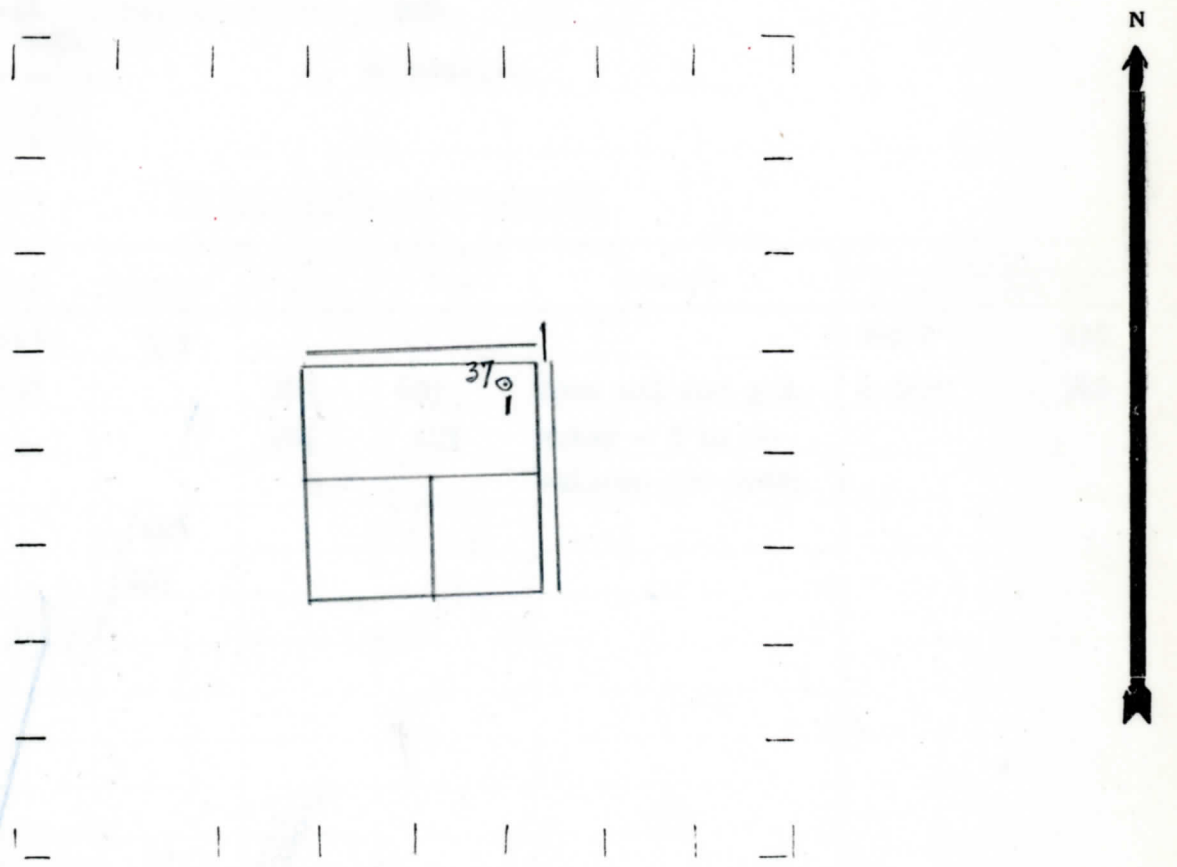
330 330 L. W. Lawrence
Feet from North Line of Farm
330 330 " " East " " "
" " South " " "
" " West " " "
330 330 Feet from North Line of 1/4th Section
330 330 " " East " " "
" " South " " "
" " West " " "

*received
sp 9-27-40*

LEGEND

- LOCATION
- ⊕ RIG
- ⊕ DRILLING
- ☀ GAS WELL
- OIL WELL
- SMALL OIL WELL
- ⊖ DRY HOLE
- ◆ DRY SHOWING OIL
- ⊖ DRY SHOWING GAS
- ⊖ ABANDONED LOCATION
- ☀ ABANDONED GAS WELL
- ABANDONED OIL WELL

NOTE: Below make tracing from map, (when no map is obtainable make sketch) showing farm, center of section, this location with measurements and also wells, dry holes, or other locations in the vicinity of this location.



REMARKS:

SIGNED w
Superintendent or Foreman.

Michigan Producing Division

Date **December 17, 1941** No. **37**
 State **Mich.** County **Berrien** Dist. **Miles** Sec. **1** Twp. **7 S** Rce. **17 W**
 Well No. **1** (Serial No. **37**) (County No. **37**) Farm **C. B. Stafford** Acres _____
 Operator **L. W. Lawrence** Information secured ^{By} ~~from~~ **Scouting Department**
 Date well started **10-16-40** Date well completed **8-17-41** Elevation **709.7**

PRODUCTION RECORD

1st 24 hours natural **Temporarily abandoned.**
 2nd 24 hours natural _____
 Date of shot _____ No. of quarts _____ From _____ to _____ From _____ to _____
 Date of acid **9-6-41** No. of gallons **500**
 1st 24 hours after acid ^{shot} **No results.**
 2nd 24 hours after acid _{shot} _____

FORMATION AND CASING RECORD

Formation	Top	Bottom	Top Pay	Bottom Pay	Remarks	Casing	
						Size	Set at
Antrim	445	545				8-5/8"	253
Traverse Line	591		602	603	Show oil and gas.	6-5/8"	560
			603	623	Water - 5 to 6-		
					bailers per hour.		
Total Depth		623					
Plugged back:		603					

Remarks _____

Signed **D. C. Shackelford**