



Western Michigan University
ScholarWorks at WMU

Legacy Scout Tickets from Pure Oil Company

8-20-2021

MGRRE_PureOilScoutTickets_City of St. Johns_3_unk

MGRRE

Western Michigan University

Follow this and additional works at: <https://scholarworks.wmich.edu/pure>



Part of the Geology Commons

WMU ScholarWorks Citation

MGRRE, "MGRRE_PureOilScoutTickets_City of St. Johns_3_unk" (2021). *Legacy Scout Tickets from Pure Oil Company*. 985.

<https://scholarworks.wmich.edu/pure/985>

This Document is brought to you for free and open access via ScholarWorks at WMU. It has been accepted for inclusion in Legacy Scout Tickets from Pure Oil Company by an authorized administrator of ScholarWorks at WMU. See the National Digital Catalogue - Science Base Catalogue for more collections submitted by MGRRE.



MGRRE_PureOilScoutTickets_City of St. Johns_3_unk

API unk

Permit Number unk

Lease Name City of St. Johns

Well Number 3

County Clinton

Township 7N

Range 2W

Section 9

2021 DEQ or Pure co_name Electric Light and Water Works

Pure Number 1

Latitude 43.0087227

Longitude -84.552756

THE PURE OIL COMPANY

DATE July 20, 1934

LOCATION REPORT COMPLETION

No. 1

STATE Michigan COUNTY Clinton DIST. Bingham TWP. Bingham SEC. #9 TOWN 7N RANGE 2W

WELL No. 3 (SERIAL No. 1) FARM City of St. Johns ACRES

NAME OF STREAM OR WATERS QUADRANGLE NW-NW-SW

OPERATOR Electric Light & Water Works MAP Bingham Township, Clinton County

Feet from North Line of Farm

East " " "

South " " "

West " " "

Feet from North Line of Section

East " " "

South " " "

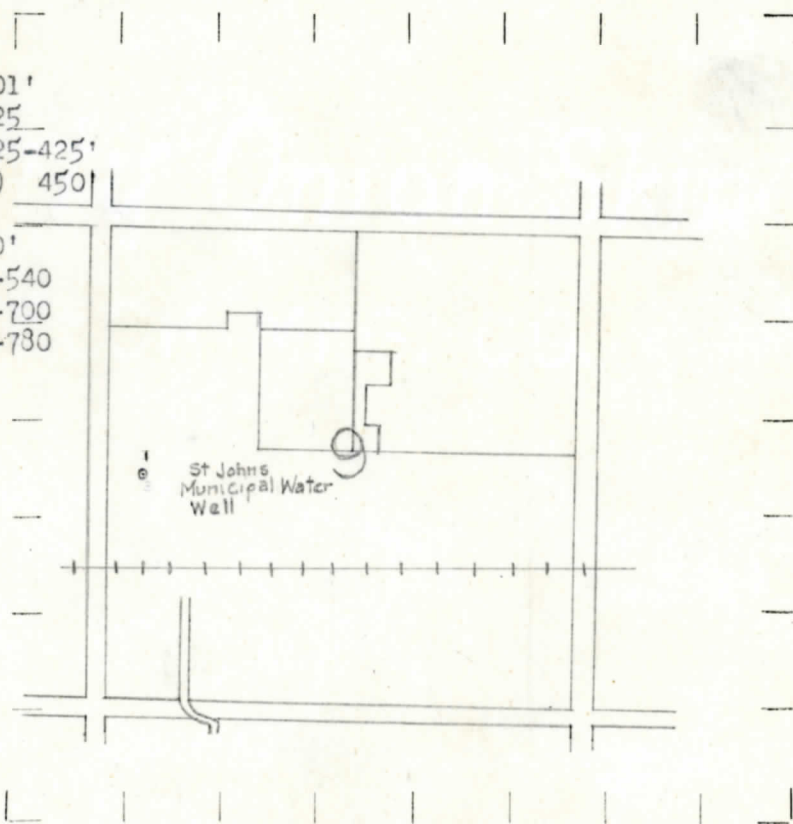
West " " "

LEGEND

- O LOCATION
- ① RIG
- ⊕ DRILLING
- ⊛ GAS WELL
- OIL WELL
- ⬮ SMALL OIL WELL
- ⊛ DRY HOLE
- ⊛ DRY SHOWING OIL
- ⊛ DRY SHOWING GAS
- ⊛ ABANDONED LOCATION
- ⊛ ABANDONED GAS WELL
- ⊛ ABANDONED OIL WELL

NOTE: Below make tracing from map, (when no map is obtainable make sketch) showing farm, center of section, this location with measurements and also wells, dry holes, or other locations in the vicinity of this location. Make copy to keep for reference and send original to Columbus office.

Elevation 753'
 Pleistocene 0-151'
 Penn-Sag. Form. 151-301'
 Sandstone 301-325'
 Fine Wht. Sandstone 325-425'
 Wht. Sandstone (Water) 450'
 Miss. (Bayport)
 Gr. Limestone 450-520'
 Gr. Wht. Sandstone 520-540'
 Mich. Formation 540-700'
 Napoleon 700-780'
 (Water)



Elev. 753.
 Pleistocene - 0-151'
 Penn. Sag. Form. 151-301'
 Sandstone - 301-325'
 Lime White SS 325-425'
 White SS (Water) - 450'
 Miss. (Bayport)
 Gr. Ls. - 450-520'
 Gr. White SS. 520-540'
 Mich. Form. - 540-700'
 Napoleon - 700-780'
 WATER

REMARKS:

SIGNED

R. L. Yeager
 Superintendent or Foreman.