



Western Michigan University
ScholarWorks at WMU

Legacy Scout Tickets from Pure Oil Company

8-20-2021

MGRRE_PureOilScoutTickets_City of St. Johns_unk_unk

MGRRE

Western Michigan University

Follow this and additional works at: <https://scholarworks.wmich.edu/pure>



Part of the Geology Commons

WMU ScholarWorks Citation

MGRRE, "MGRRE_PureOilScoutTickets_City of St. Johns_unk_unk" (2021). *Legacy Scout Tickets from Pure Oil Company*. 987.

<https://scholarworks.wmich.edu/pure/987>

This Document is brought to you for free and open access via ScholarWorks at WMU. It has been accepted for inclusion in Legacy Scout Tickets from Pure Oil Company by an authorized administrator of ScholarWorks at WMU. See the National Digital Catalogue - Science Base Catalogue for more collections submitted by MGRRE.



MGRRE_PureOilScoutTickets_City of St. Johns_unk_unk

API unk

Permit Number unk

Lease Name City of St. Johns

Well Number unk

County Clinton

Township 7N

Range 2W

Section 11

2021 DEQ or Pure co_name Electric Light and Water Works

Pure Number 3

Latitude 43.0086383

Longitude -84.5134714

July 2-34

THE PURE OIL COMPANY

LOCATION REPORT *Completion*

No. 3

DATE July 2, 1934

STATE *Mich* Michigan COUNTY *Clinton* Clinton DIST. *Bingham* Bingham TWP. *Bingham* Bingham SEC. *9* 9 TOWN *7N* 7N RANGE *2W* 2W

WELL No. _____ (SERIAL No. *3* 3) FARM _____ City of St. Johns _____ ACRES _____

NAME OF STREAM OR WATERS _____ QUADRANGLE *NW-NW-SW* NW-NW-SW

OPERATOR *Elec Light & Water Works* Electric Light & Water Works MAP *Bingham Township, Clinton County* Bingham Twp - Clinton Co.

Feet from North Line of Farm

_____ " " East " " "

_____ " " South " " "

_____ " " West " " "

Feet from North Line of Section

_____ " " East " " "

2300 *2300* _____ " " South " " "

700 *700* _____ " " West " " "

LEGEND

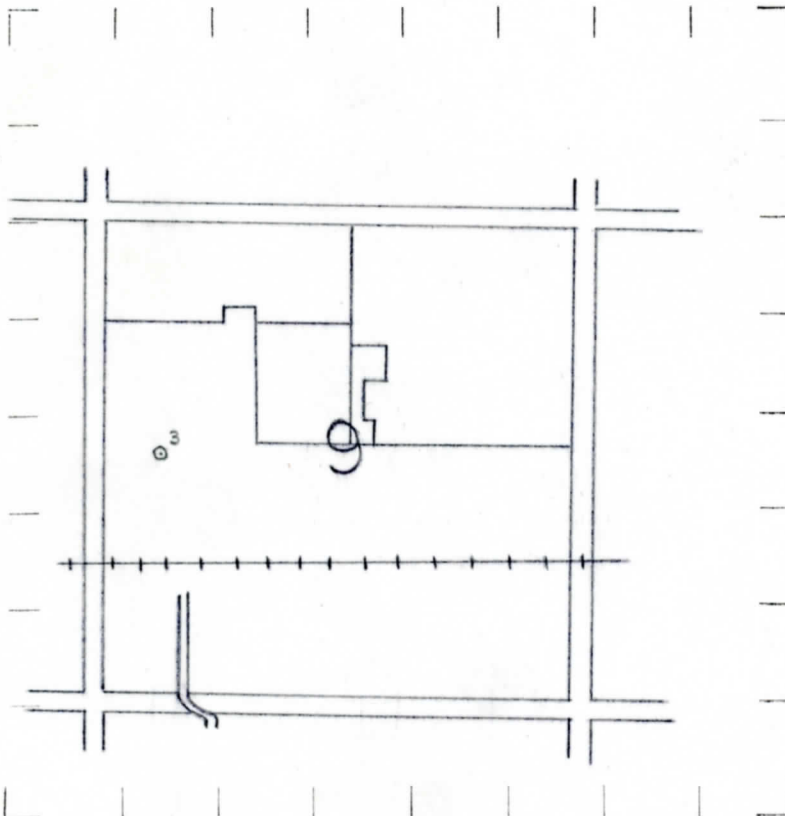
- LOCATION
- ① RIG
- ⊕ DRILLING
- ⊙ GAS WELL
- OIL WELL
- ⊕ SMALL OIL WELL
- ◇ DRY HOLE
- ◆ DRY SHOWING OIL
- ⊙ DRY SHOWING GAS
- ⊖ ABANDONED LOCATION
- ⊙ ABANDONED GAS WELL
- ⊖ ABANDONED OIL WELL

NOTE: Below make tracing from map, (when no map is obtainable make sketch) showing farm, center of section, this location with measurements and also wells, dry holes, or other locations in the vicinity of this location. Make copy to keep for reference and send original to Columbus office.

Elev. 753'

Elevation 753'

Never reached Marshall



Never reached Marshall.

REMARKS:

SIGNED

R. H. Ferguson
 Superintendent or Foreman.