



Western Michigan University  
ScholarWorks at WMU

---

Legacy Scout Tickets from Pure Oil Company

---

8-20-2021

**MGRRE\_PureOilScoutTickets\_CURTIS\_1\_21037011910000**

MGRRE

*Western Michigan University*

Follow this and additional works at: <https://scholarworks.wmich.edu/pure>



Part of the Geology Commons

---

#### **WMU ScholarWorks Citation**

MGRRE, "MGRRE\_PureOilScoutTickets\_CURTIS\_1\_21037011910000" (2021). *Legacy Scout Tickets from Pure Oil Company*. 988.

<https://scholarworks.wmich.edu/pure/988>

This Document is brought to you for free and open access via ScholarWorks at WMU. It has been accepted for inclusion in Legacy Scout Tickets from Pure Oil Company by an authorized administrator of ScholarWorks at WMU. See the National Digital Catalogue - Science Base Catalogue for more collections submitted by MGRRE.



---

**MGRRE\_PureOilScoutTickets\_CURTIS\_1\_21037011910000**

API 21037011910000

Permit Number 1191

Lease Name CURTIS

Well Number 1

County Clinton

Township 8N

Range 1W

Section 12

2021 DEQ or Pure co\_name CASTER WILLIAM E

Pure Number 4

Latitude 43.10185

Longitude -84.38601

THE PURE OIL COMPANY

DATE **August 28, 1931.**

LOCATION REPORT

No. - 4 -

STATE **Michigan** COUNTY **Clinton** DIST. **Duplain** TWP. **Duplain** SEC. **12** TOWN **8 N** RANGE **1 W**

WELL No. **1** (SERIAL No. **4**) FARM **Julia Curtis** PREC. **80** ACRES

NAME OF STREAM OR WATERS \_\_\_\_\_ QUADRANGLE **W<sup>1</sup>/<sub>2</sub> - NW<sup>1</sup>/<sub>4</sub>**

OPERATOR **Wm. E. Caster** MAP \_\_\_\_\_

**475** Feet from North Line of Farm

“ “ East “ “ “

“ “ South “ “ “

**375** “ “ West “ “ “

**475** Feet from North Line of Section

“ “ East “ “ “

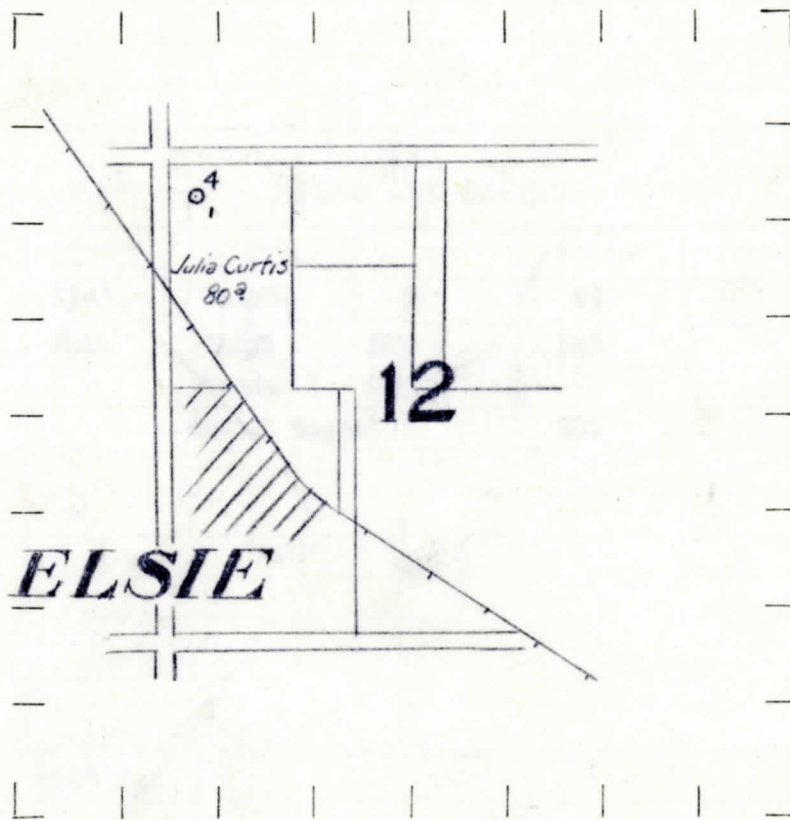
“ “ South “ “ “

**375** “ “ West “ “ “

**LEGEND**

- LOCATION
- ⊕ RIG
- ⊕ DRILLING
- ⊗ GAS WELL
- OIL WELL
- ⬮ SMALL OIL WELL
- ⊕ DRY HOLE
- ⬮ DRY SHOWING OIL
- ⊗ DRY SHOWING GAS
- ⊕ ABANDONED LOCATION
- ⊗ ABANDONED GAS WELL
- ⬮ ABANDONED OIL WELL

NOTE: Below make tracing from map, (when no map is obtainable make sketch) showing farm, center of section, this location with measurements and also wells, dry holes, or other locations in the vicinity of this location. Make copy to keep for reference and send original to Columbus office.



REMARKS:

\_\_\_\_\_  
 \_\_\_\_\_  
 \_\_\_\_\_

SIGNED

\_\_\_\_\_  
 Superintendent or Foreman.

DATE 9-25-31

THE PURE OIL COMPANY

No. - 4 -

Michigan Producing DIVISION COMPLETION RECORD

DATE 9-25-31

STATE Michigan

COUNTY Clinton

DIST. Duplain TWP. PREC.

SEC. 12

TOWN 8-N RANGE 1-W

WELL No. 1 (SERIAL No. 4) FARM

Julia Curtis

ACRES

NAME OF STREAM OR WATERS

QUADRANGLE W 1/2 - NW 1/4

OPERATOR Wm. E. Caster

MAP Duplain Twp. Clinton County

LOCATION REPORT SENT IN (DATE) 8-29-31

WELL STARTED (DATE) 8-29-31

WELL COMPLETED (DATE) 9-19-31

~~DRY HOLE~~  
OIL WELL

~~DRY HOLE~~

DRY HOLE

~~DRY HOLE~~

CROSS OUT THREE OF THE ABOVE WELL RECORD

DATE OF SHOT

NUMBER OF QUARTS

1st 24 HOURS PRODUCTION	Dry Hole	BARRELS OR FEET
2nd " " "		" " "
3rd " " "		" " "
4th " " "		" " "
5th " " "		" " "

SAND AND CASING

CASING SIZE	WEIGHT	CASING Feet Inches	SAND Name and Nature	TOP	BOTTOM	TOP PAY	BOTTOM PAY	SALT WATER
6-5/8"		114'	Drift	0	91			
4"		430	Sand	520	565			520 H F
			Marshall	655				670
			Total Depth		670			

REMARKS Show oil 670' ?

NOTE:—MAKE COPY TO KEEP FOR REFERENCE AND SEND ORIGINAL TO CHICAGO OFFICE. LIST MATERIAL CHARGEABLE TO WELL ON OTHER SIDE.

SIGNED G.H.B. ell

SUPT. OR FOREMAN