



Western Michigan University  
ScholarWorks at WMU

---

Legacy Scout Tickets from Pure Oil Company

---

8-20-2021

**MGRRE\_PureOilScoutTickets\_SCOTT\_1\_21037027320000**

MGRRE

*Western Michigan University*

Follow this and additional works at: <https://scholarworks.wmich.edu/pure>



Part of the Geology Commons

---

#### **WMU ScholarWorks Citation**

MGRRE, "MGRRE\_PureOilScoutTickets\_SCOTT\_1\_21037027320000" (2021). *Legacy Scout Tickets from Pure Oil Company*. 991.

<https://scholarworks.wmich.edu/pure/991>

This Document is brought to you for free and open access via ScholarWorks at WMU. It has been accepted for inclusion in Legacy Scout Tickets from Pure Oil Company by an authorized administrator of ScholarWorks at WMU. See the National Digital Catalogue - Science Base Catalogue for more collections submitted by MGRRE.



---

**MGRRE\_PureOilScoutTickets\_SCOTT\_1\_21037027320000**

API 21037027320000

Permit Number 2732

Lease Name SCOTT

Well Number 1

County Clinton

Township 8N

Range 2W

Section 22

2021 DEQ or Pure co\_name MARTIN JOHN F INC

Pure Number 7

Latitude 43.0736

Longitude -84.5425

THE PURE OIL COMPANY

DATE 9-12-35

LOCATION REPORT

No. 7

STATE Michigan COUNTY Clinton DIST. Greenbush TWP. Greenbush SEC. 22 TOWN 8-N RANGE 2-W

WELL No. 1 (SERIAL No. 7) FARM Mildred C. Scott ACRES

NAME OF STREAM OR WATERS QUADRANGLE NW - NW - NW

OPERATOR J. F. Martin Map Greenbush - Clinton

330 330 Feet from North Line of Farm

East " " "

South " " "

330 330 West " " "

330 330 Feet from North Line of Section

East " " "

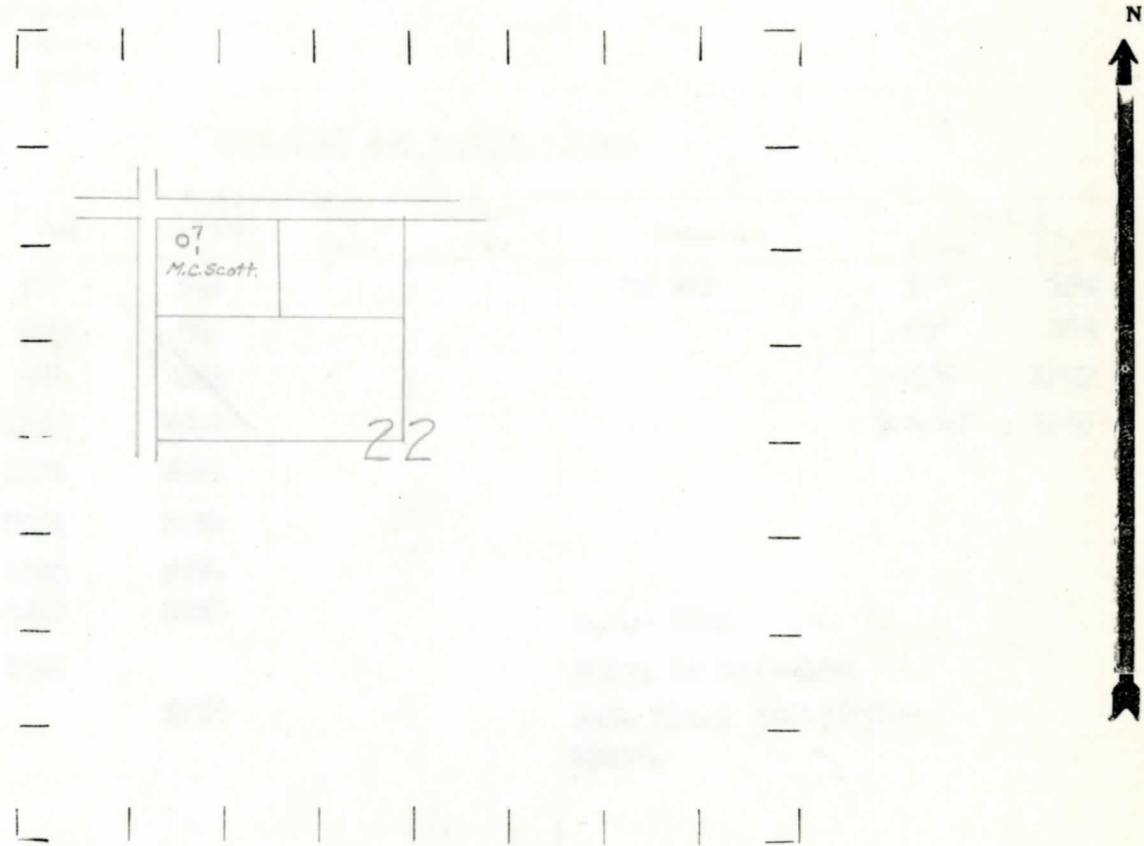
South " " "

330 330 West " " "

LEGEND

- O LOCATION
@ RIG
+ DRILLING
\* GAS WELL
● OIL WELL
● SMALL OIL WELL
⊖ DRY HOLE
◆ DRY SHOWING OIL
⊖ DRY SHOWING GAS
⊖ ABANDONED LOCATION
\* ABANDONED GAS WELL
● ABANDONED OIL WELL

NOTE: Below make tracing from map, (when no map is obtainable make sketch) showing farm, center of section, this location with measurements and also wells, dry holes, or other locations in the vicinity of this location.



REMARKS:

SIGNED R.L. Young Superintendent or Foreman.

COMPLETION RECORD OF WELLS DRILLED BY OTHER OPERATORS

Michigan Producing Division

Date 11-20-35 No. 7  
 State Mich. County Clinton Dist. Greenbush Twp. SW Rge. 2 W  
 Well No. 1 (Serial No.) (County No.) 7 Farm Mildred C. Scott Acres  
 Operator John F. Martin, Inc. Information secured from Scouting Dept. by  
 Date well started 10-4-35 Date well completed 11-15-35 Elevation 735

PRODUCTION RECORD

1st 24 hours natural Dry Hole  
 2nd 24 hours natural  
 Date of shot No. of quarts From to From to  
 Date of acid No. of gallons  
 1st 24 hours after acid shot  
 2nd 24 hours after acid shot

FORMATION AND CASING RECORD

Formation	Top	Bottom	Top Pay	Bottom Pay	Remarks	Casing	
						Size	Set at
Stray	700	745			SW 705	10"	164
Marshall	765	863				8"	554
Red Rock	863	996				6-5/8"	1012
" "	1996	2015				5-3/16"	2863
Sunbury	2023	2041					
Berea	2041	2063					
Antrim	2095	2433					
Traverse	2433	2785			S.W.- 2583		
Dundee	2355				White SW 2895-2899		
Total Depth		2923			H.F. Black Water 2920-2923'		

Remarks

Signed J.A. Bell